

REMARKS :) * ----- REFER TO COVER PAGE

** ----- X.XX = 2.54 (FOR PIN LENGTH \geq 3.20 & \leq 10.00mm.)
 ** ----- X.XX = 1.75 (FOR PIN LENGTH $>$ 10.00 & \leq 19.50mm.)

VARITRONIX LTD.

Dimension : mm

TOL : \pm 0.15 IF NOT SPECIFY

DO NOT SCALE DRAWING

3rd ANGLE PROJECTION

Drawn by : YAN

Date : 98/10/23

Checked by :

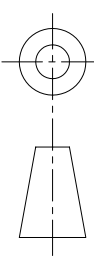
Date :

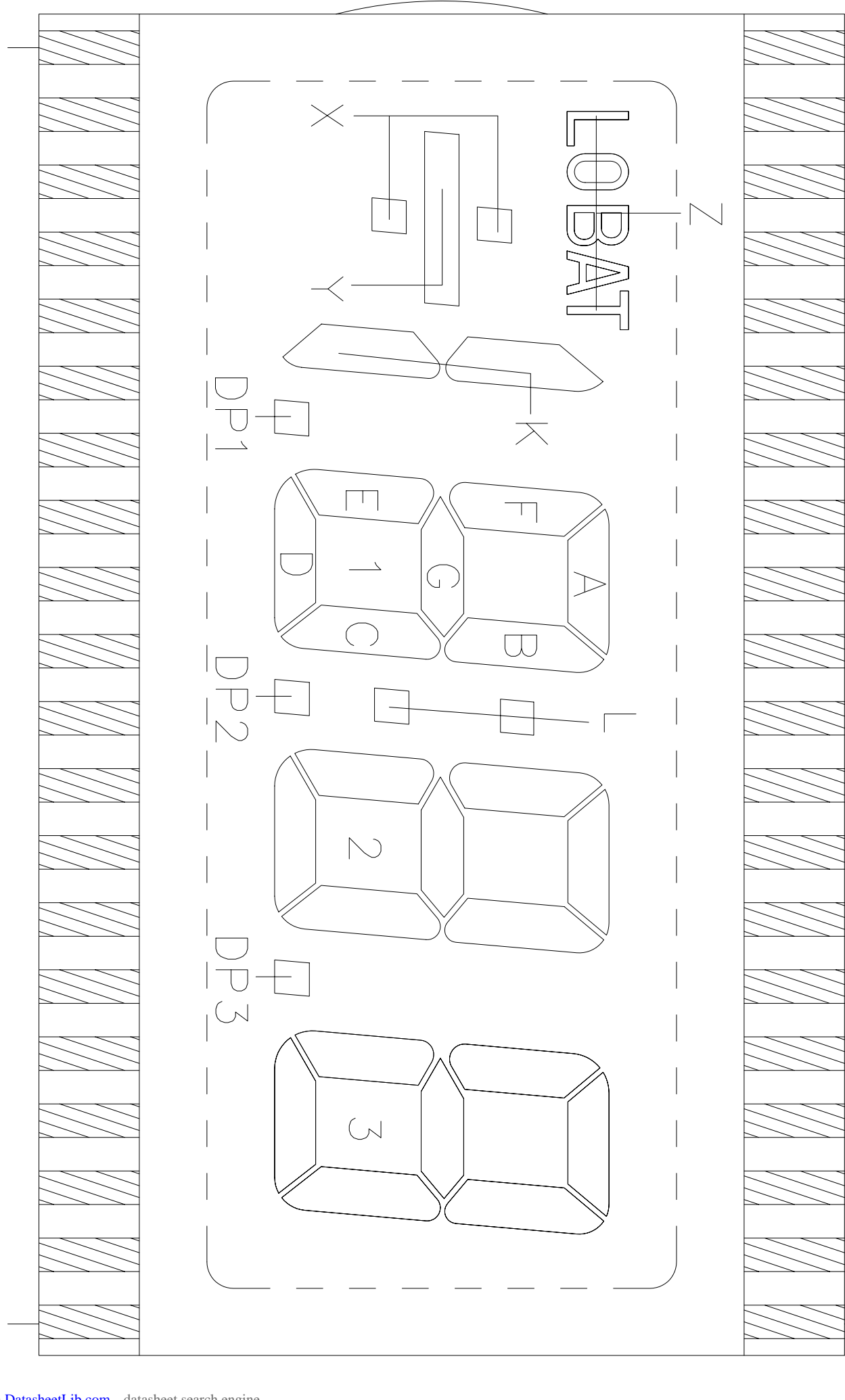
DWG. NO. :

VI-302-10

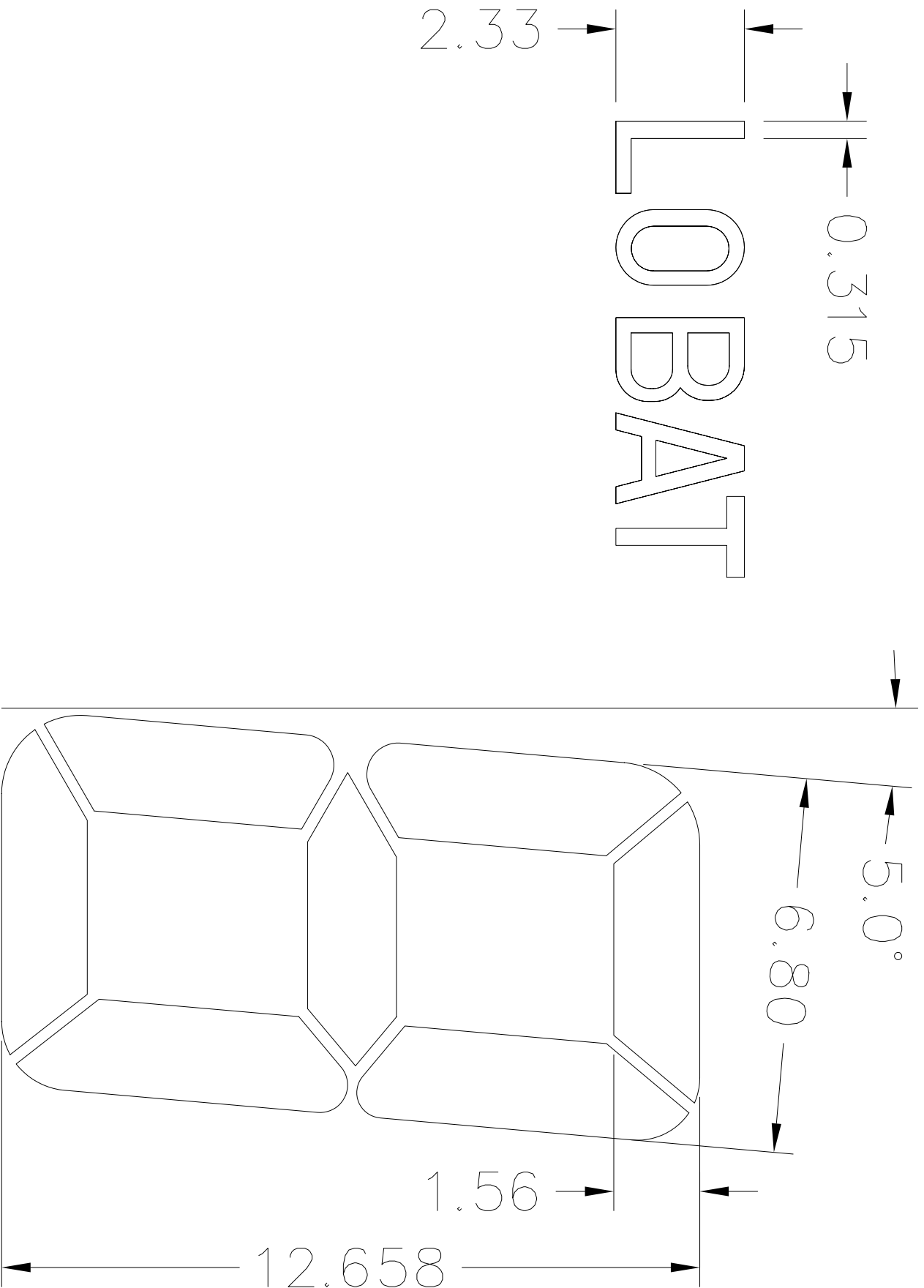
REV

10

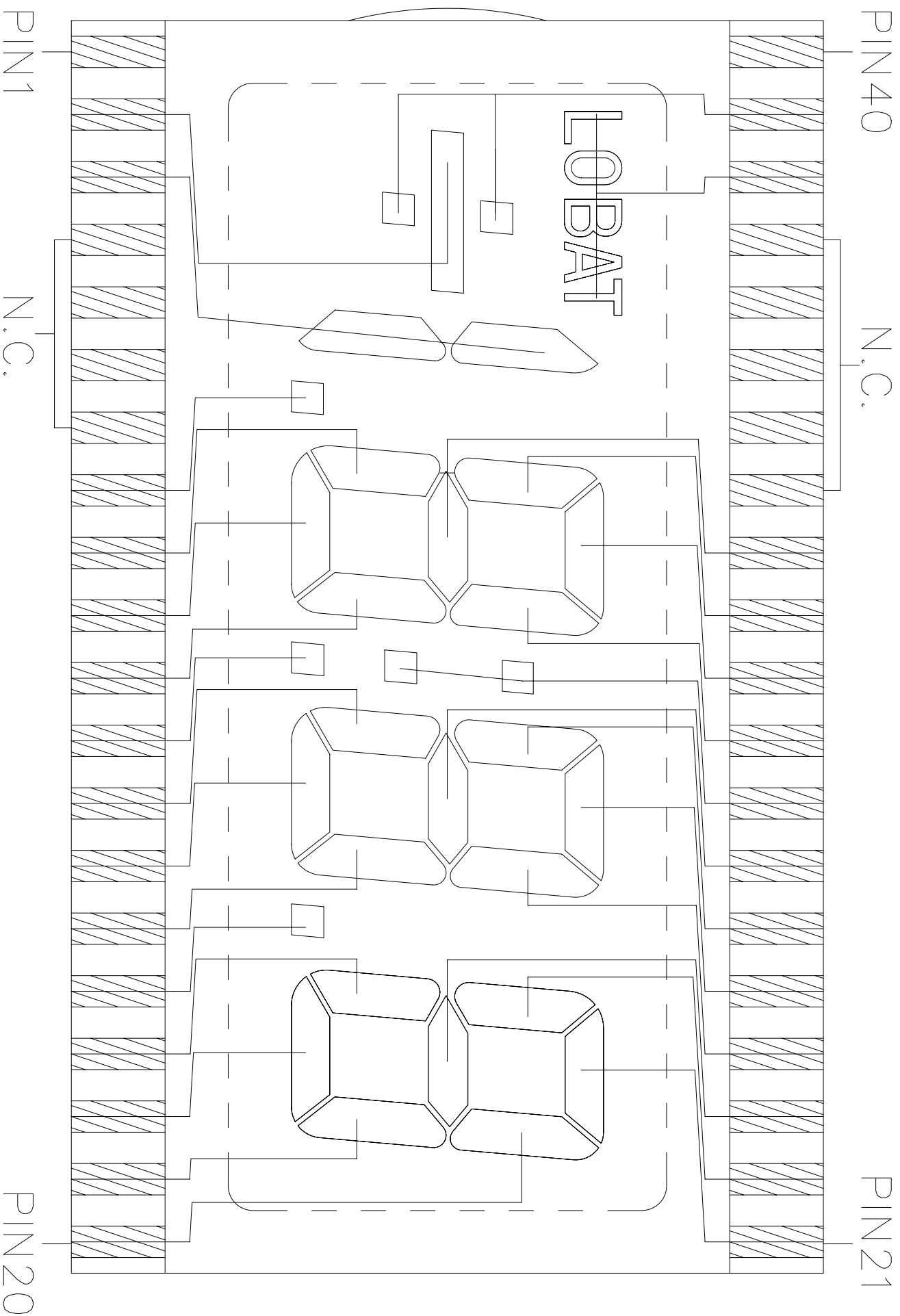




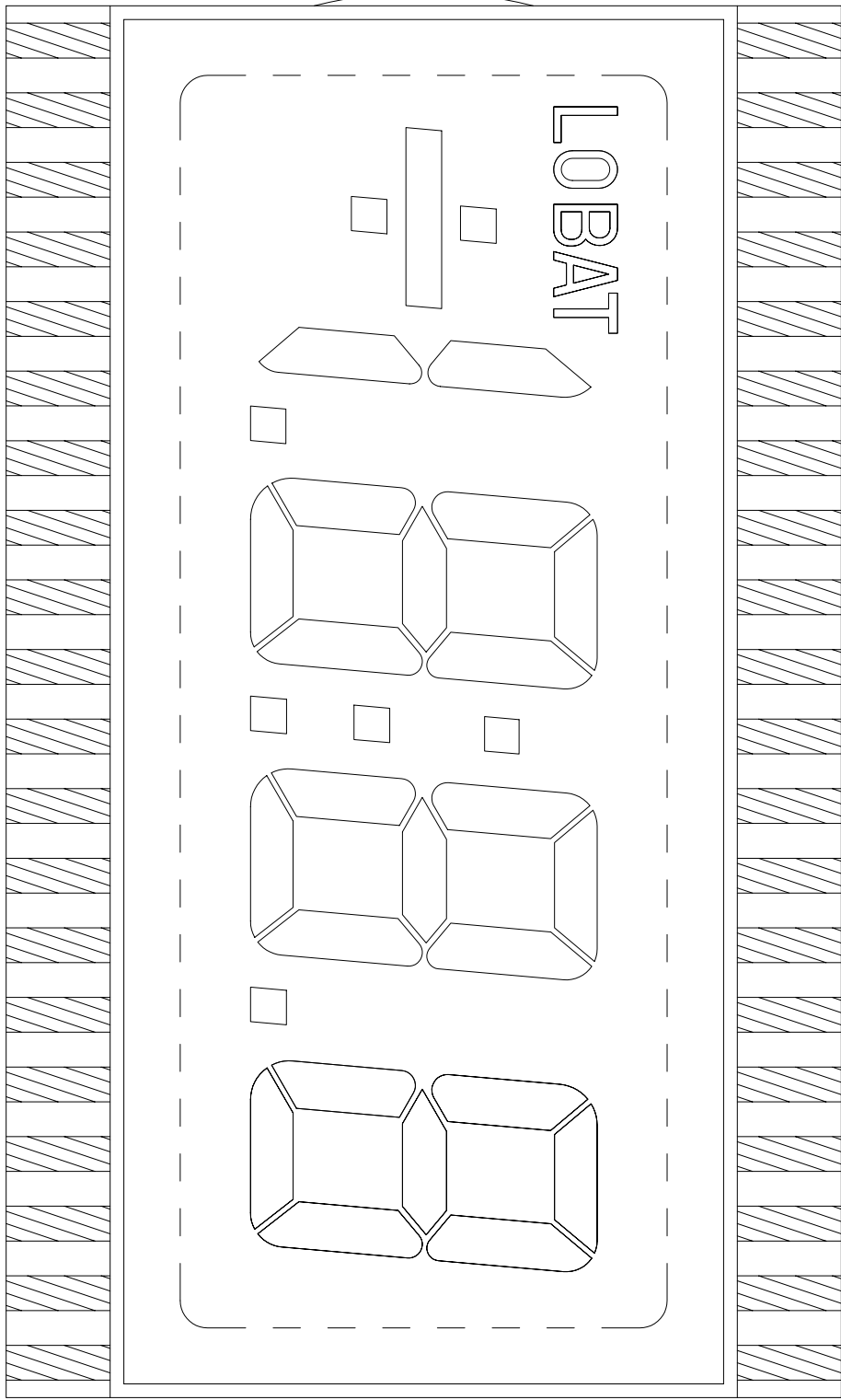
DWG.NO.: VI-302-1 (REV.0)



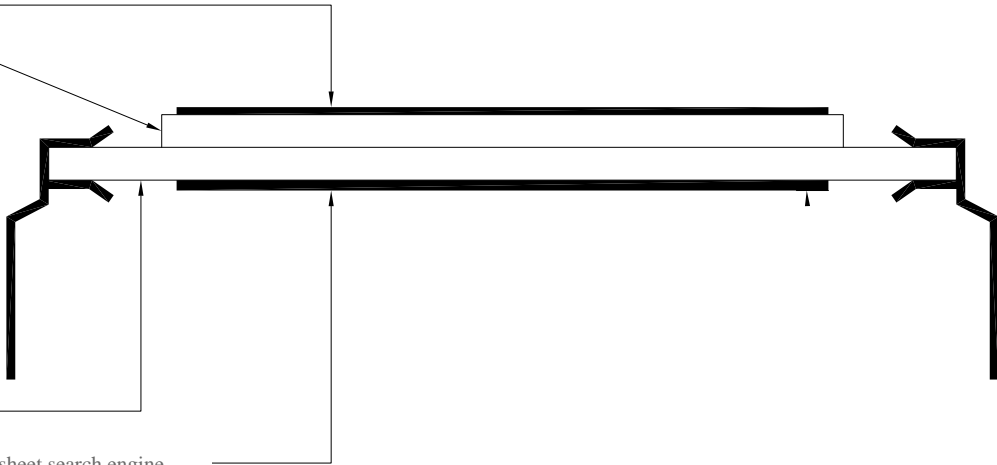
DWG.NO.: VI-302-1 (REV.0)
SEGMENT TRACKING



DWG. NO.: VI-302-1 (REV.0)



FRONT POLARIZER
FRONT GLASS
BACK GLASS
BACK POLARIZER



DWG. NO. : VI-302-1 (REV.0)

PIN	COM
1	COM
2	Y
3	K
4	N.C
5	N.C.
6	N.C.
7	N.C.
8	DP1
9	1E
10	1D
11	1C
12	DP2
13	2E
14	2D
15	2C
16	DP3
17	3E
18	3D
19	3C
20	3B

PIN	COM
21	3A
22	3F
23	3G
24	2B
25	2A
26	2F
27	2G
28	L
29	1B
30	1A
31	1F
32	1G
33	N.C.
34	N.C.
35	N.C.
36	N.C.
37	N.C.
38	Z
39	X
40	COM

REMARKS : N.C. = NO CONNECTION

P.C.B. LINKAGE : PIN1 & PIN40