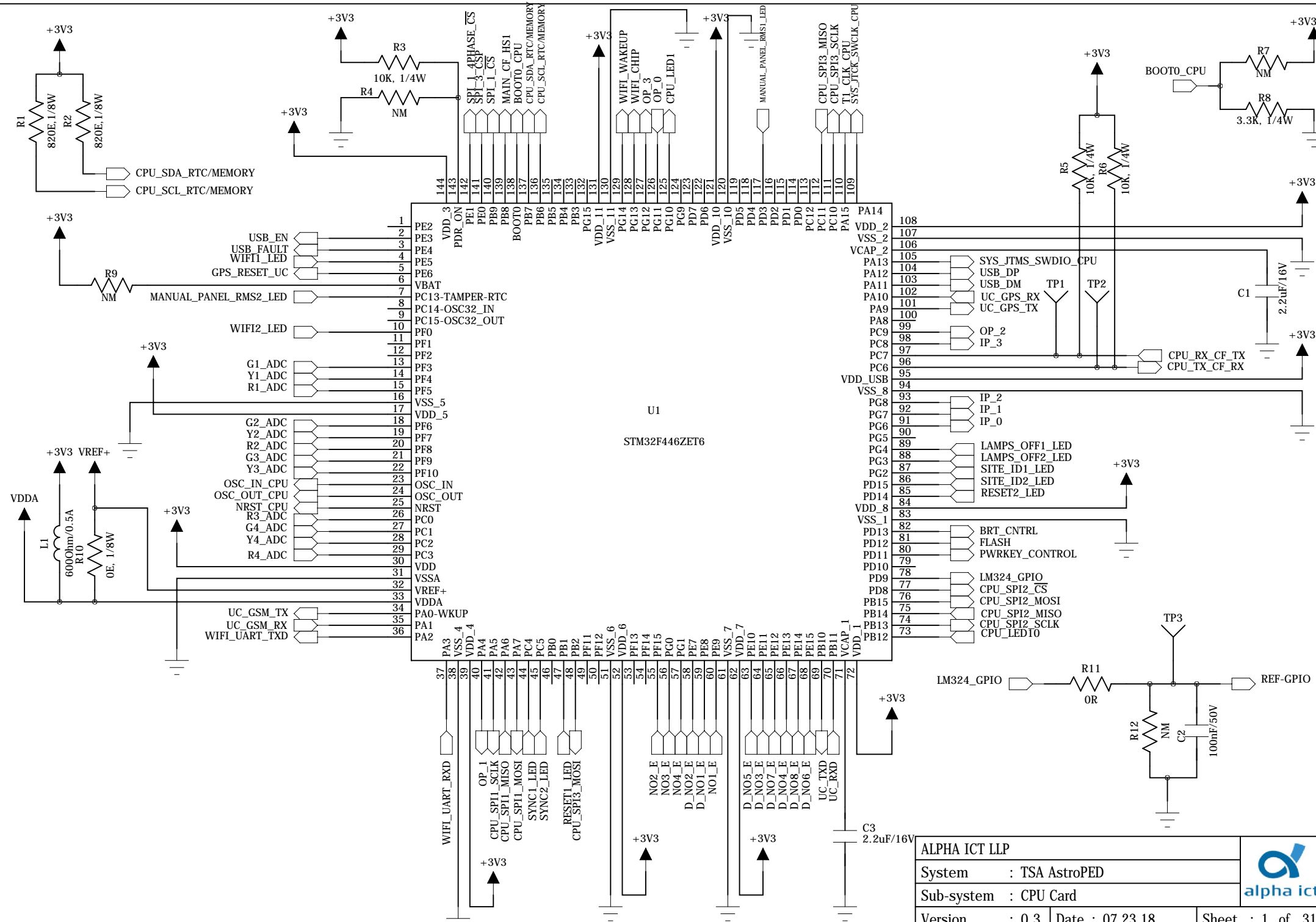



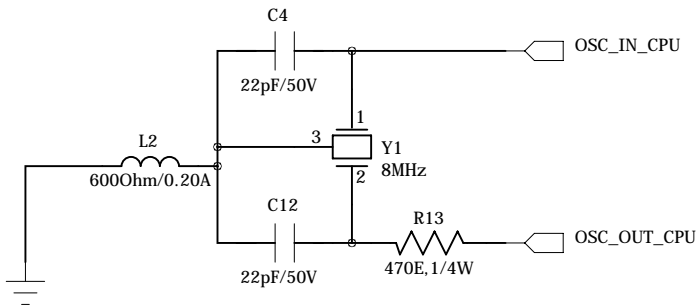
This document is a property of Alpha ICT LLP. Disclosure of the Contents to any third party without written consent of Alpha ICT is forbidden.



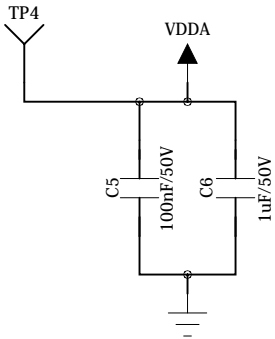
This document is controlled in electronic format only. Any printed copy is up to date only at the time of printing.

ALPHA ICT LLP			
System : TSA AstroPED			
Sub-system : CPU Card			
Version : 0.3	Date : 07.23.18	Sheet : 1 of 31	
Document Format No.:DSN-18		Document Format Version:V1.0	

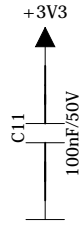
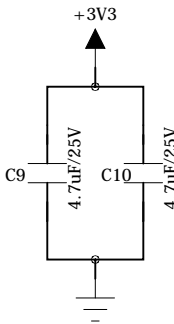
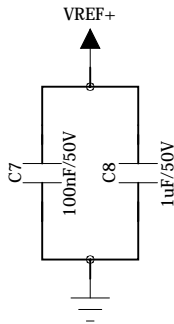
For 8 MHz Crystal



Near To VDDA Pin



Near To Vref+

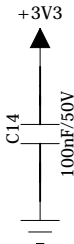


Pin 144

For +3V3 and GND Decap



Pin 16 & 17



Pin 30



Pin 38 & 39



Pin 51 & 52



Pin 61 & 62



Pin 72 & 83



Pin 84 & 94



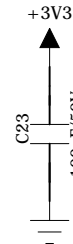
Pin 95



Pin 107 & 108

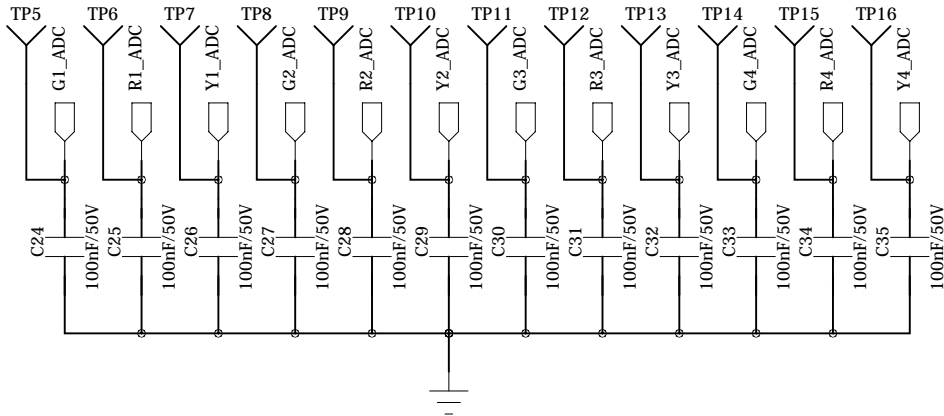



Pin 120 & 121



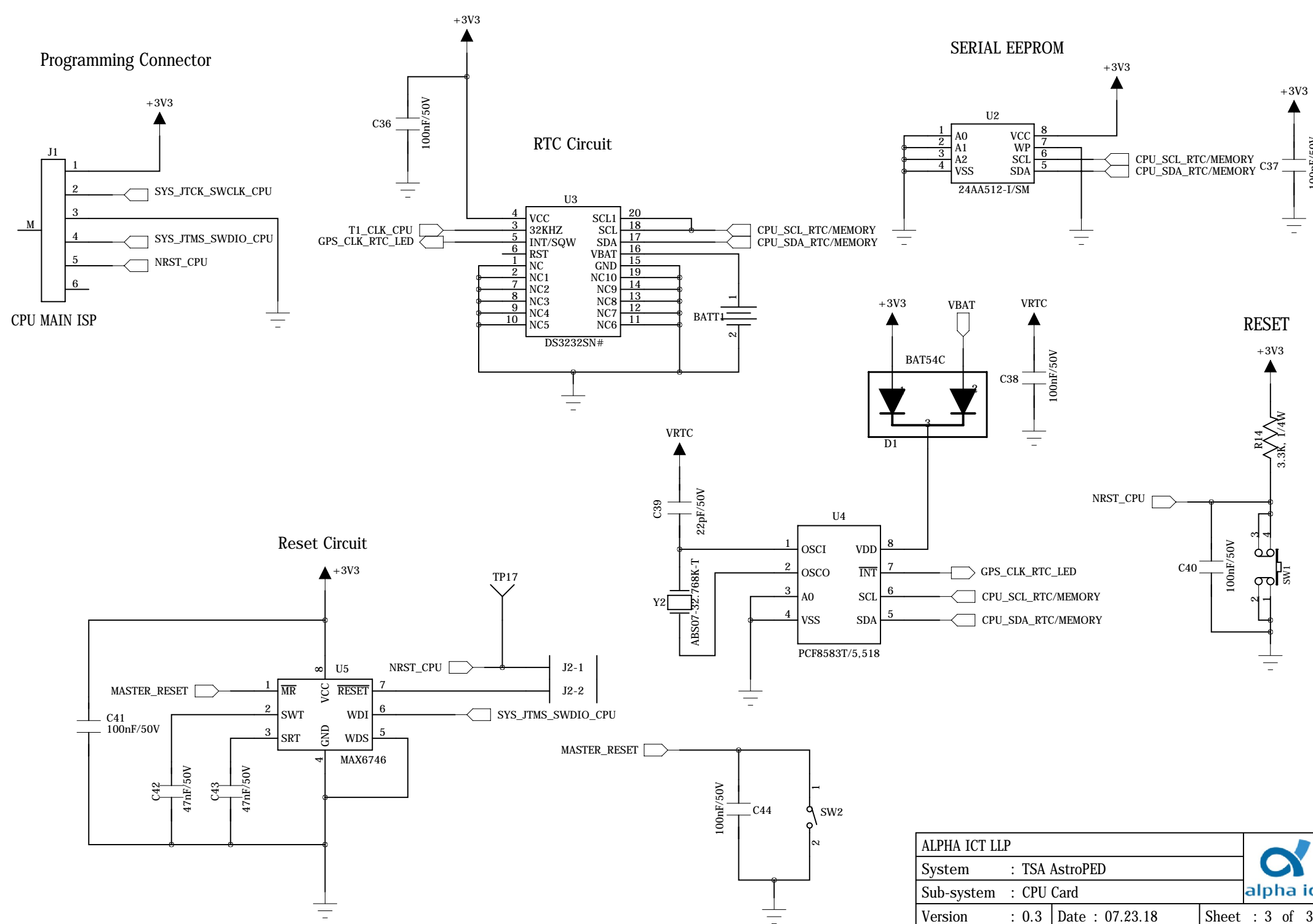
Pin 130 & 131

For ADC Input Decap




ALPHA ICT LLP			
System : TSA AstroPED			
Sub-system : CPU Card			
Version : 0.3	Date : 07.23.18	Sheet : 2 of 31	
Document Format No.:DSN-18		Document Format Version:V1.0	

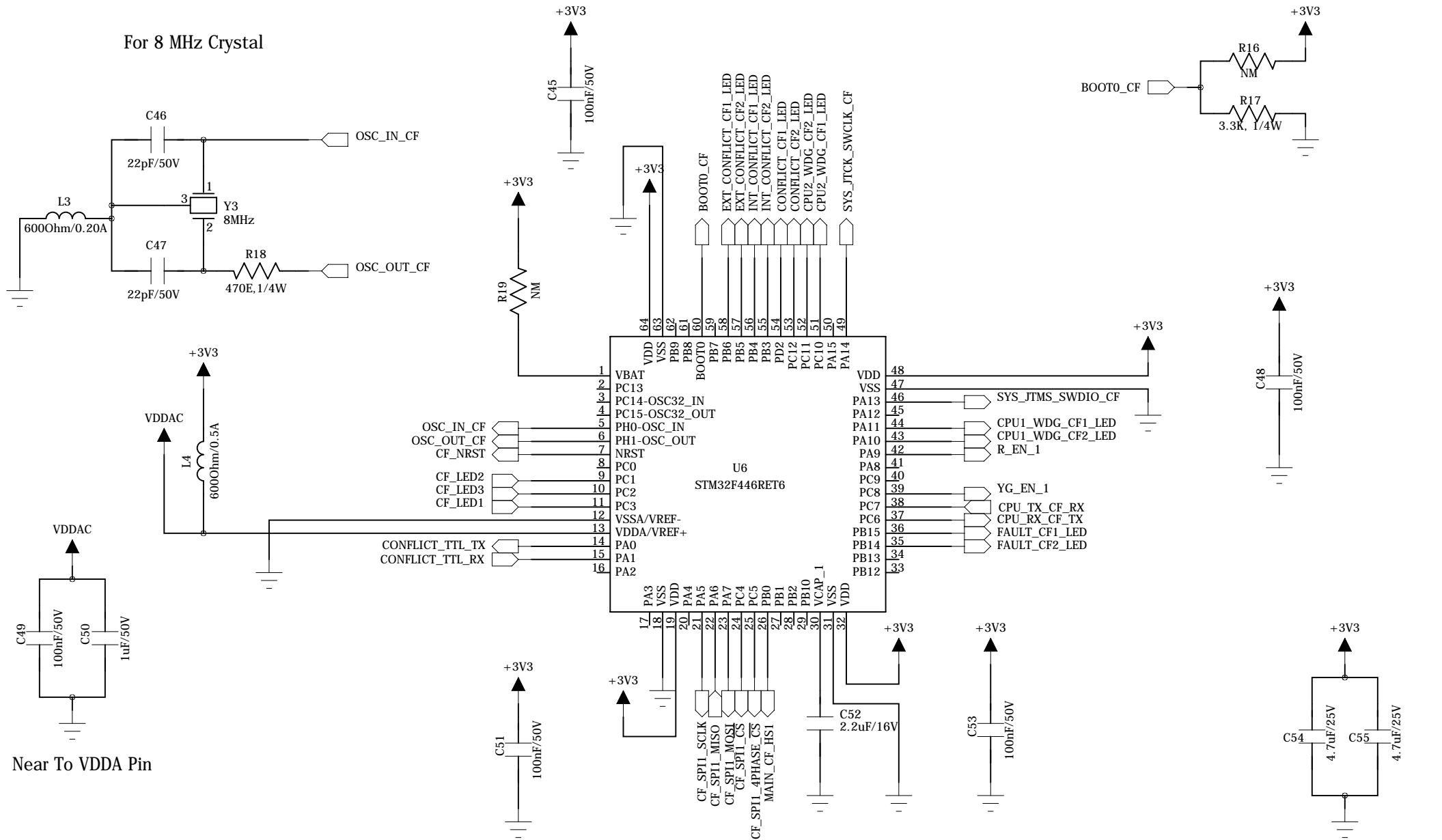
This document is a property of Alpha ICT LLP. Disclosure of the Contents to any third party without written consent of Alpha ICT is forbidden.



This document is controlled in electronic format only. Any printed copy is up to date only at the time of printing.


ALPHA ICT LLP			
System : TSA AstroPED			
Sub-system : CPU Card			
Version : 0.3	Date : 07.23.18	Sheet : 3 of 31	
Document Format No.:DSN-18		Document Format Version:V1.0	

This document is a property of Alpha ICT LLP. Disclosure of the Contents to any third party without written consent of Alpha ICT is forbidden.

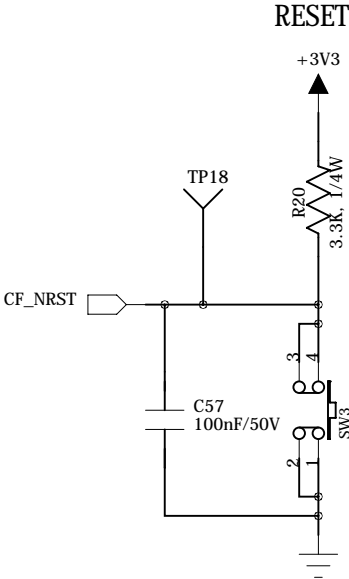
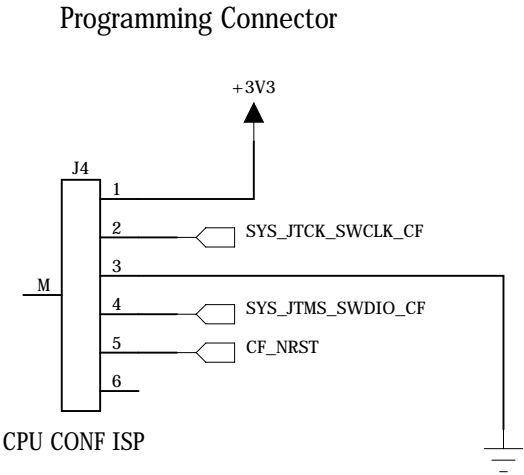
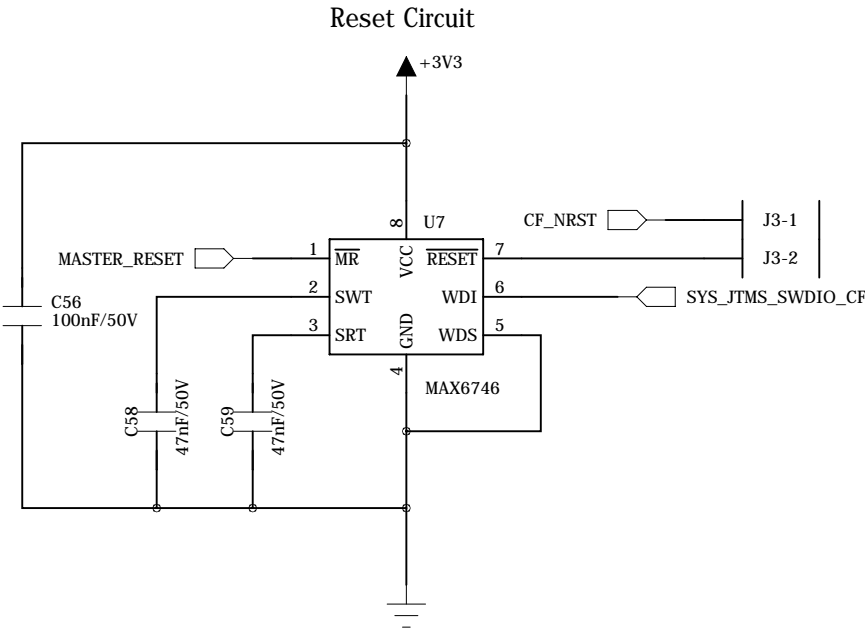


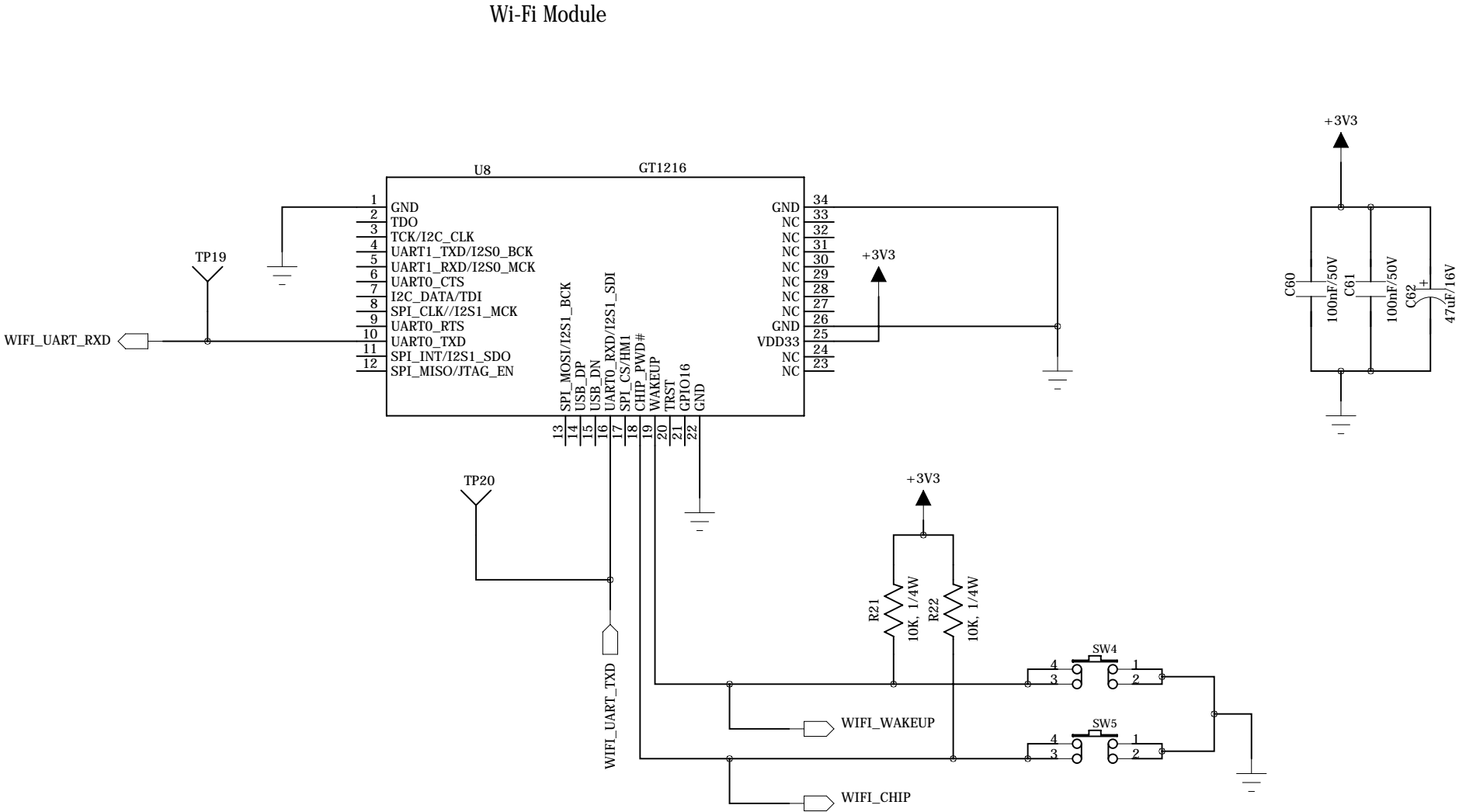
Near To VDDA Pin

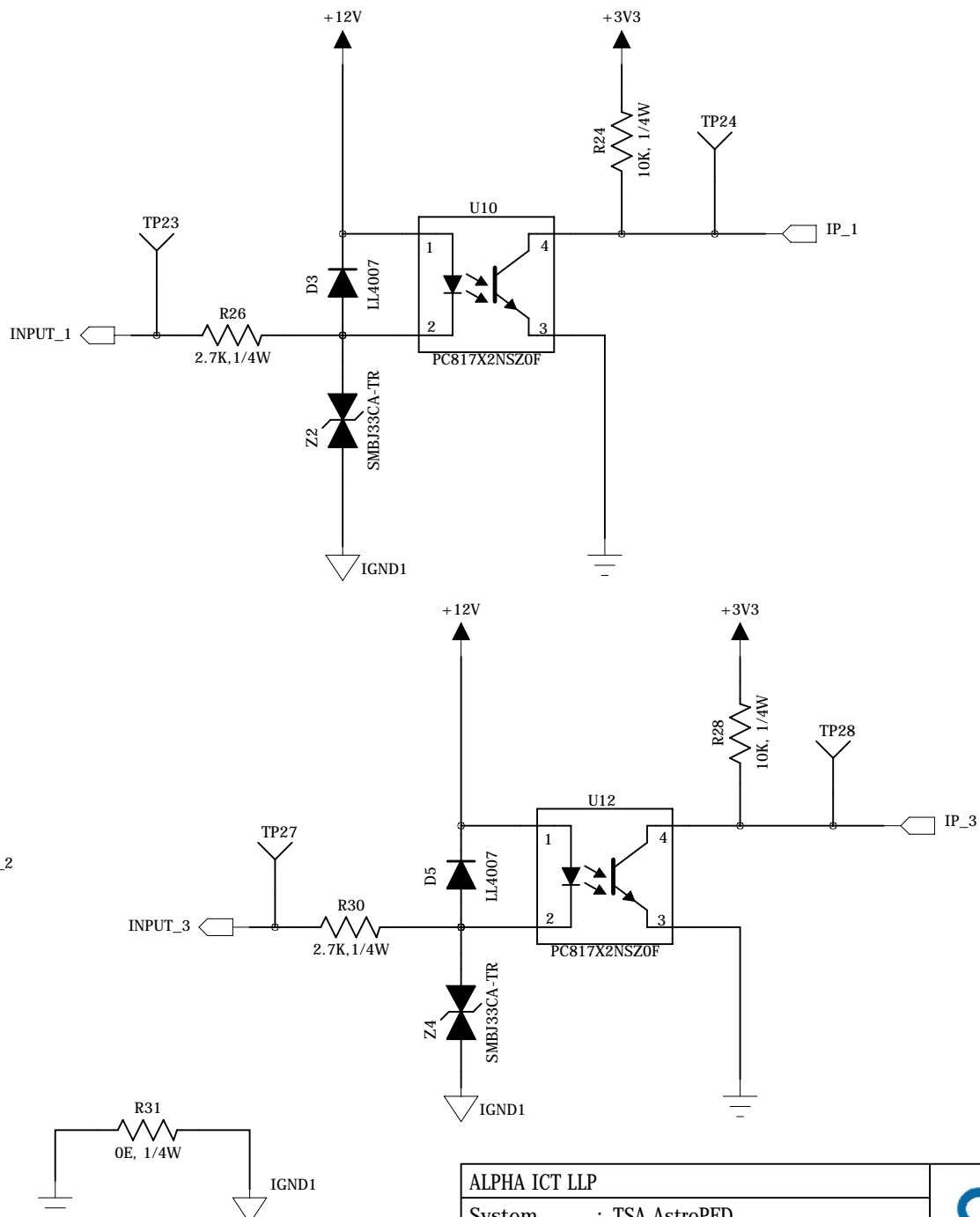
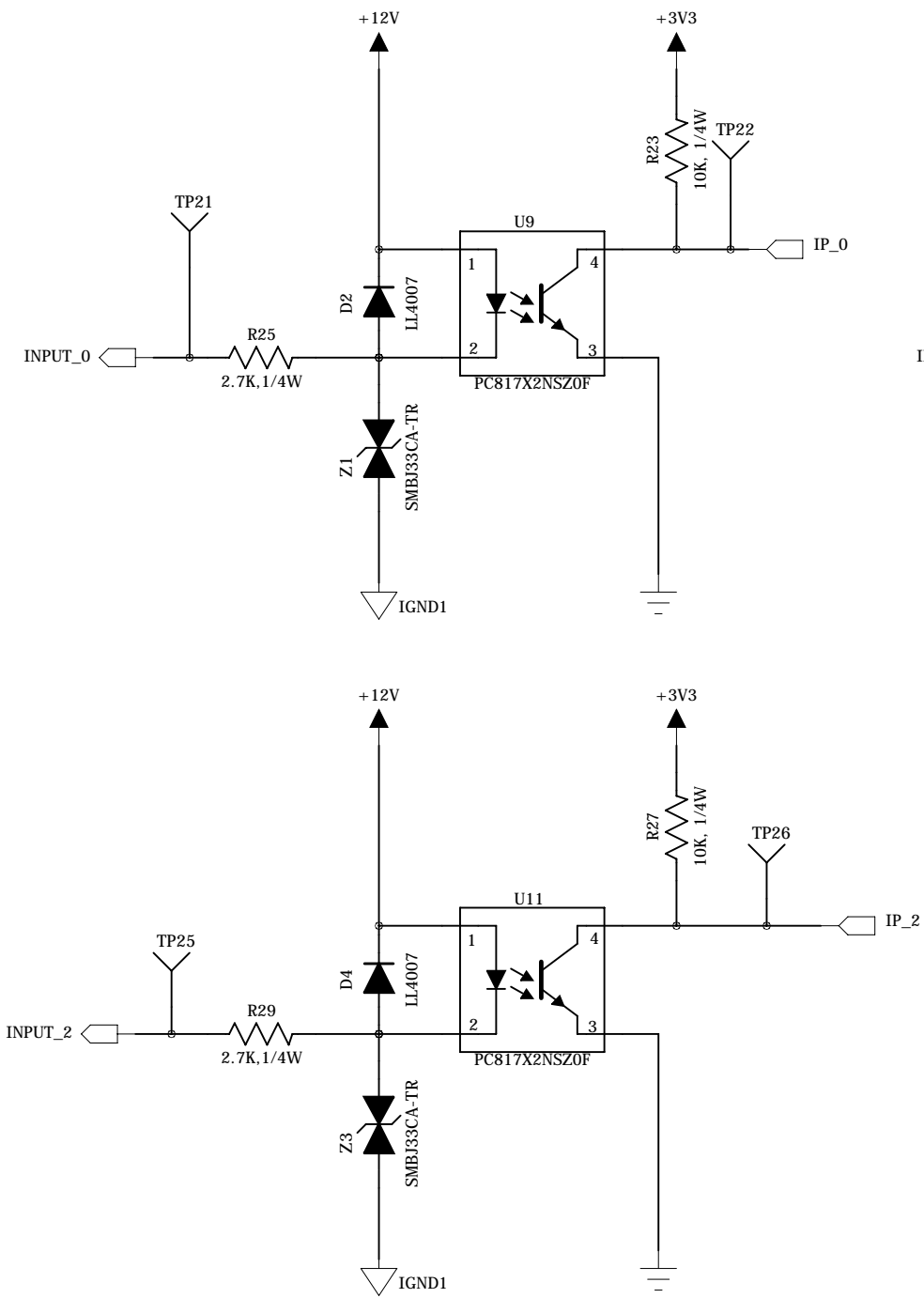
For 8 MHz Crystal


ALPHA ICT LLP			
System : TSA AstroPED			
Sub-system : CPU Card			
Version : 0.3	Date : 07.23.18	Sheet : 4 of 31	
Document Format No.:DSN-18		Document Format Version:V1.0	

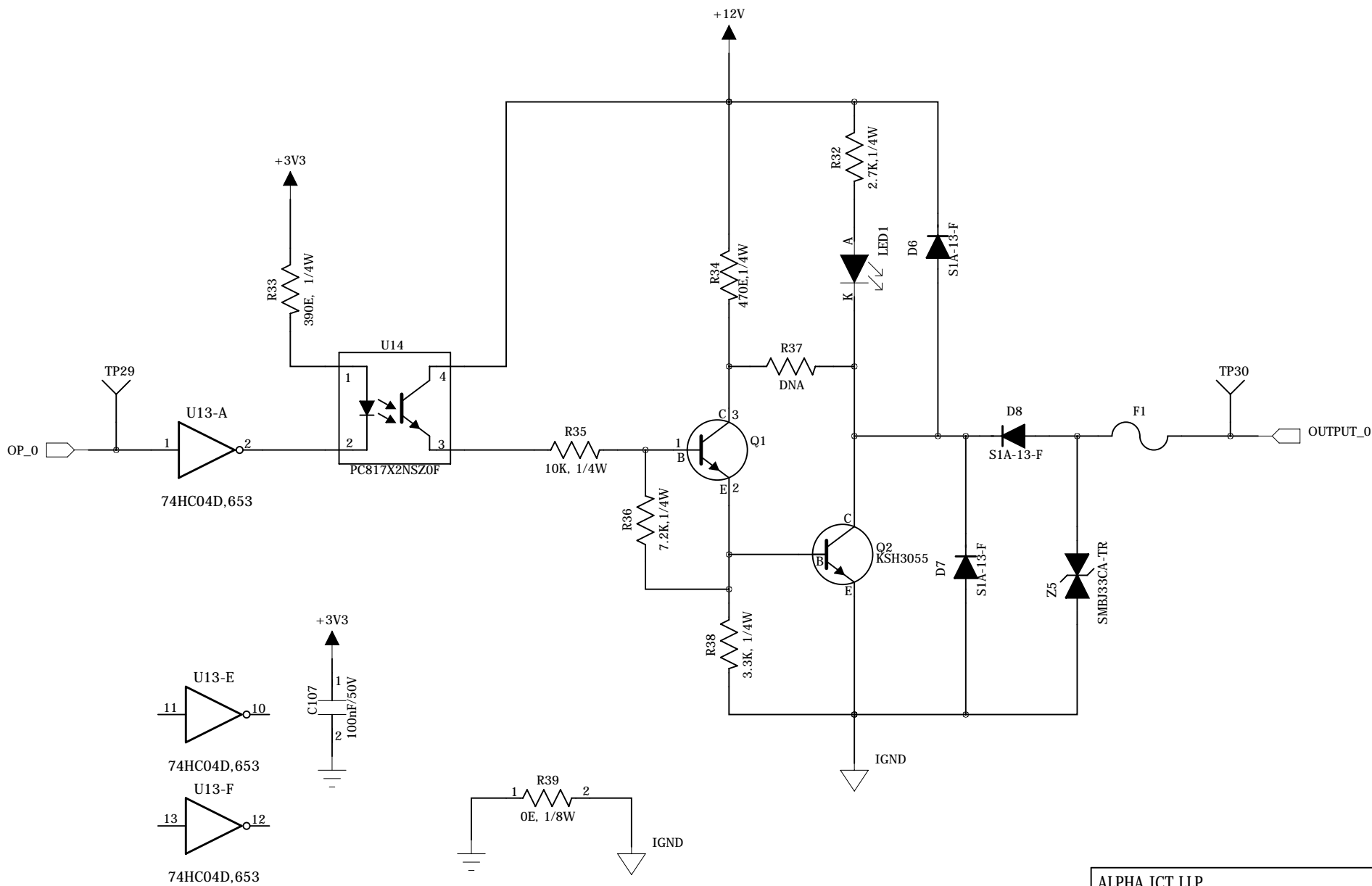
This document is controlled in electronic format only.Any printed copy is up to date only at the time of printing.

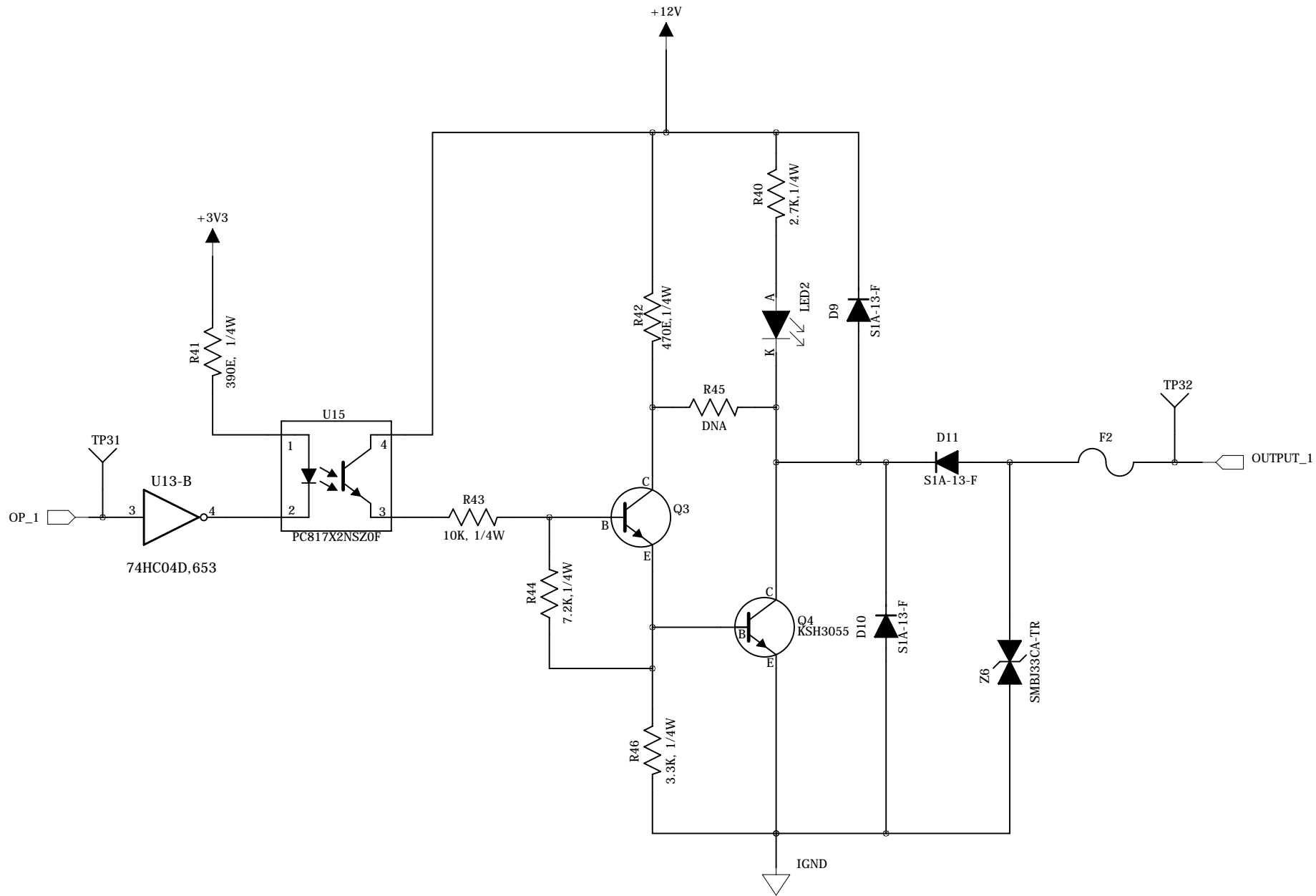


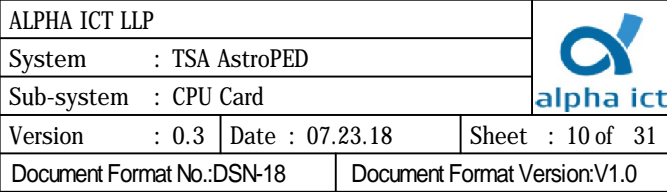


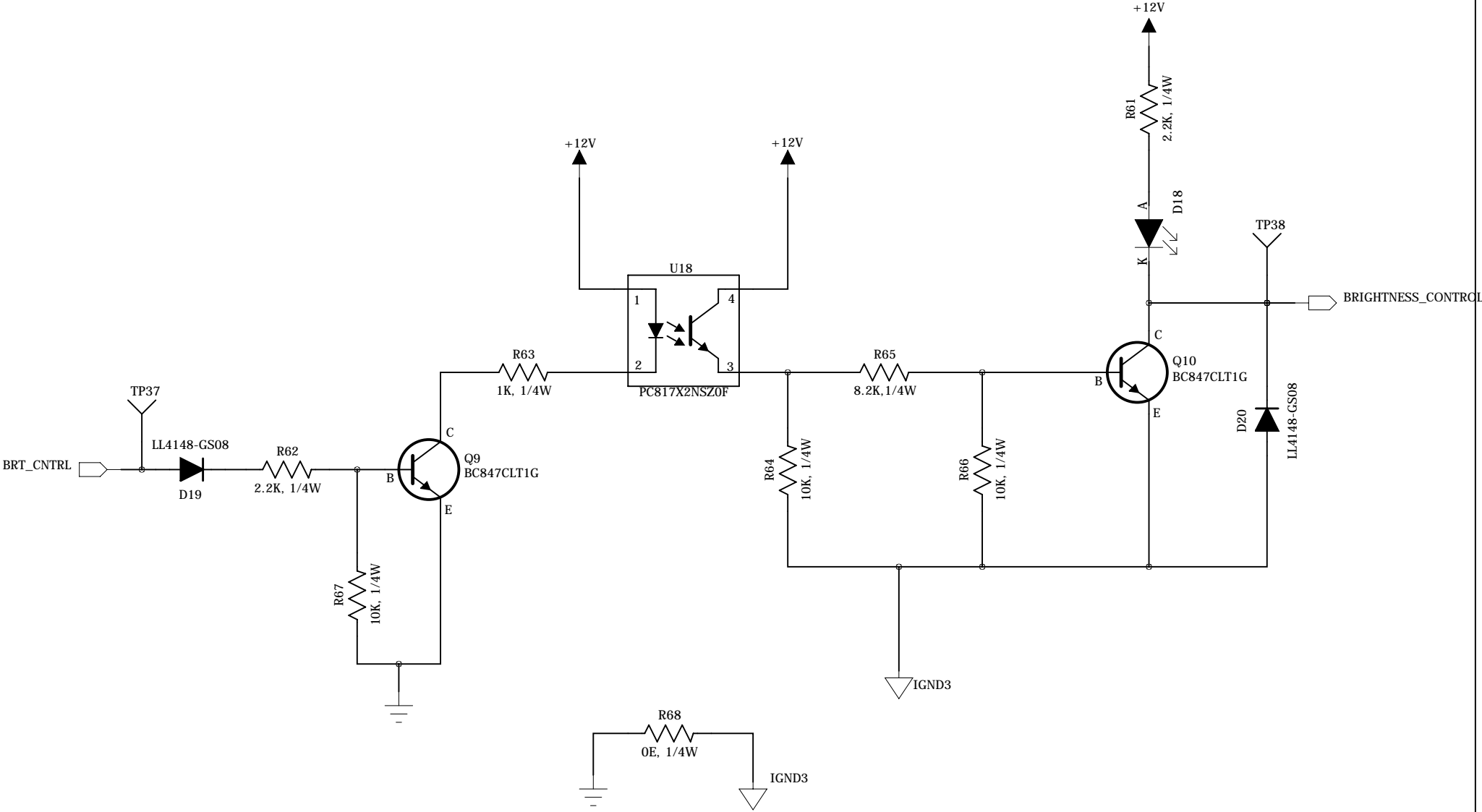



ALPHA ICT LLP			
System : TSA AstroPED			
Sub-system : CPU Card			
Version : 0.3	Date : 07.23.18	Sheet : 7 of 31	
Document Format No.:DSN-18		Document Format Version:V1.0	

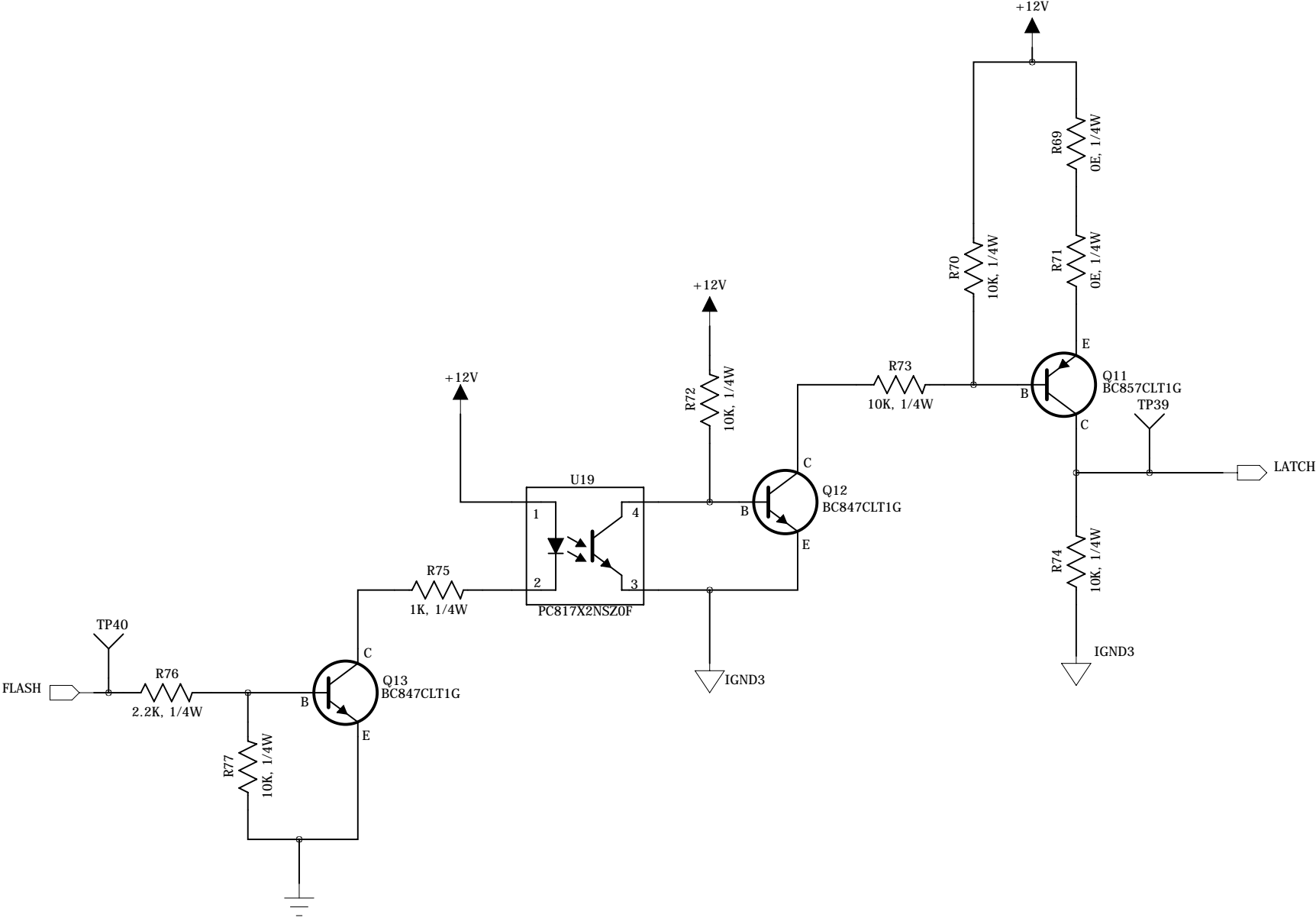





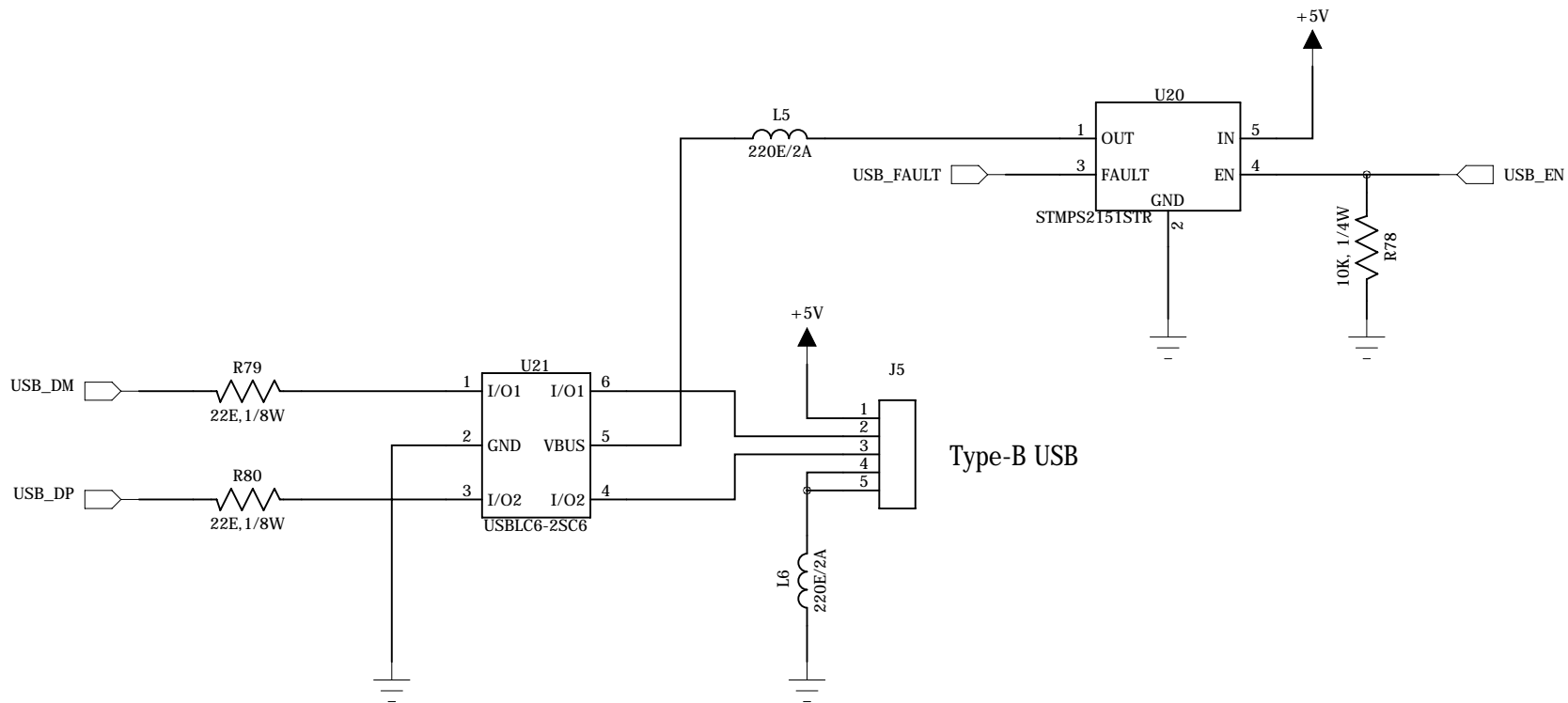





ALPHA ICT LLP			
System : TSA AstroPED			
Sub-system : CPU Card			
Version : 0.3	Date : 07.23.18	Sheet : 12 of 31	
Document Format No.:DSN-18		Document Format Version:V1.0	

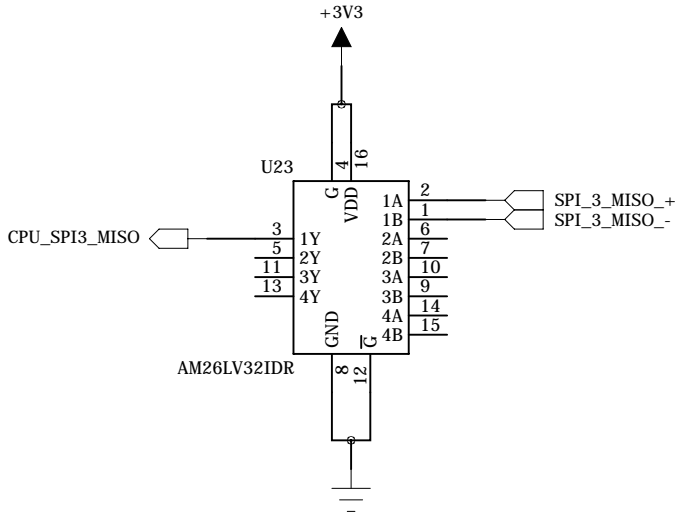
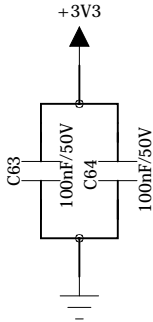
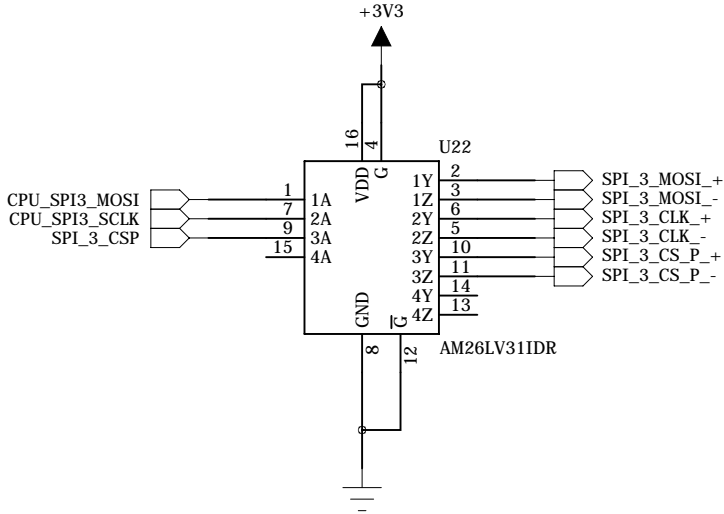
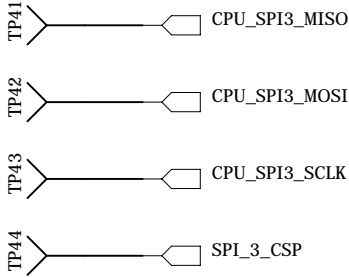


ALPHA ICT LLP			
System : TSA AstroPED			
Sub-system : CPU Card			
Version : 0.3	Date : 07.23.18	Sheet : 13 of 31	
Document Format No.:DSN-18		Document Format Version:V1.0	

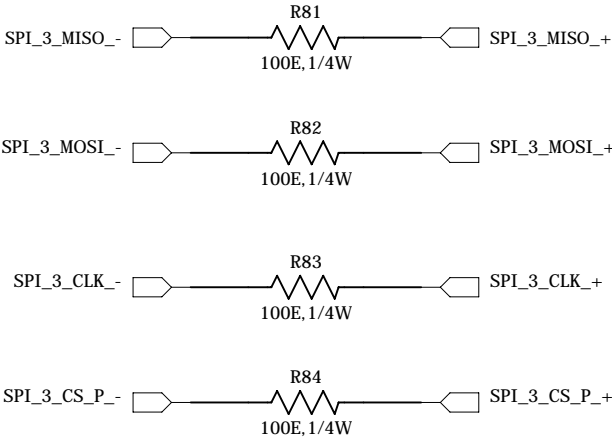


ALPHA ICT LLP			
System : TSA AstroPED			
Sub-system : CPU Card			
Version : 0.3	Date : 07.23.18	Sheet : 14 of 31	
Document Format No.:DSN-18		Document Format Version:V1.0	

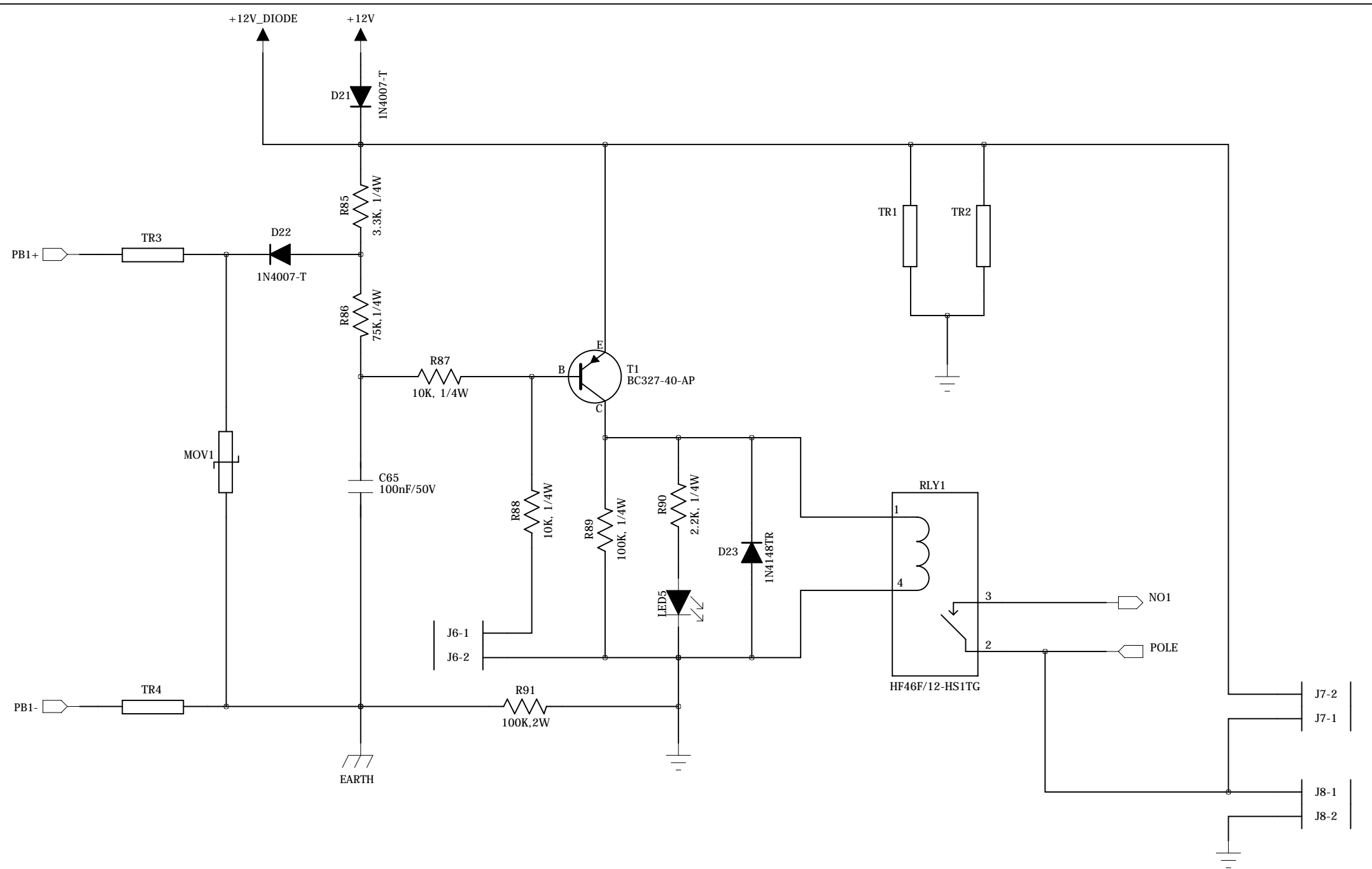
Signal Conversion




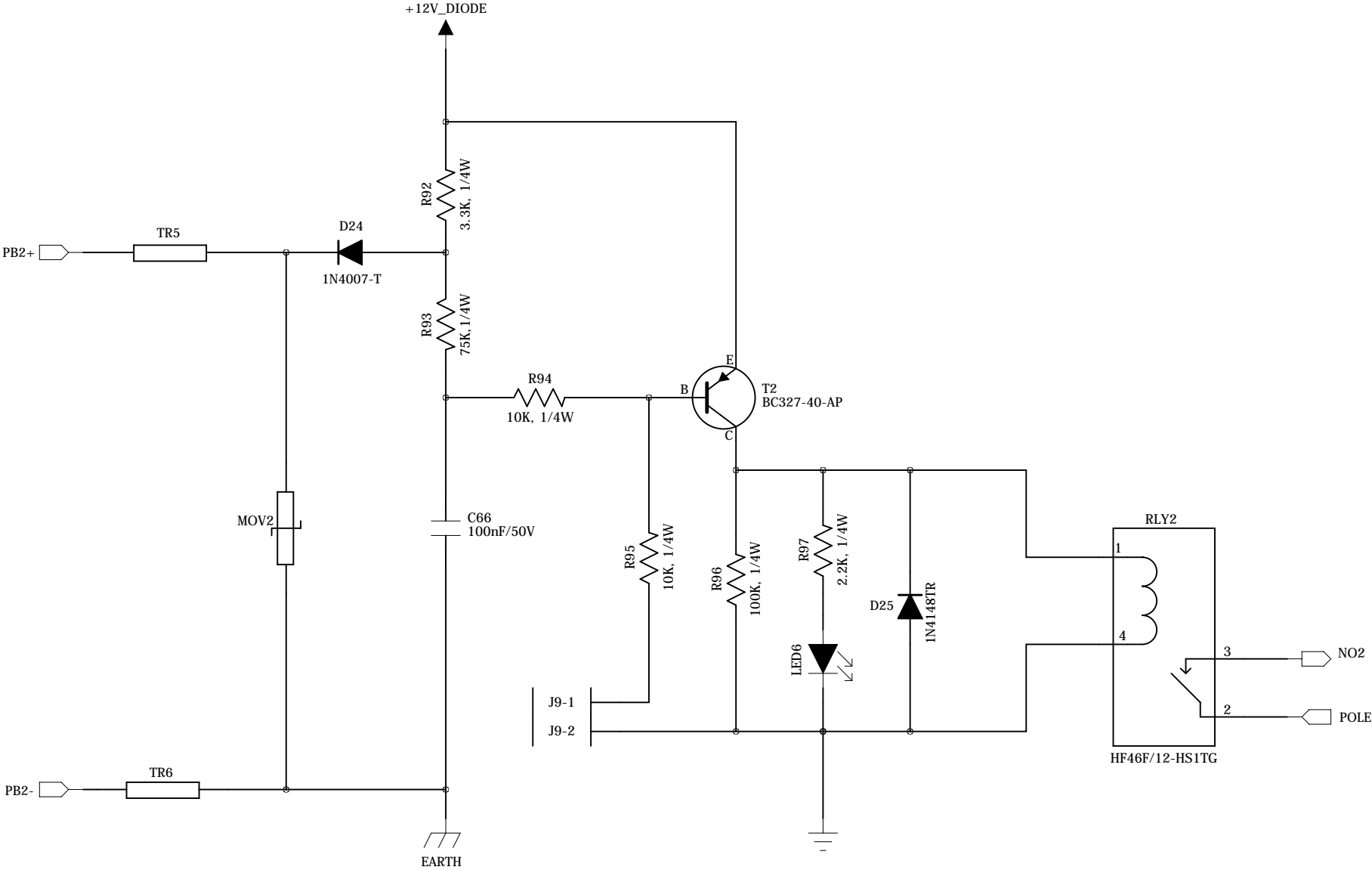
Termination Resistor

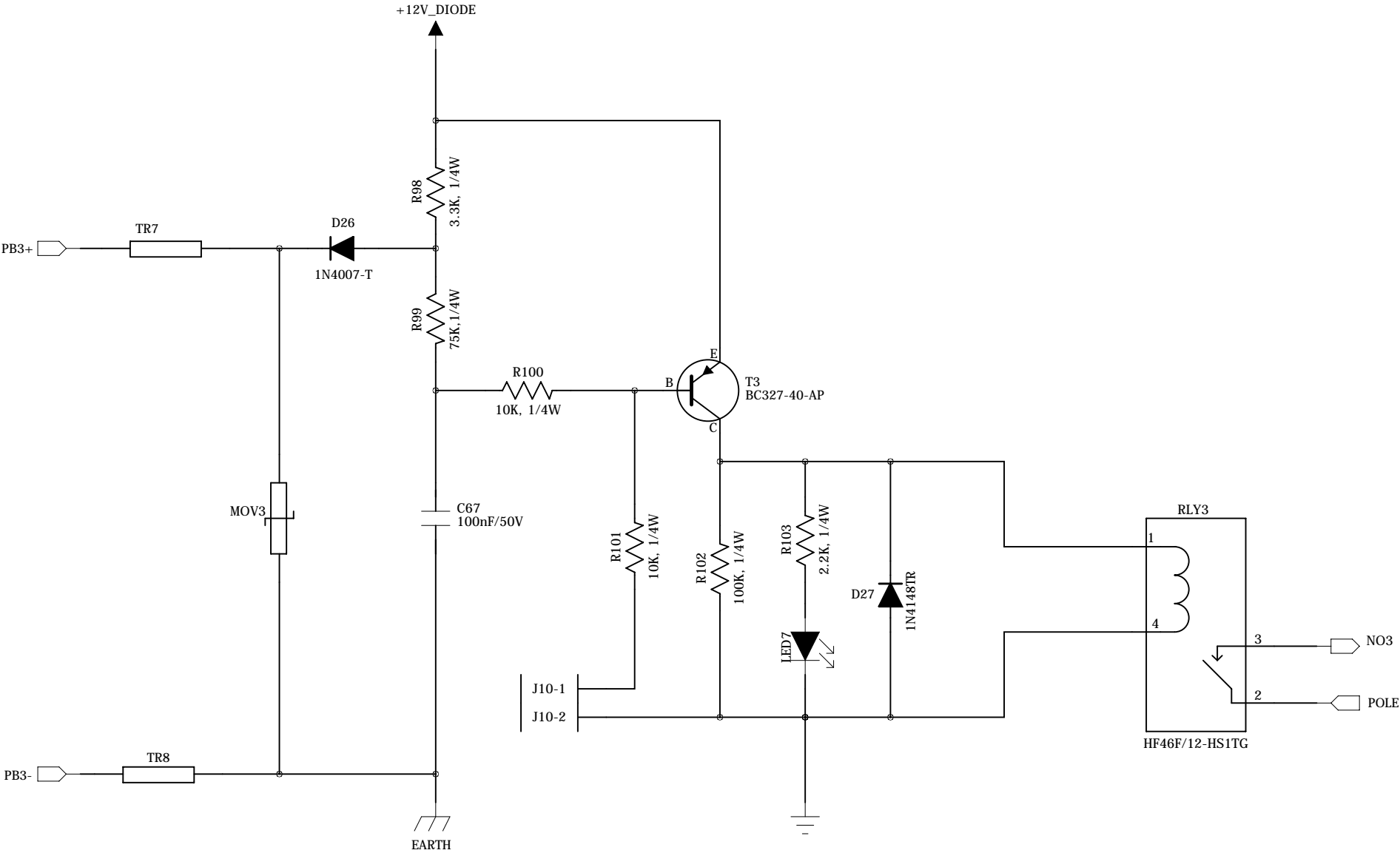


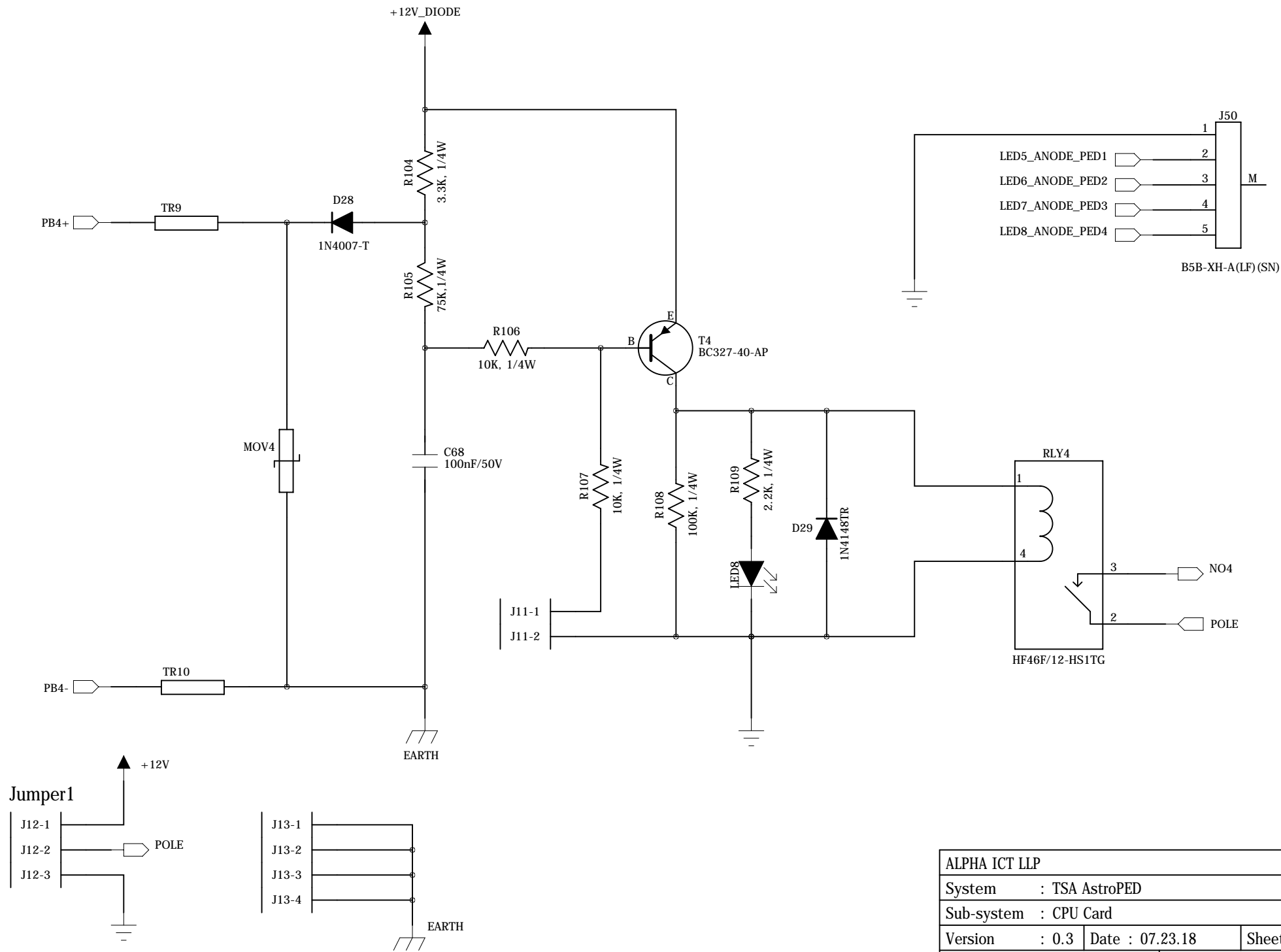
This document is a property of Alpha ICT LLP. Disclosure of the Contents to any third party without written consent of Alpha ICT is forbidden.



ALPHA ICT LLP			
System : TSA AstroPED			
Sub-system : CPU Card			
Version : 0.3	Date : 07.23.18	Sheet : 16 of 31	
Document Format No.:DSN-18		Document Format Version:V1.0	

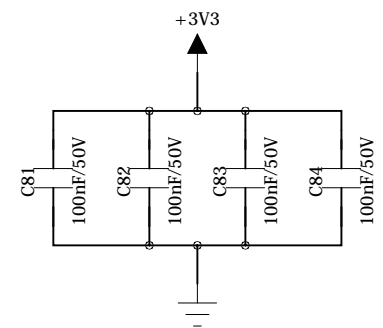
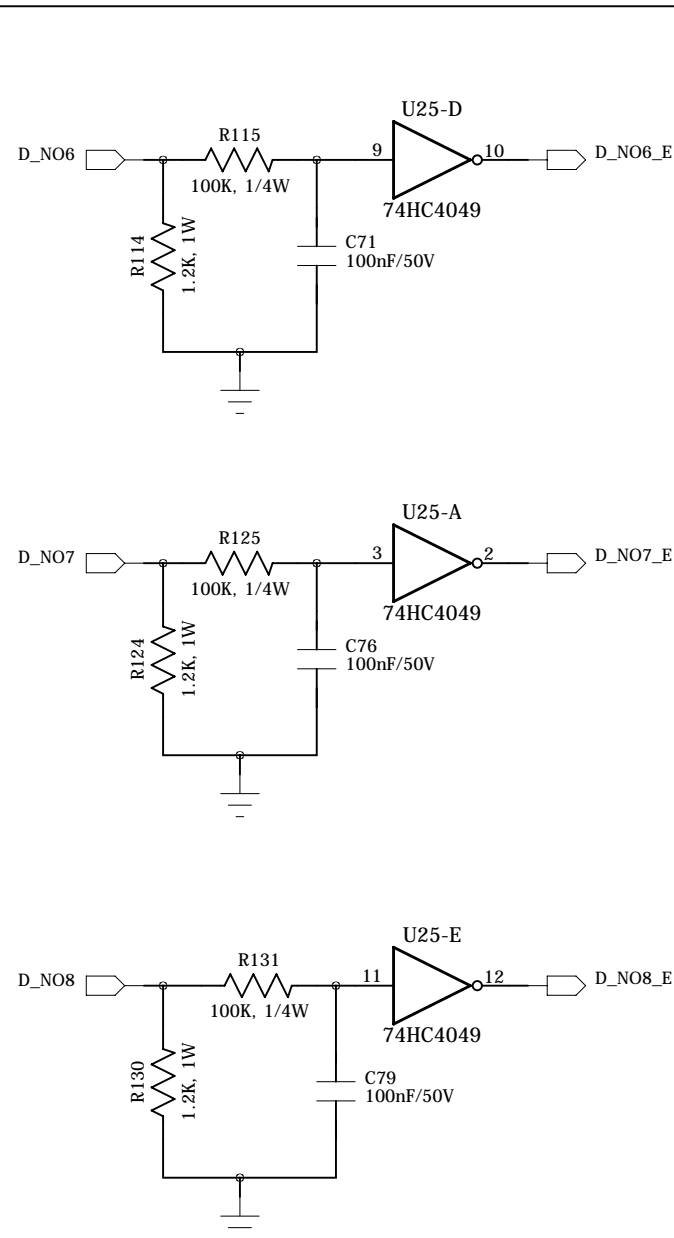
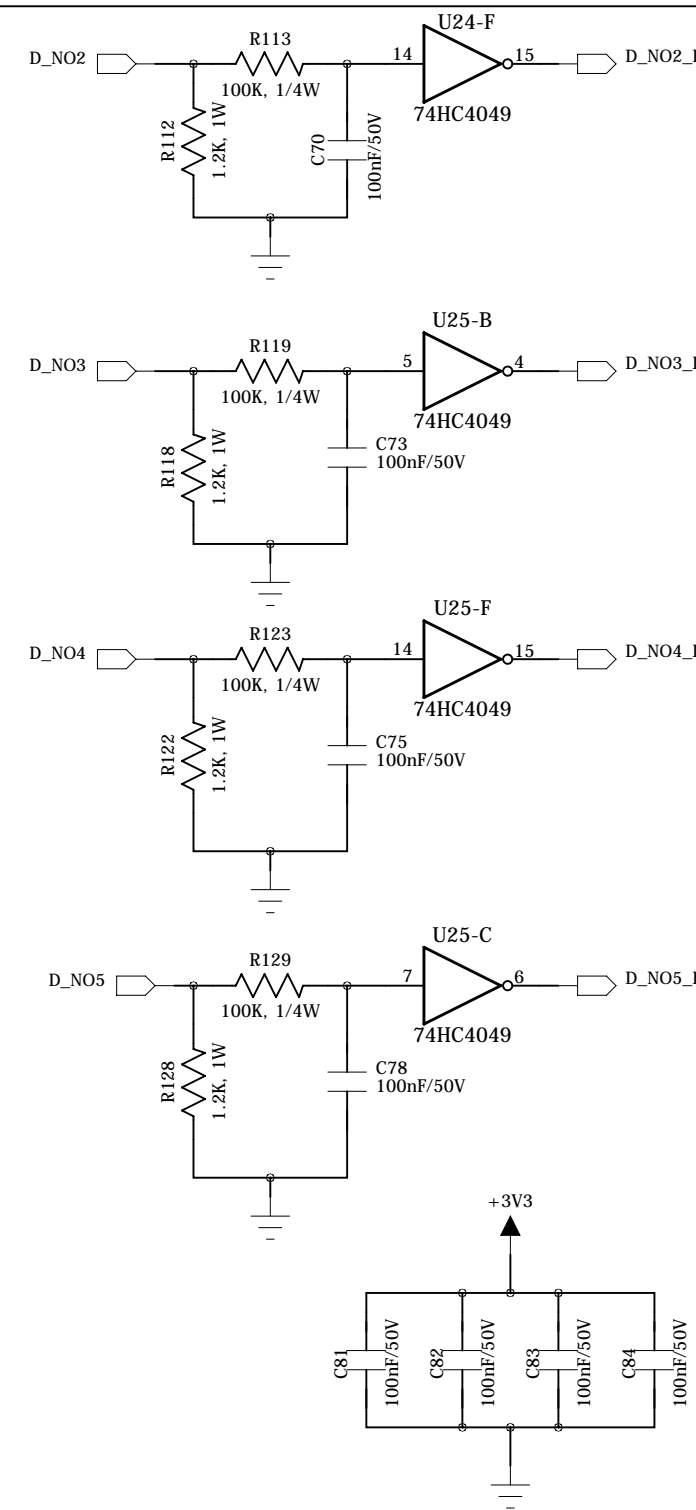
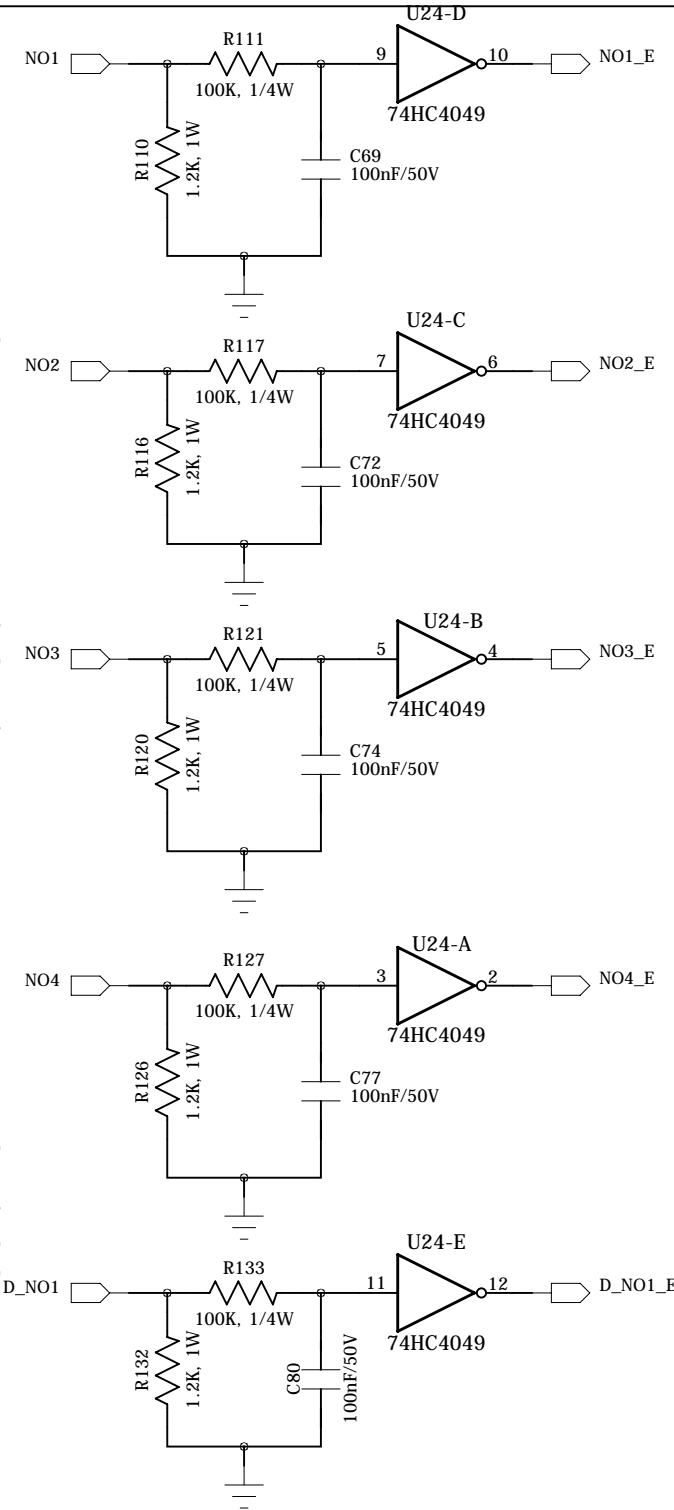







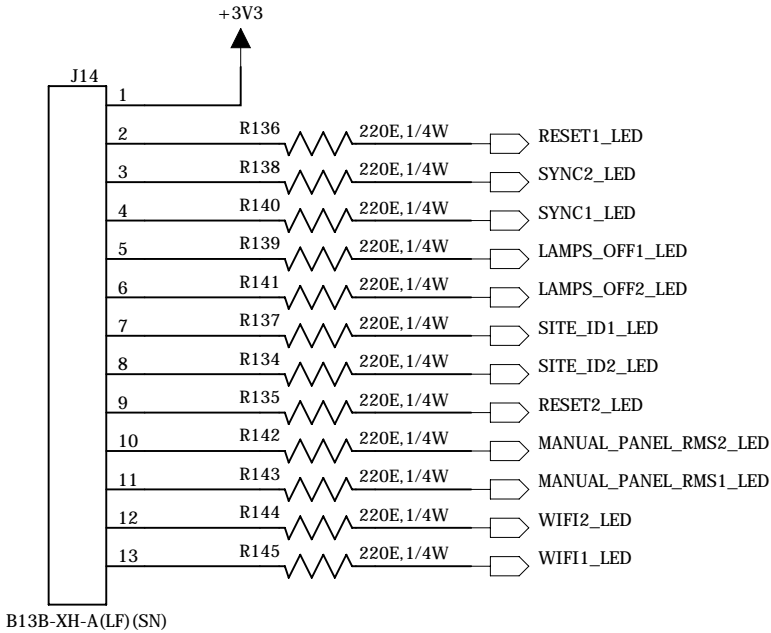
This document is controlled in electronic format only.Any printed copy is up to date only at the time of printing.

This document is a property of Alpha ICT LLP. Disclosure of the Contents to any third party without written consent of Alpha ICT is forbidden.

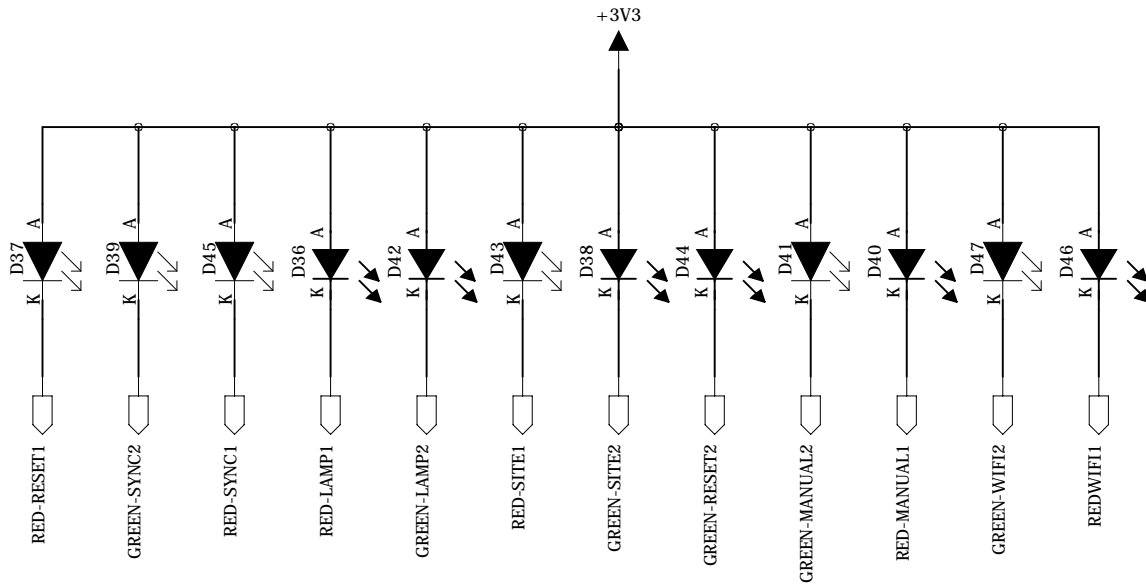
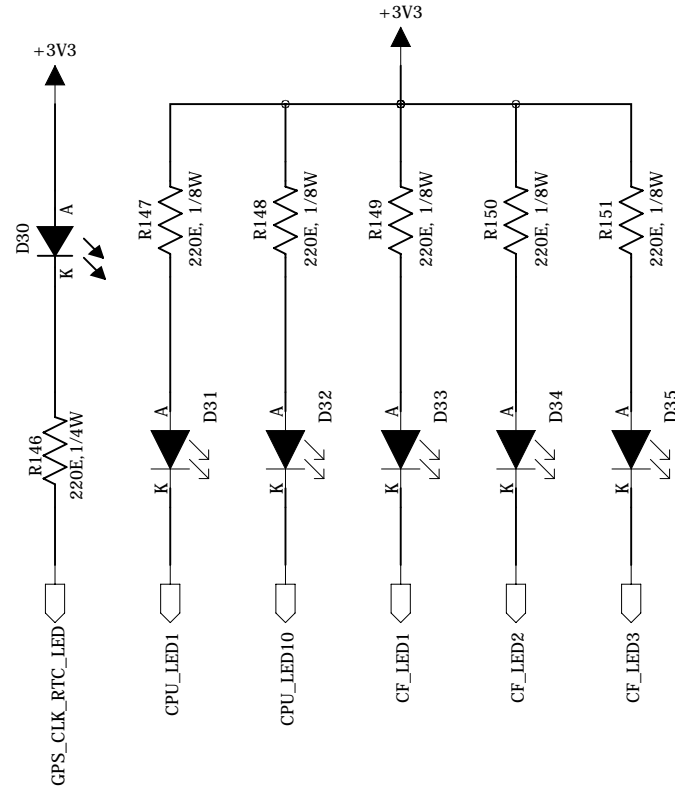



ALPHA ICT LLP			
System : TSA AstroPED			
Sub-system : CPU Card			
Version : 0.3	Date : 07.23.18	Sheet : 20 of 31	
Document Format No.:DSN-18		Document Format Version:V1.0	

On Pannel LED Master CPU

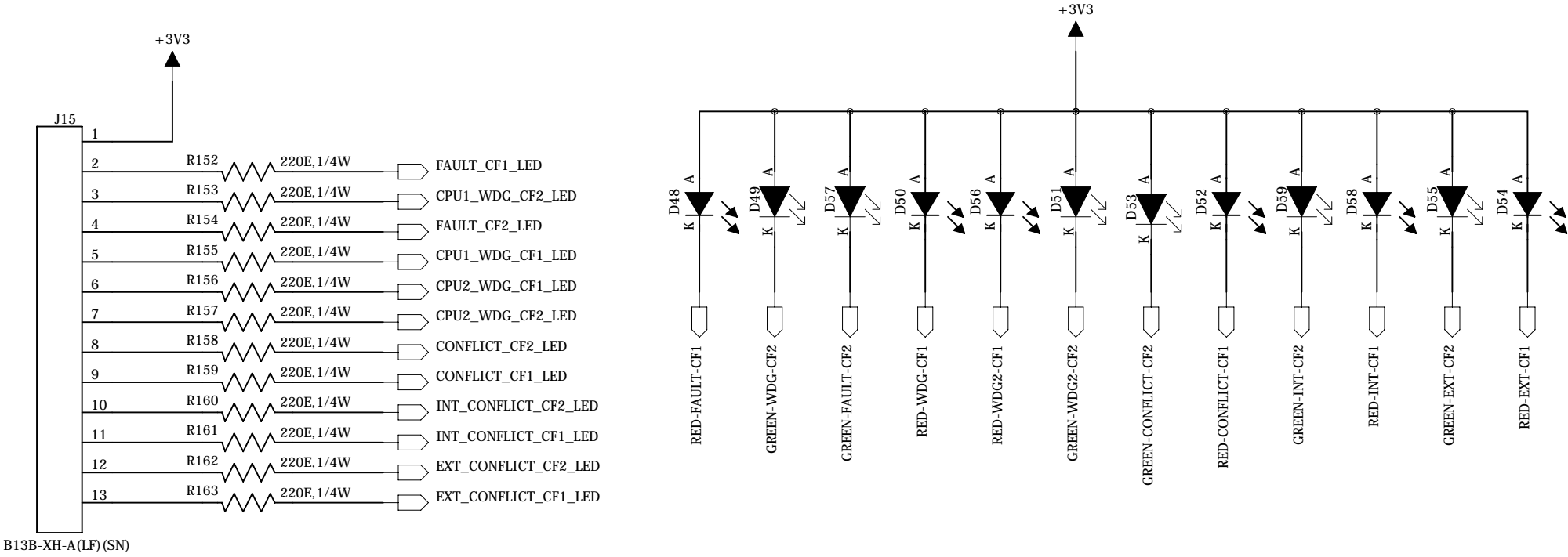


On Board LED




ALPHA ICT LLP			 alpha ict
System : TSA AstroPED			
Sub-system : CPU Card			
Version : 0.3	Date : 07.23.18	Sheet : 21 of 31	
Document Format No.:DSN-18		Document Format Version:V1.0	

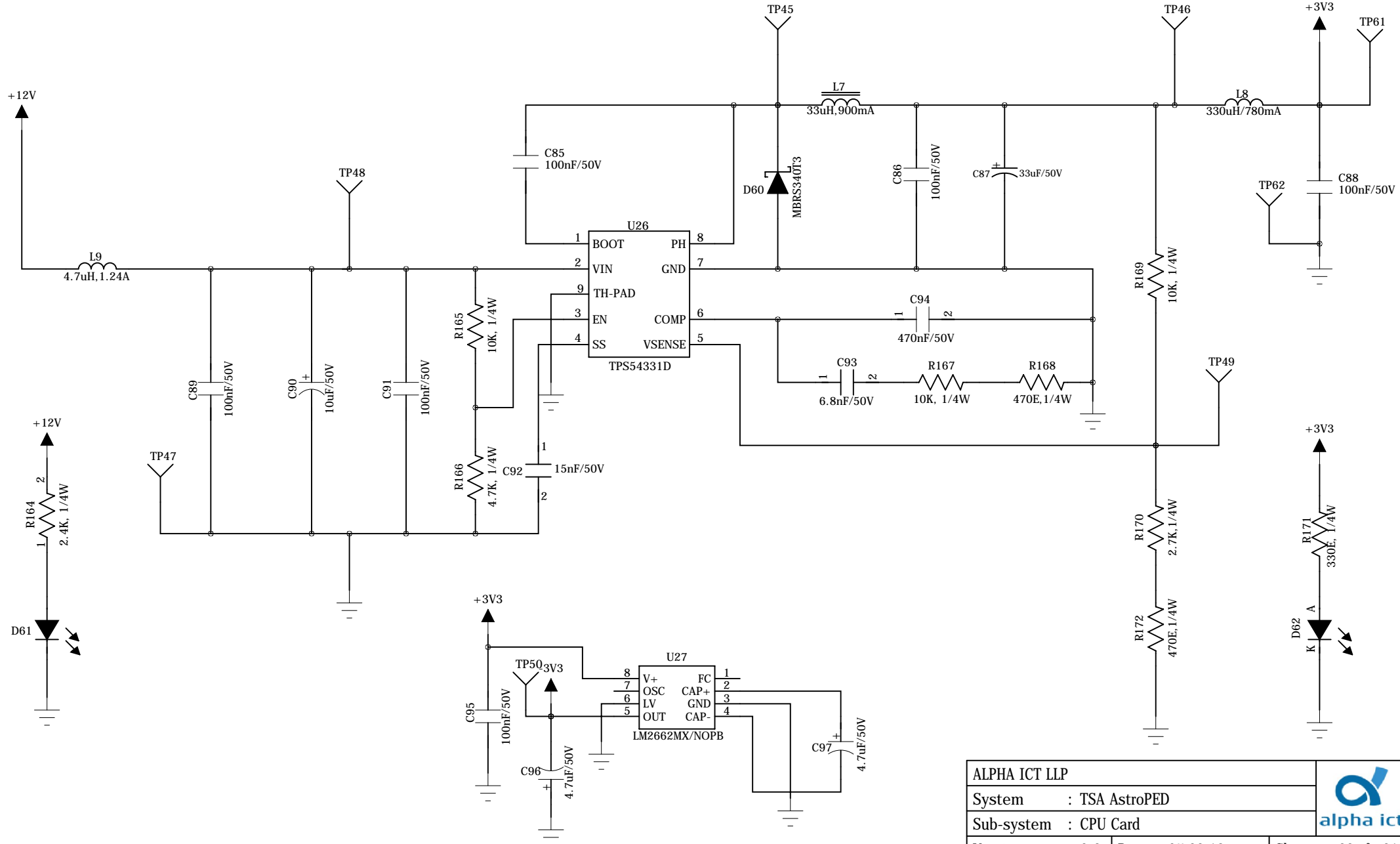
Panel Conflict CPU




This document is a property of Alpha ICT LLP. Disclosure of the Contents to any third party without written consent of Alpha ICT is forbidden.

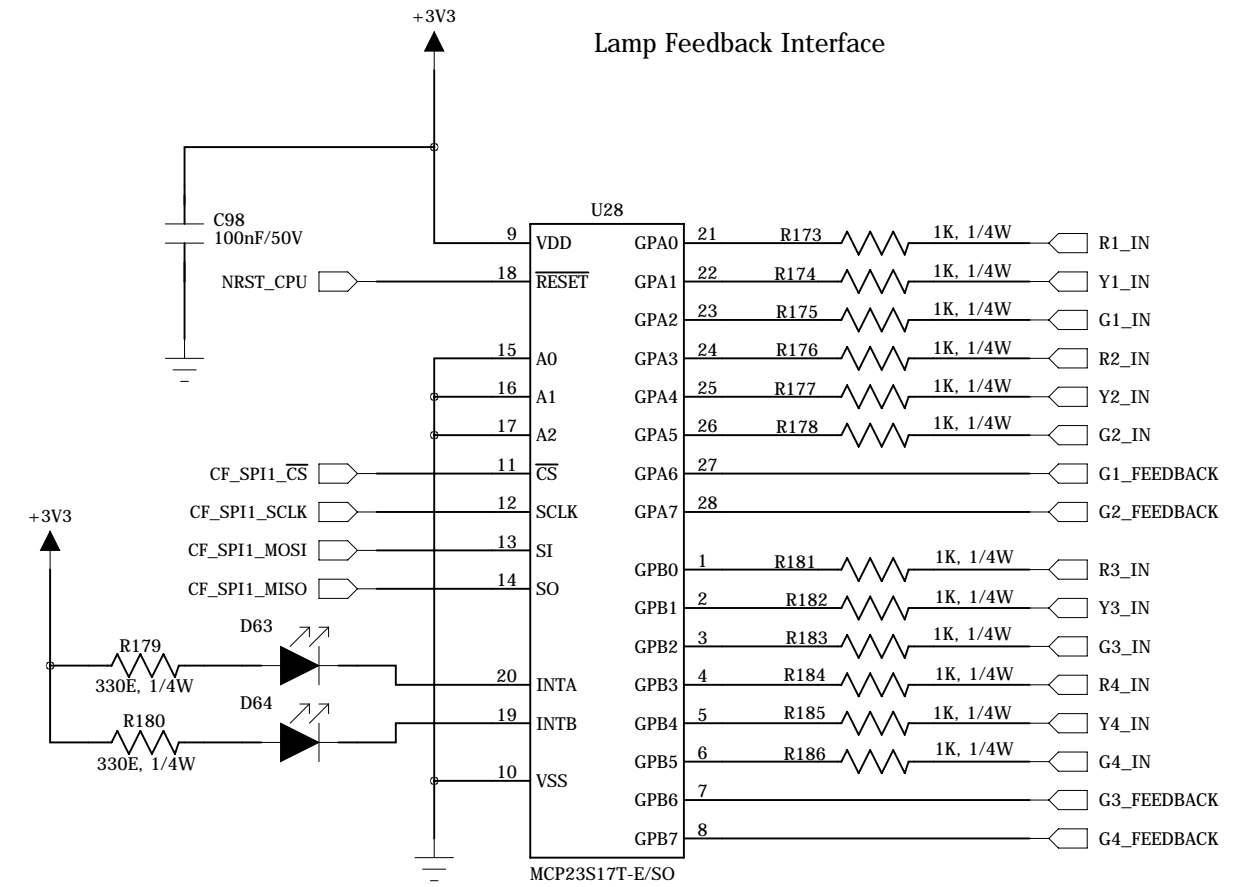
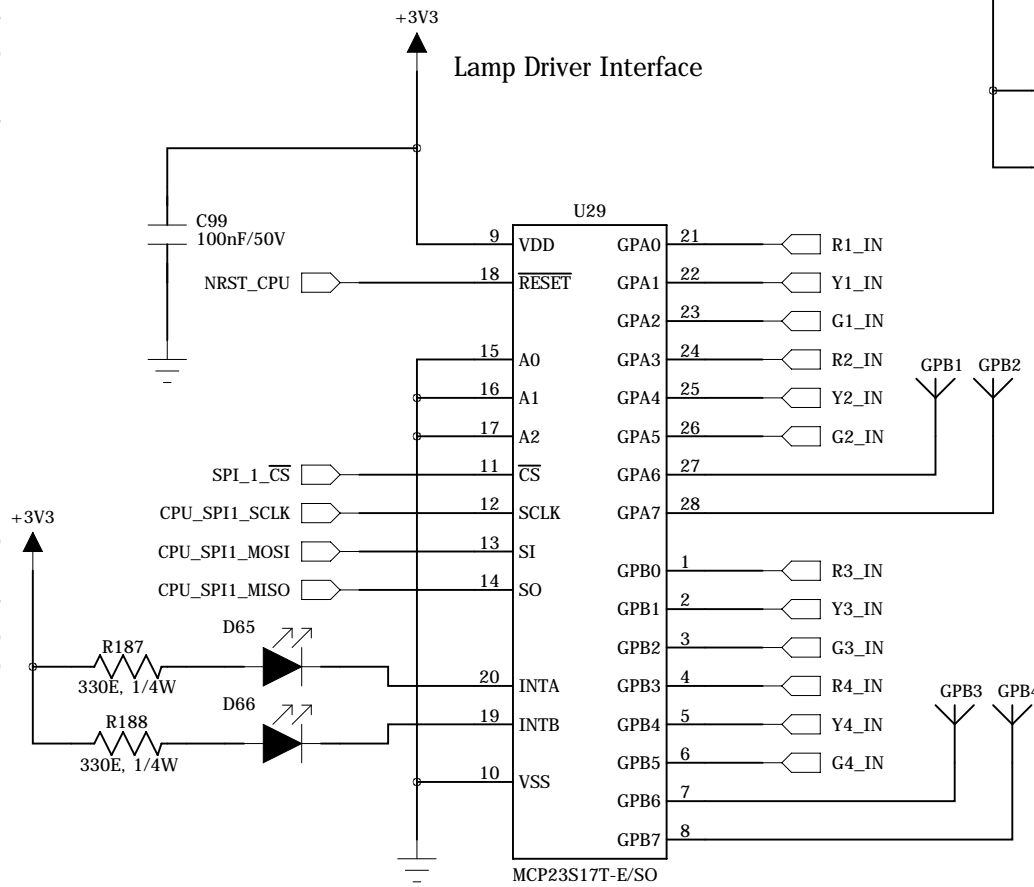
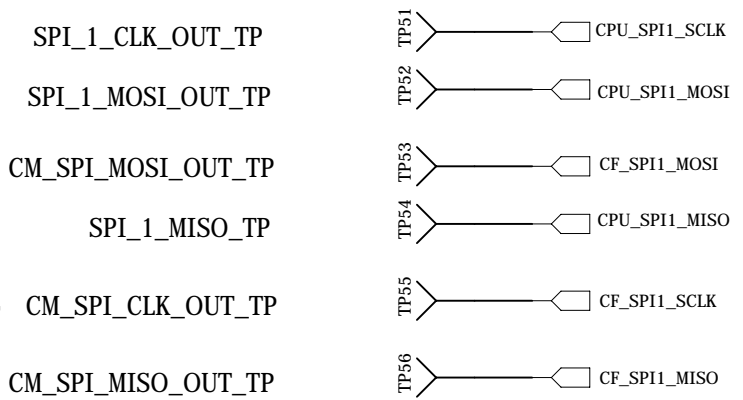
ALPHA ICT LLP			
System : TSA AstroPED			
Sub-system : CPU Card			
Version : 0.3	Date : 07.23.18	Sheet : 22 of 31	
Document Format No.:DSN-18		Document Format Version:V1.0	


12V BUCK TYPE DC TO DC CONVERTER AND ASSOCIATED PARTS

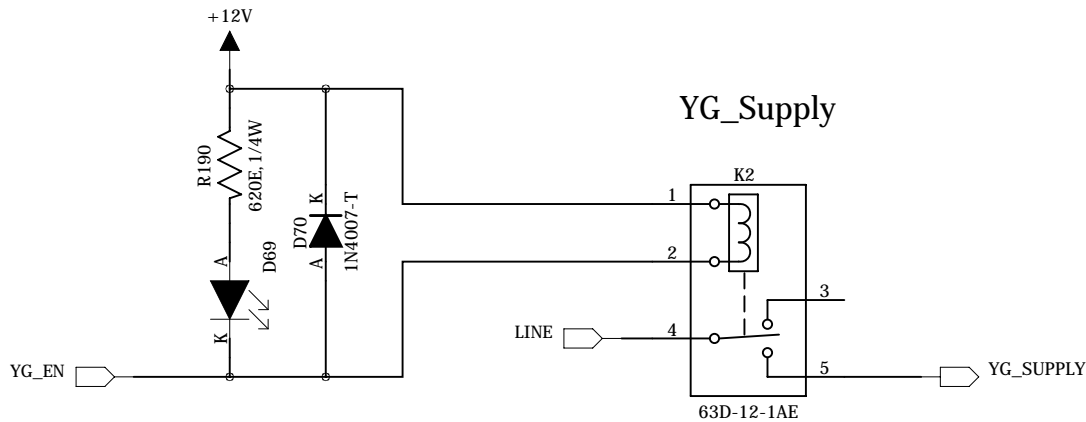
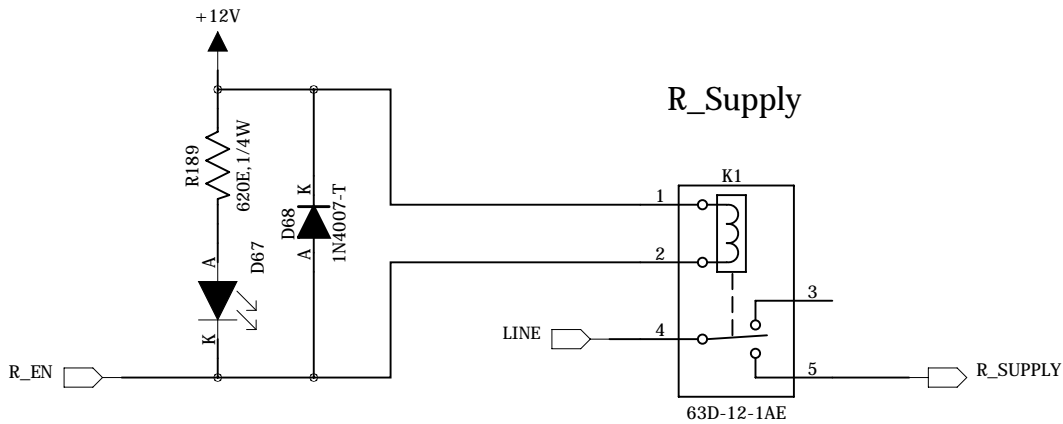


ALPHA ICT LLP			 alpha ict
System : TSA AstroPED			
Sub-system : CPU Card			
Version : 0.3	Date : 07.23.18	Sheet : 23 of 31	
Document Format No.:DSN-18		Document Format Version:V1.0	

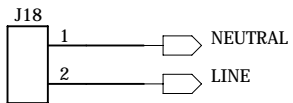
This document is a property of Alpha ICT LLP. Disclosure of the Contents to any third party without written consent of Alpha ICT is forbidden.



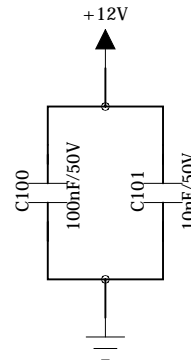
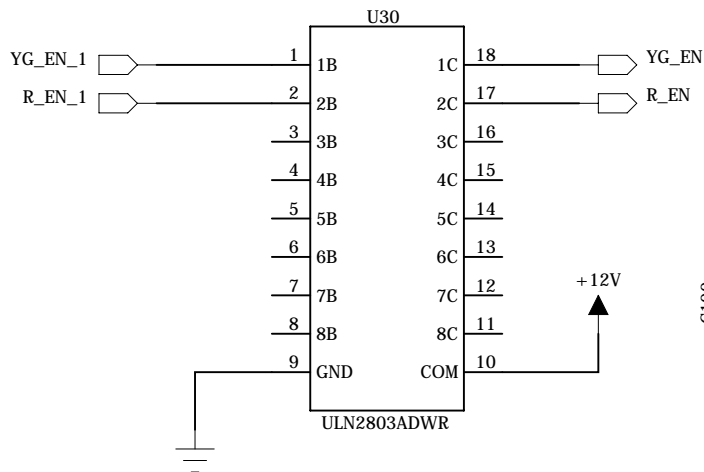
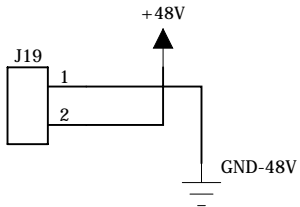
ALPHA ICT LLP			
System : TSA AstroPED			
Sub-system : CPU Card			
Version : 0.3	Date : 07.23.18	Sheet : 24 of 31	
Document Format No.:DSN-18		Document Format Version:V1.0	



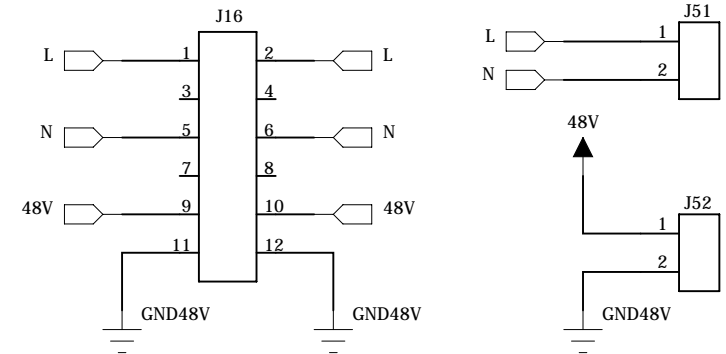
Mains Supply



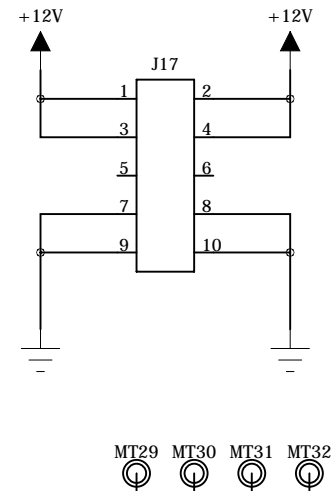
+48V Supply

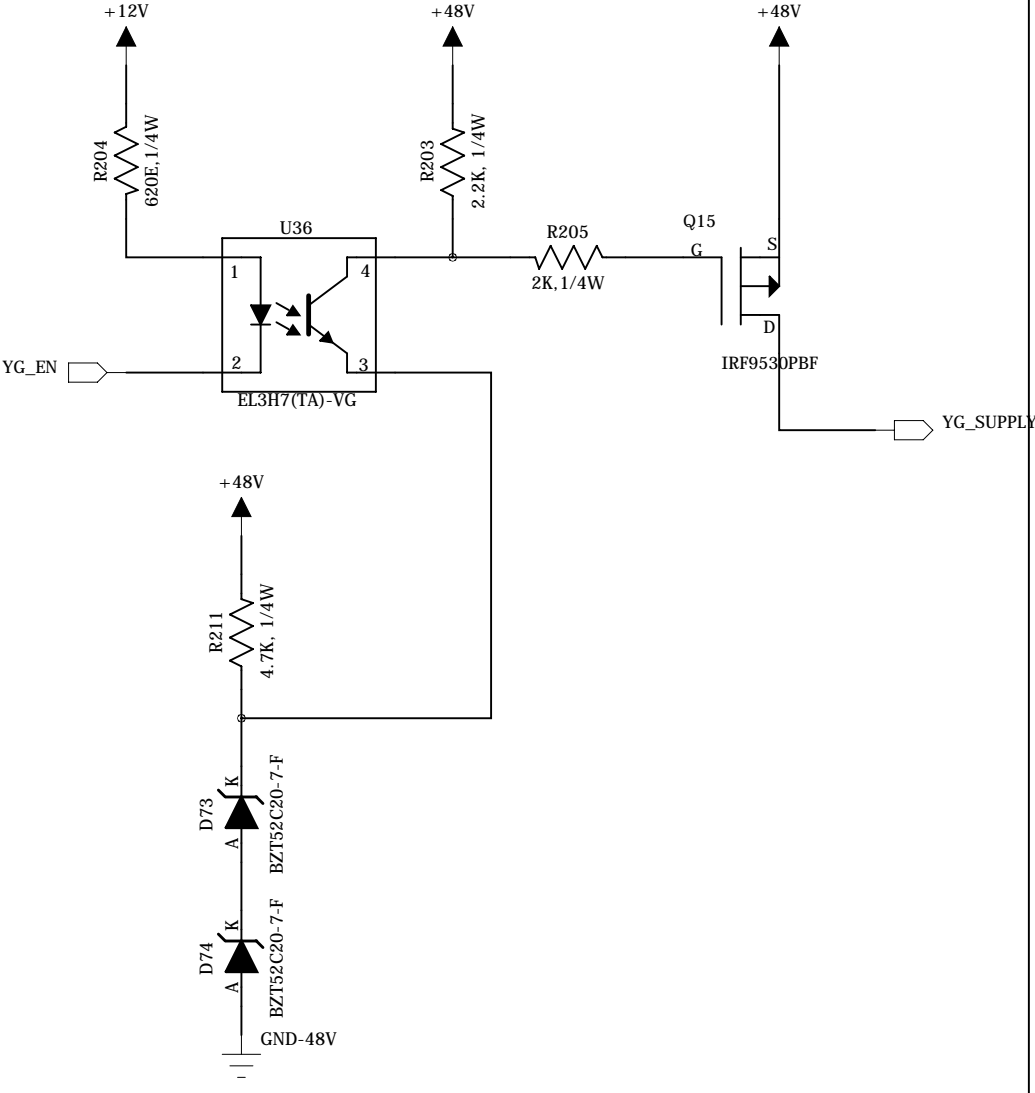
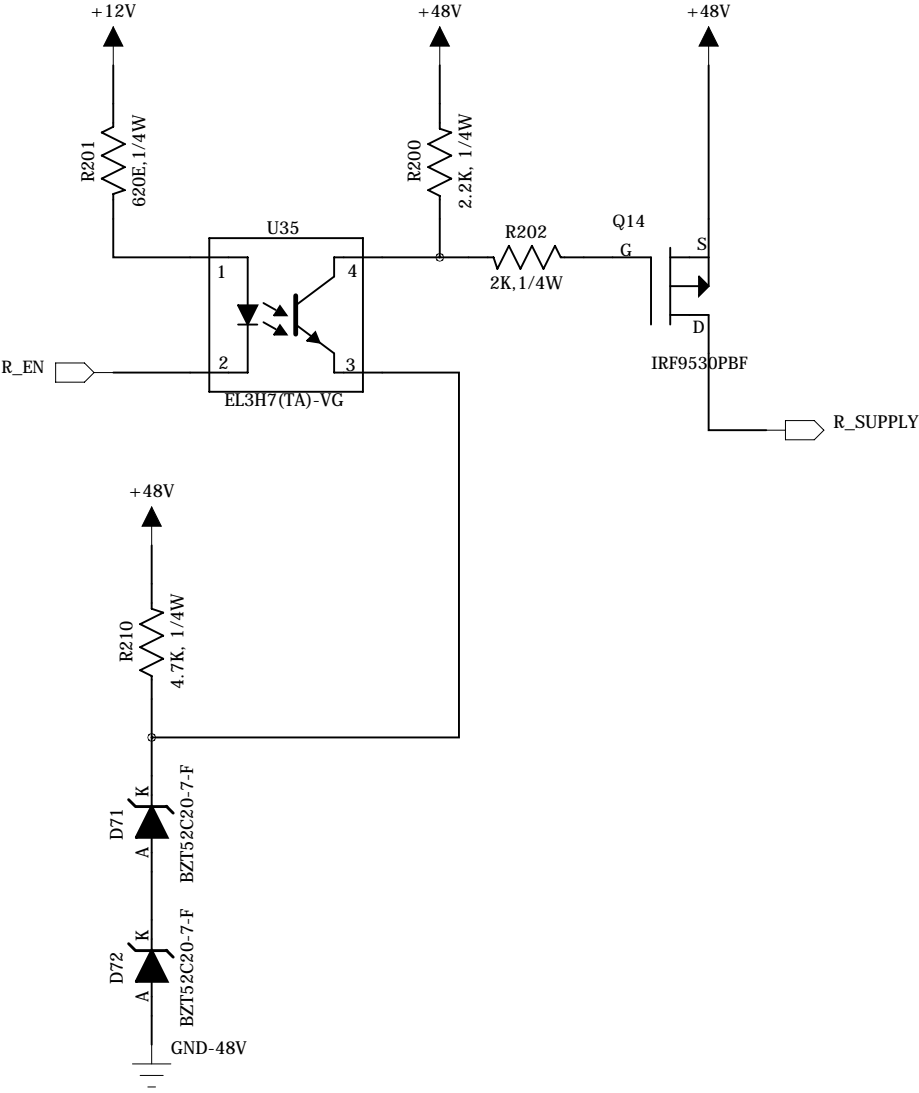


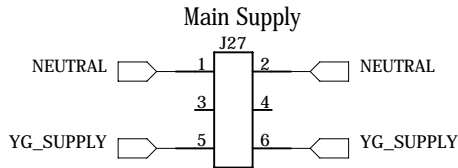
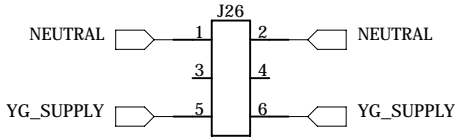
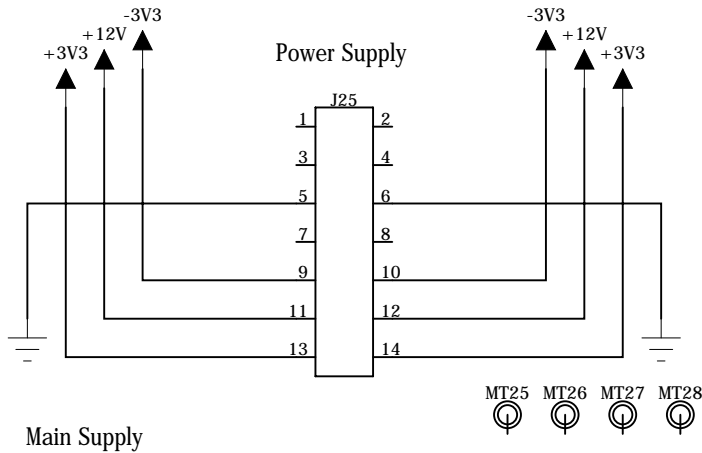
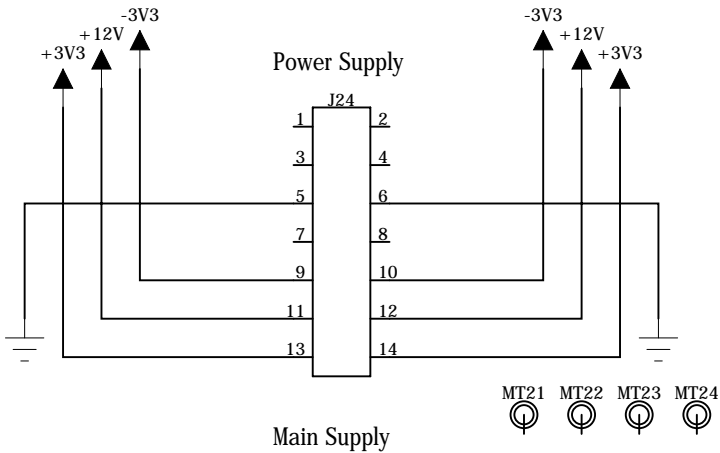
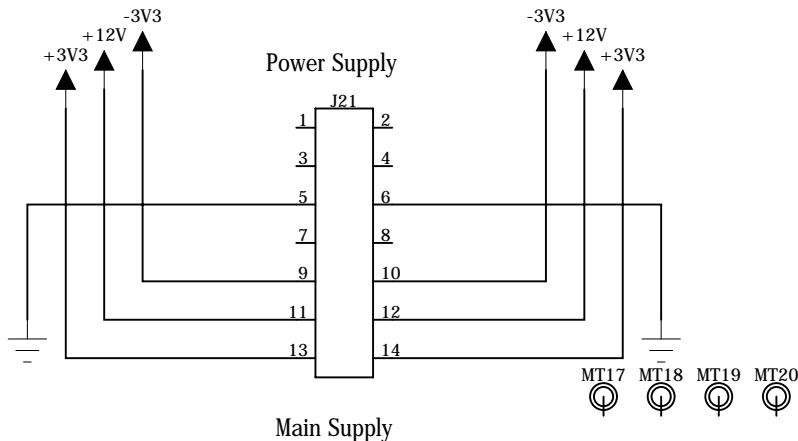
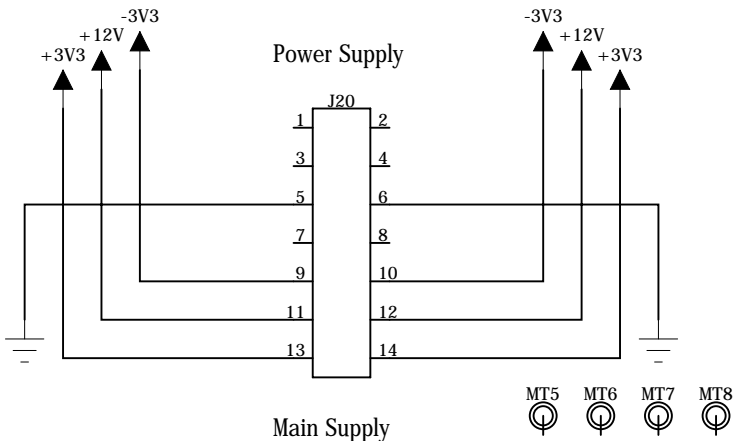
SMPS Mains Connector




SMPS Output Connector



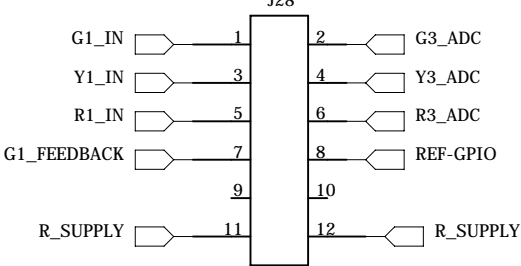




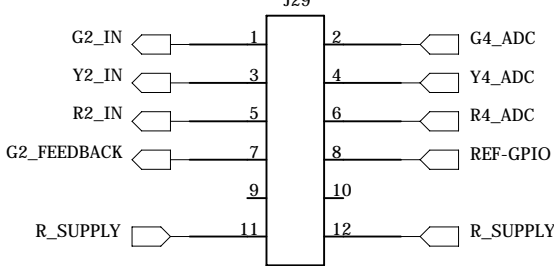
ALPHA ICT LLP			
System : TSA AstroPED			
Sub-system : CPU Card			
Version : 0.3	Date : 07.23.18	Sheet : 27 of 31	
Document Format No.:DSN-18		Document Format Version:V1.0	

This document is a property of Alpha ICT LLP. Disclosure of the Contents to any third party without written consent of Alpha ICT is forbidden.

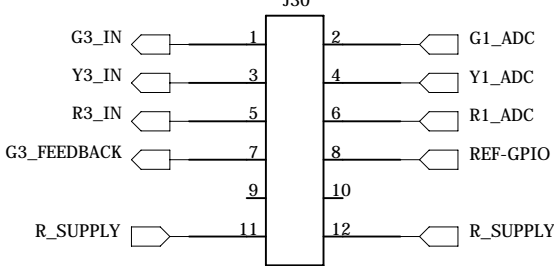
R1Y1G1 Input



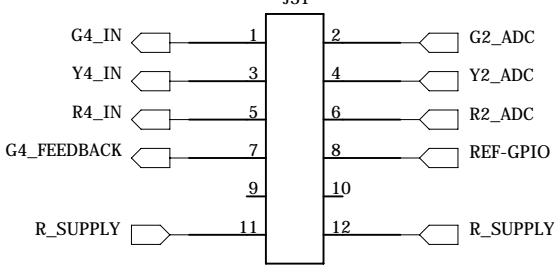
R2Y2G2 Input



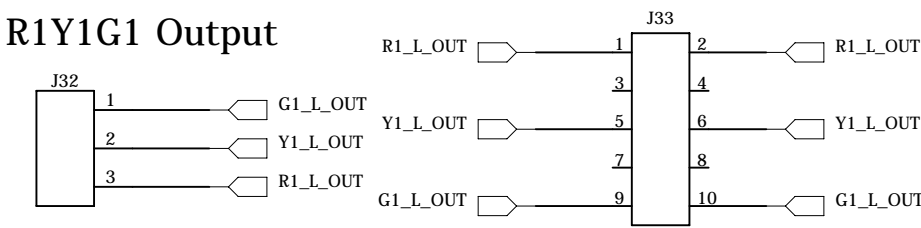
R3Y3G3 Input



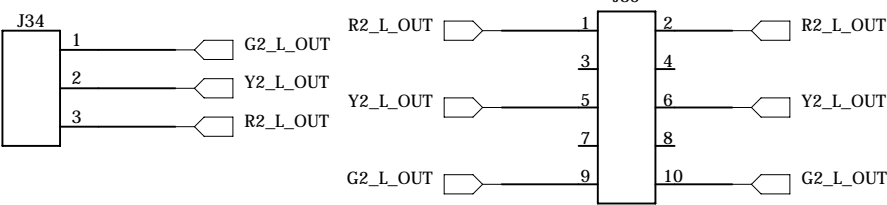
R4Y4G4 Input



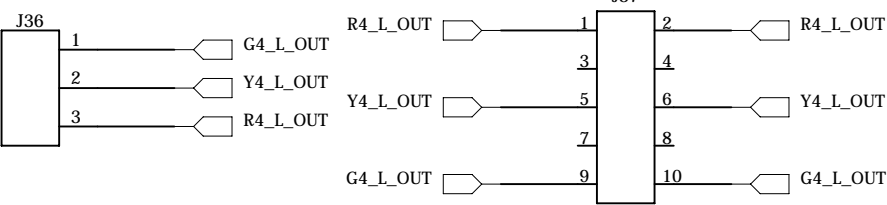
R-Y-G Output



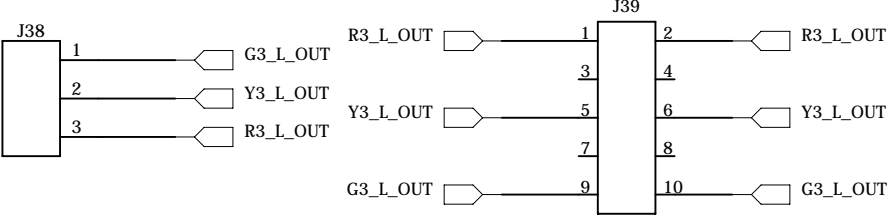
R2Y2G2 Output

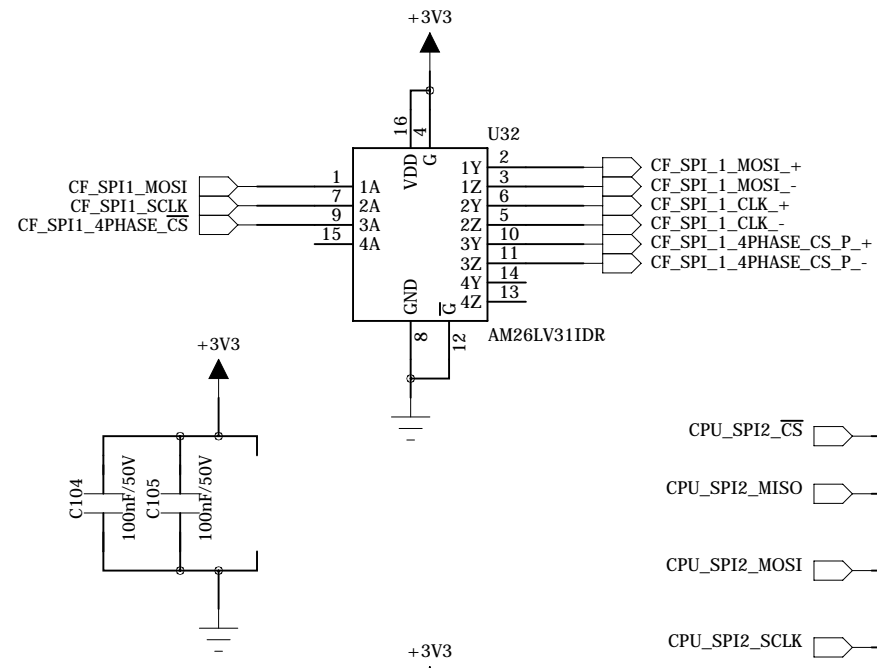
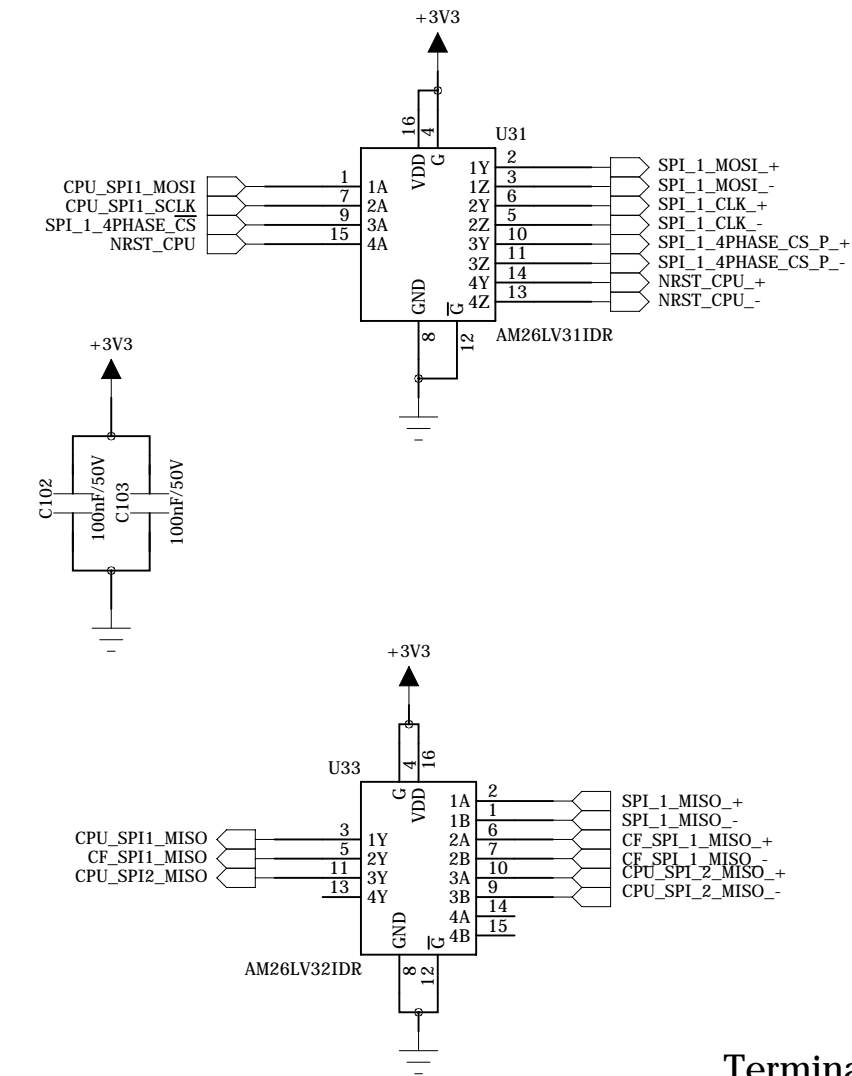


R4Y4G4 Output

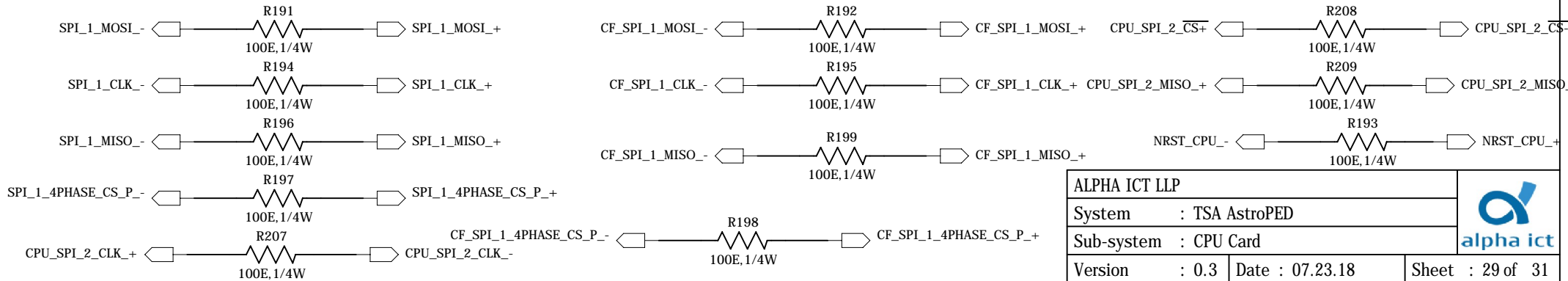


R3Y3G3 Output






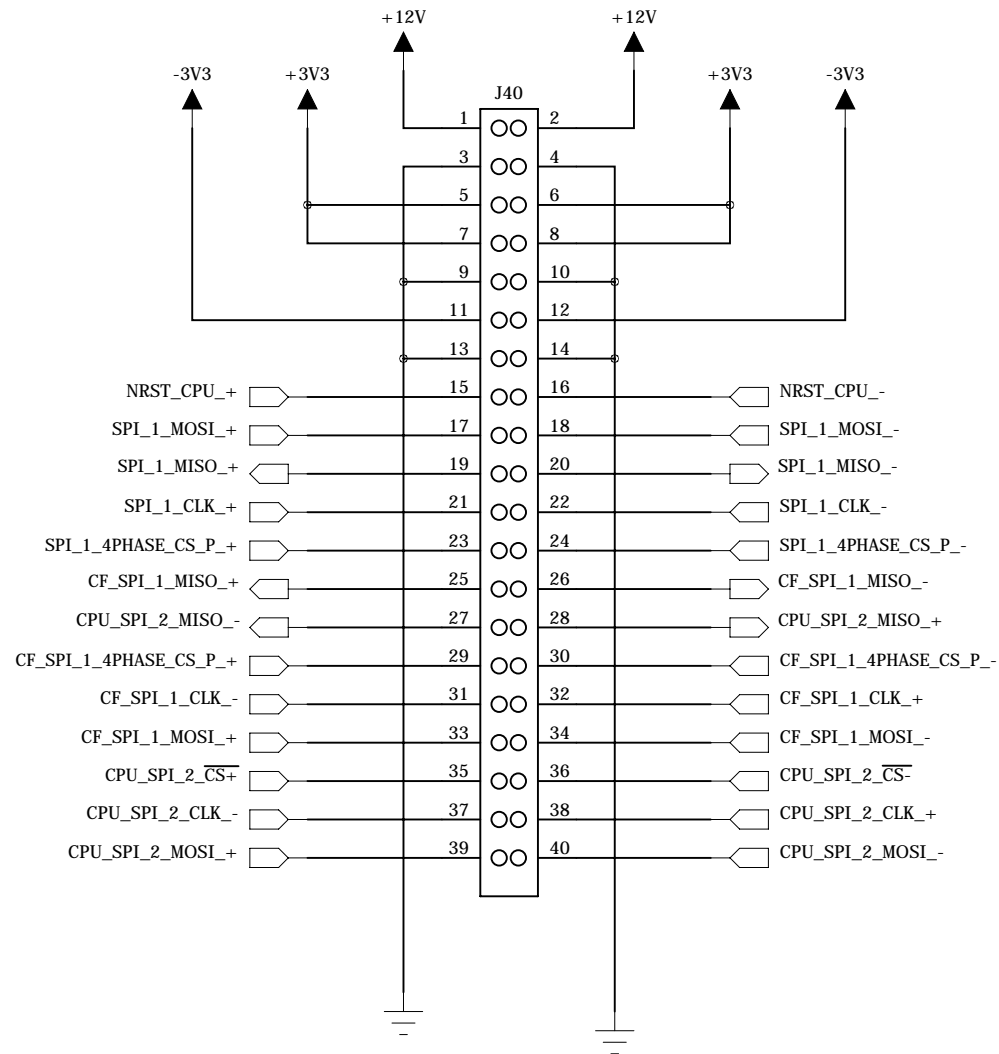
Termination Resistor




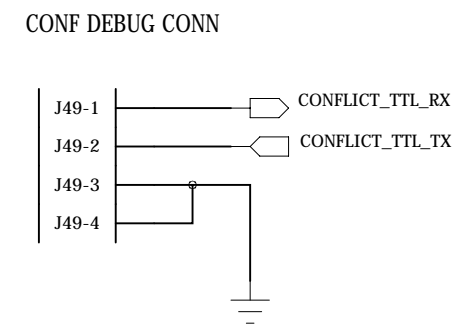
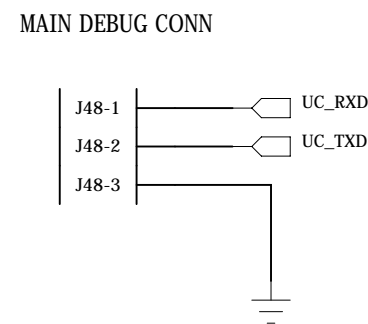
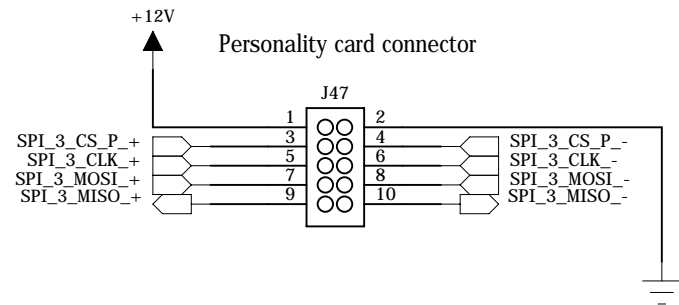
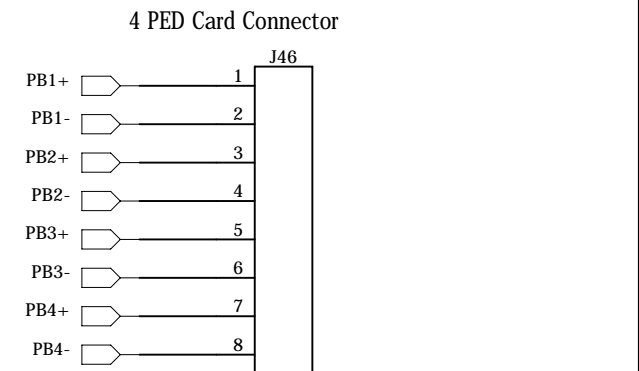
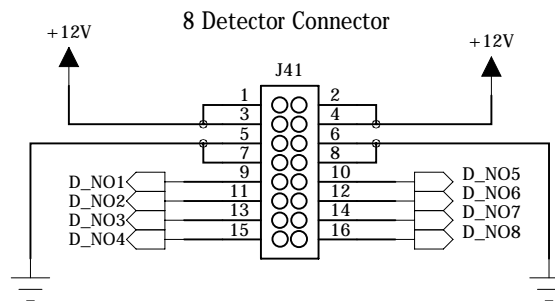
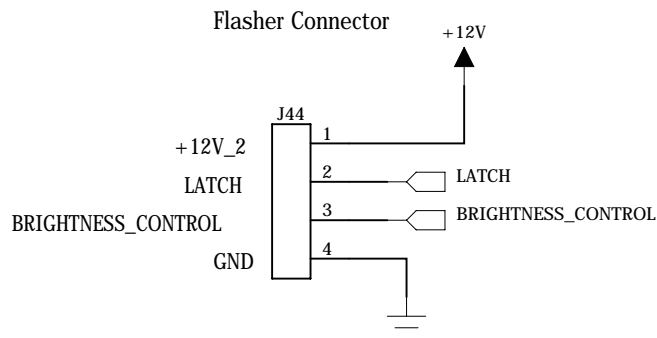
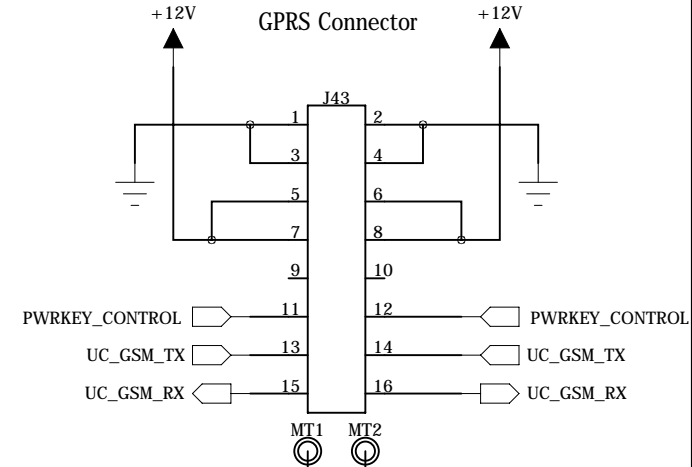
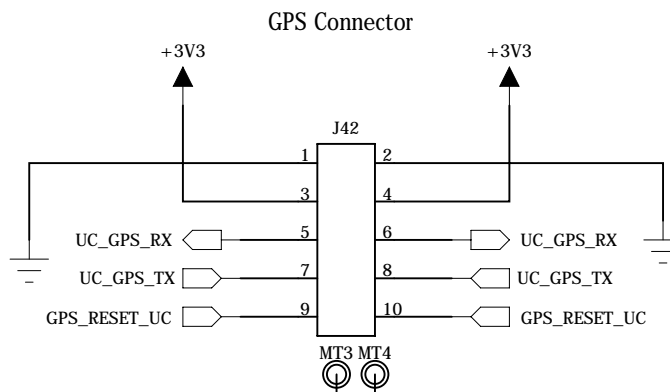
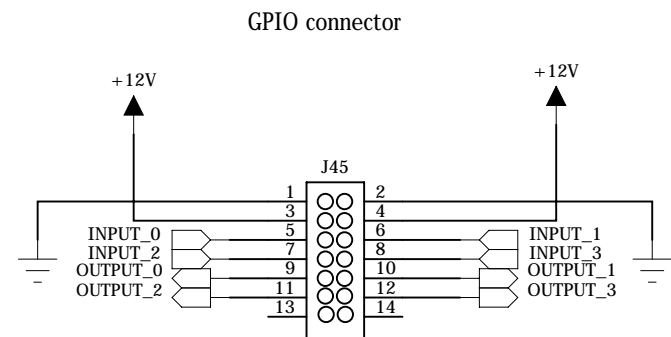
This document is controlled in electronic format only. Any printed copy is up to date only at the time of printing.

ALPHA ICT LLP			
System : TSA AstroPED			
Sub-system : CPU Card			
Version : 0.3	Date : 07.23.18	Sheet : 29 of 31	
Document Format No.:DSN-18		Document Format Version:V1.0	

4 Phase Expansion Connector



ALPHA ICT LLP			
System : TSA AstroPED			
Sub-system : CPU Card			
Version : 0.3	Date : 07.23.18	Sheet : 30 of 31	
Document Format No.:DSN-18		Document Format Version:V1.0	



MT13 MT14 MT15 MT16