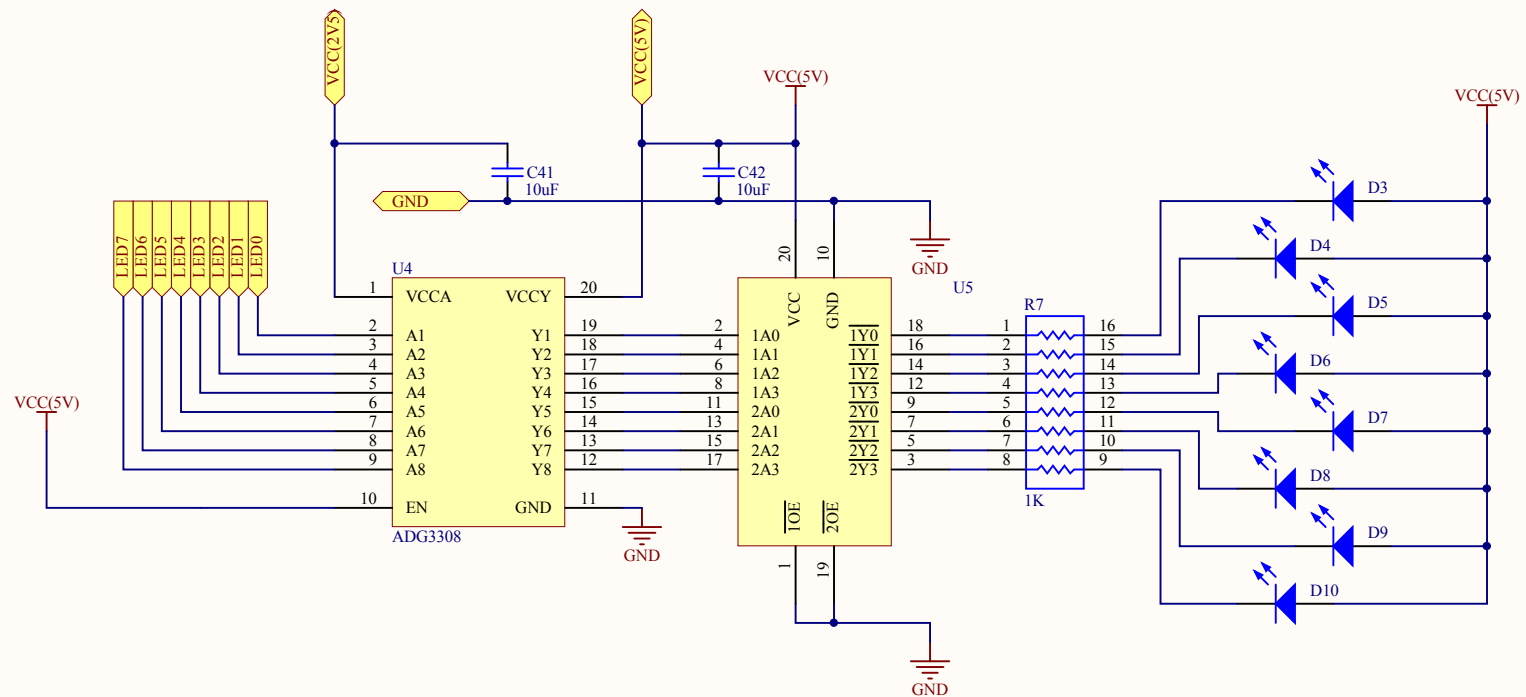
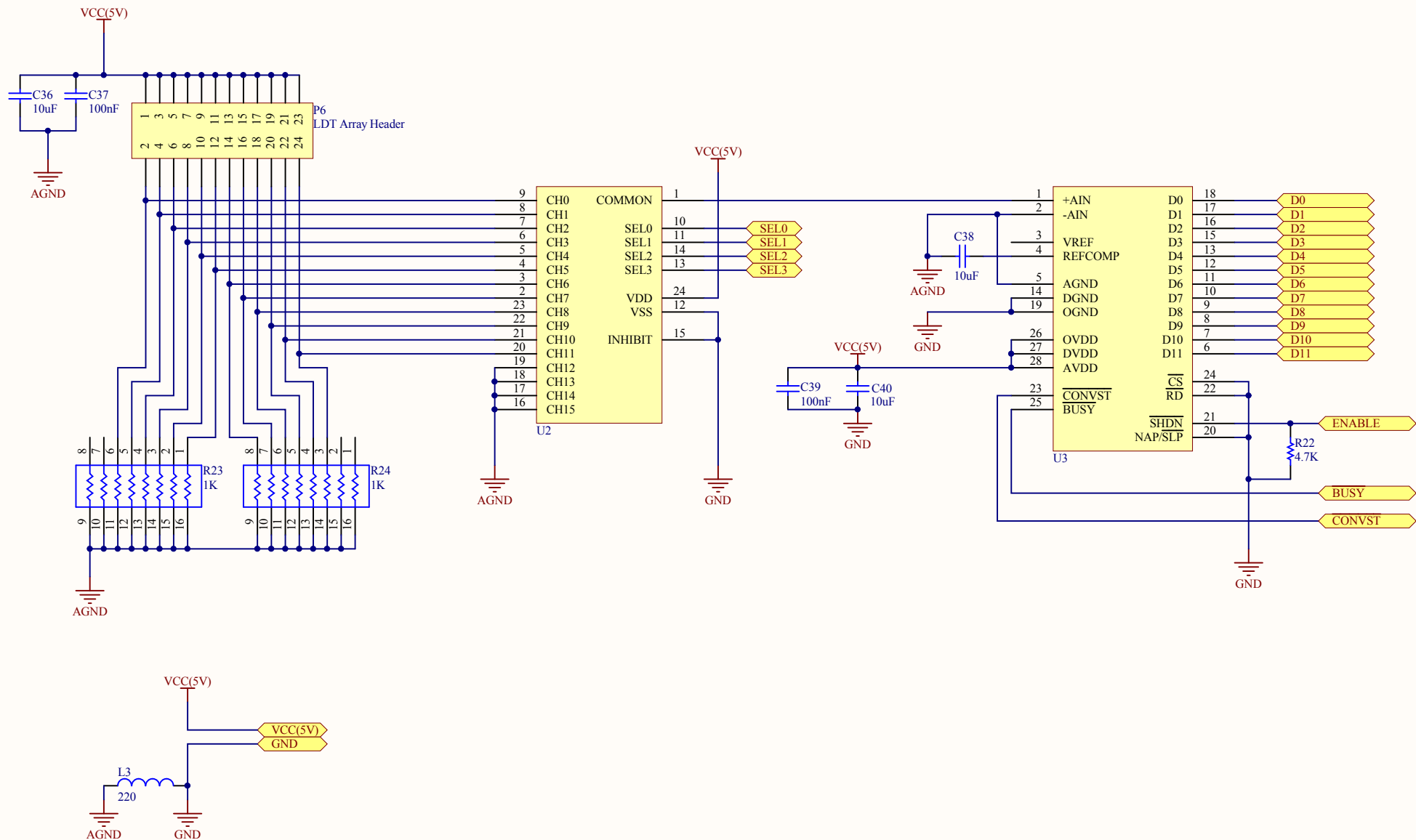


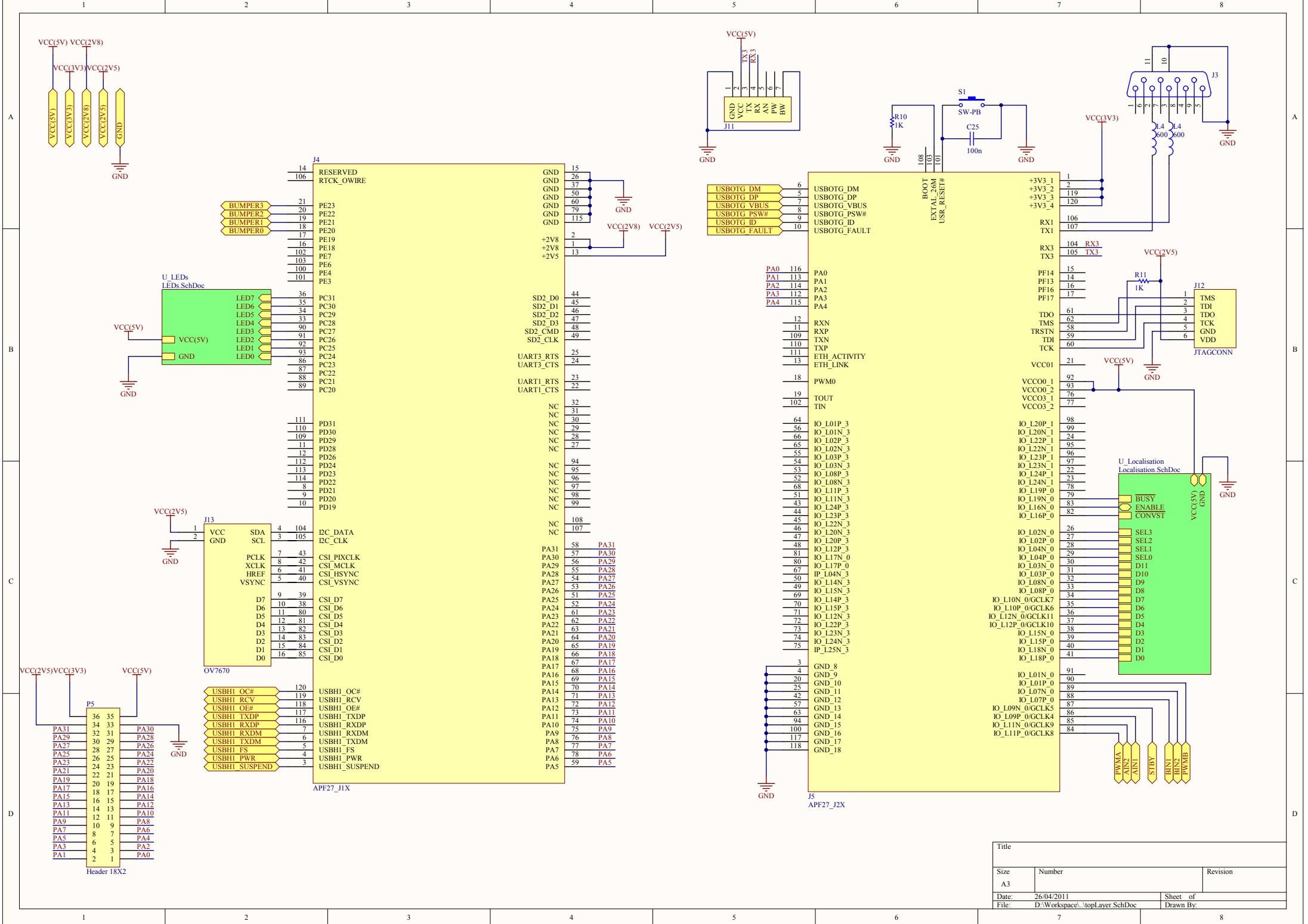
Title		
Size	Number	Revision
A4		
Date:	26/04/2011	Sheet of
File:	D:\Workspace\bottomLayer.SchDoc	Drawn By:



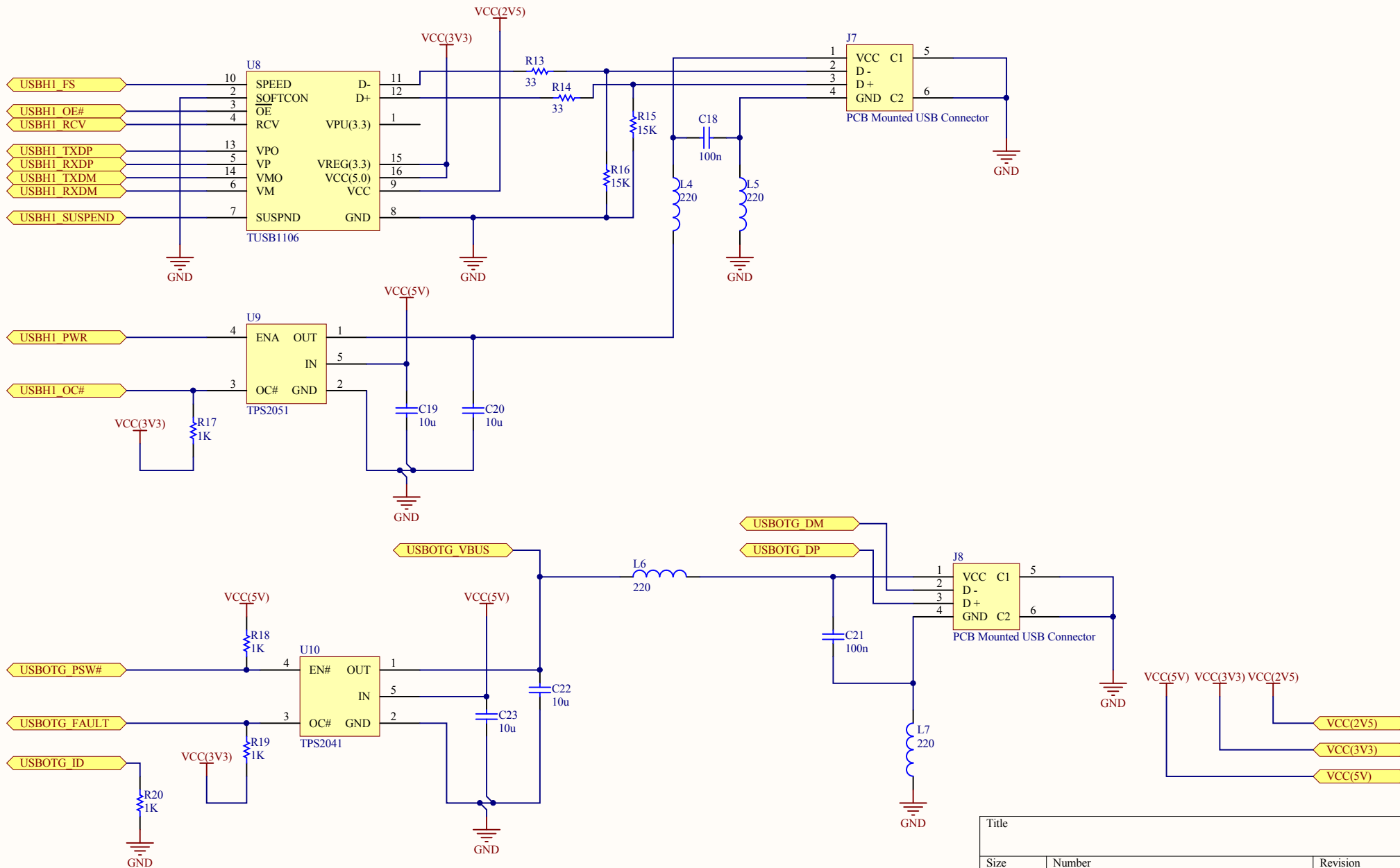
Title		
Size	Number	Revision
A4		
Date:	26/04/2011	Sheet of
File:	D:\Workspace\LEDs.SchDoc	Drawn By:



Title		
Size	Number	Revision
A4		
Date:	26/04/2011	Sheet of
File:	D:\Workspace\Localisation.SchDoc	Drawn By:



Title		
Size	Number	Revision
A3		
Date:	26/04/2011	Sheet of
File:	D:\Workspace\...\topLayer.SchDoc	Drawn By:



Title		
Size	Number	Revision
A4		
Date:	26/04/2011	Sheet of
File:	D:\Workspace\USB.SchDoc	Drawn By:

Bill of Materials

Bill of Materials For Project [swarmEBv2.PrjPCB] (No PCB Document Selected)

Source Data From: swarmEBv2.PrjPCB
Project: swarmEBv2.PrjPCB
Variant: None

Creation Date: 26/04/2011 1:11:33 PM
Print Date: 40659 40659.54982

Footprint	Comment	LibRef	Designator	Description	Quantity		
1206PADS	10u	Cap	C1, C2, C3, C8, C10, C12, C14, C16, C19, C20, C22, C23, C24	Capacitor	13		
1206PADS	100n	Cap	C4, C5, C6, C7, C9, C11, C13, C15, C17, C18, C21, C25	Capacitor	12		
RAD-0.3	0.01uF	Cap	C26, C31	Capacitor	2		
RAD-0.3	3nF	Cap	C27	Capacitor	1		
CAPR5-4X5	22uF	Cap2	C28	Capacitor	1		
RAD-0.3	100nF	Cap	C29, C34	Capacitor	2		
CAPR5-4X5	120uF	Cap2	C30	Capacitor	1		
RAD-0.3	4nF	Cap	C32	Capacitor	1		
CAPR5-4X5	100uF	Cap2	C33, C35	Capacitor	2		
1206PADS	10uF	Cap	C36, C38, C40, C41, C42	Capacitor	5		
1206PADS	100nF	Cap	C37, C39	Capacitor	2		
DSO-C2/X2.3		D Schottky	D1, D2	Schottky Diode	2		
LED	LED3	LED3	D3, D4, D5, D6, D7, D8, D9, D10	Typical BLUE SiC LED	8		
BMP5MPHDR	TSCONN	TSCONN	J1, J2, J6, J9	Normally Open Touch Sensor Interrupt	4		
DSUB1.385-2H9	D Connector 9	D Connector 9	J3	Receptacle Assembly, 9 Position, Right Angle	1		
FX8-120S-SV(21)	APF27_J1X	APF27_J1X	J4	Connector for APF27	1		
FX8-120S-SV(21)	APF27_J2X	APF27_J2X	J5	Connector for APF27	1		
USBCONN	PCB Mounted USB Connector	USBCONN	J7, J8	PCB Mounted USB Connector	2		
MOTORCONN	Motor Header	MTRCONN	J10	2CH Motor Header with 100mil spacing	1		
RFCONN	RFCONN	RFCONN	J11		1		
JTAGCONN	JTAGCONN	JTAGCONN	J12	Backup JTAG Connection	1		
HDR2X8	OV7670	OV7670_HDR	J13	Header for the OV7670 Camera Module	1		
PWRJACK	Power Jack	PWRCONN	J14	Power Jack	1		
INDC1005AL	22uH	Inductor	L1	Inductor	1		
INDC1005AL	47uH	Inductor	L2	Inductor	1		
1206PADS	220	Inductor	L3, L4, L5, L6, L7	Ferrite Bead	5		
32POS_HDR	HDR36	HDR36	P1, P2, P3, P4		4		
HDR2X18	Header 18X2	Header 18X2	P5	Header, 18-Pin, Dual row	1		
LDTAHDR	LDT Array Header	Header 12X2	P6	Header, 12-Pin, Dual row	1		
1206PADS	787	Res1	R1, R2, R3, R4	Resistor	4		
1206PADS	2.43K	Res1	R5, R6, R8, R9	Resistor	4		
DIP-16	1K	Res Pack3	R7	Isolated Resistor Network	1		
1206PADS	1K	Res1	R10, R11, R17, R18, R19, R20	Resistor	6		
AXIAL-0.3	9.76k	Res1	R12	Resistor	1		
1206PADS	33	Res1	R13, R14	Resistor	2		
1206PADS	15K	Res1	R15, R16	Resistor	2		
AXIAL-0.3	24.9k	Res1	R21	Resistor	1		
1206PADS	4.7K	Res1	R22	Resistor	1		
SOIC127P60	1K	Res Pack3	R23, R24	Isolated Resistor Network	2		
0-16N							
SPST-2	SW-PB	SW-PB	S1	Switch	1		
TSSOP-65P-24M	TB6612FNG	TB6612FNG	U1	2CH Motor Driver	1		
SOIC127P10	MC14067B	MC14067B	U2	16-1 Analog Multiplexer	1		
30-24BM							
SOIC127P10	LTC1415	LTC1415	U3	ADC Parallel 12 Bit, 1.25Msps	1		
30-28BM							
TSOP65P640	ADG3308	ADG3308	U4	Level Shifter	1		
20BM							
SOIC127P10	CD74AC240M	CD74AC240M	U5	Inv Octal Buffer	1		
30-20M							
TS7B_N	LM2673S-5.0	LM2673S-5.0	U6	3A Step-Down Voltage Regulator with Adjustable Current Limit	1		
TS7B_N	LM2673S-3.3	LM2673S-3.3	U7	3A Step-Down Voltage Regulator with Adjustable Current Limit	1		
SOP65P640-16M	TUSB1106	TUSB1106	U8	USB Transceiver	1		
SOT23-5AM	TPS2051	TPS2051	U9	USB Power Reg	1		
SOT23-5AM	TPS2041	TPS2041	U10	USB Power Reg	1		
					114		
Approved		Notes					