

A

B

C

D

2

3

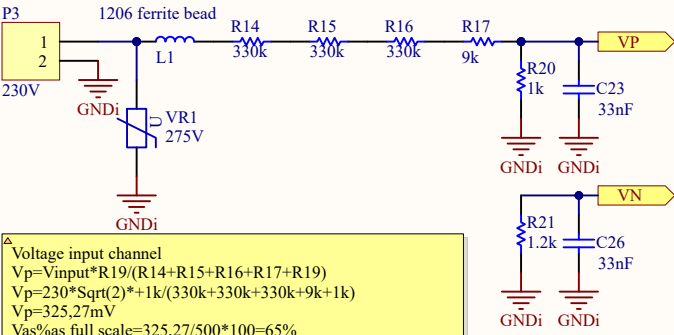
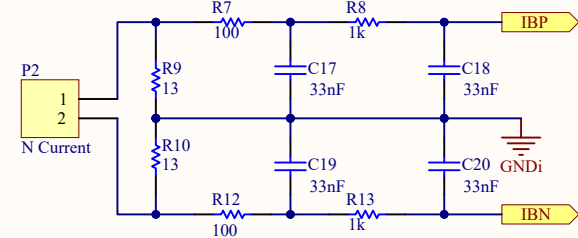
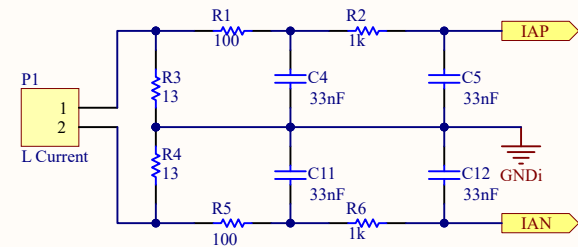
4

A

B

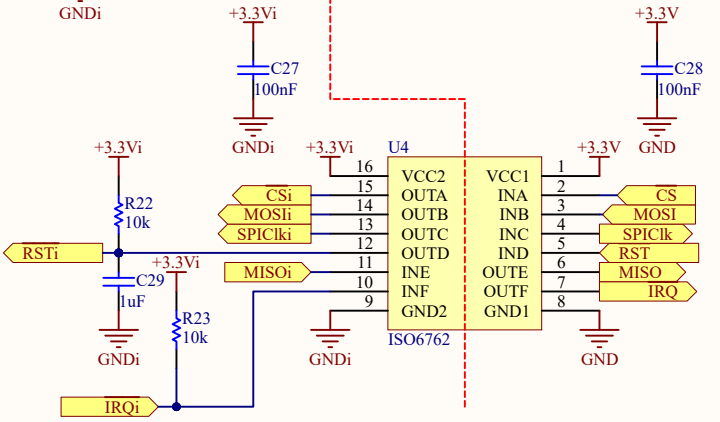
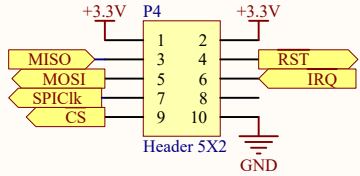
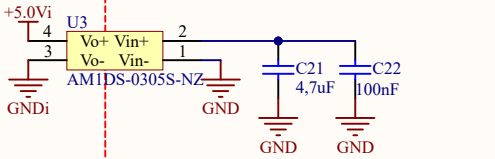
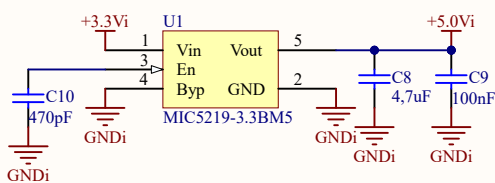
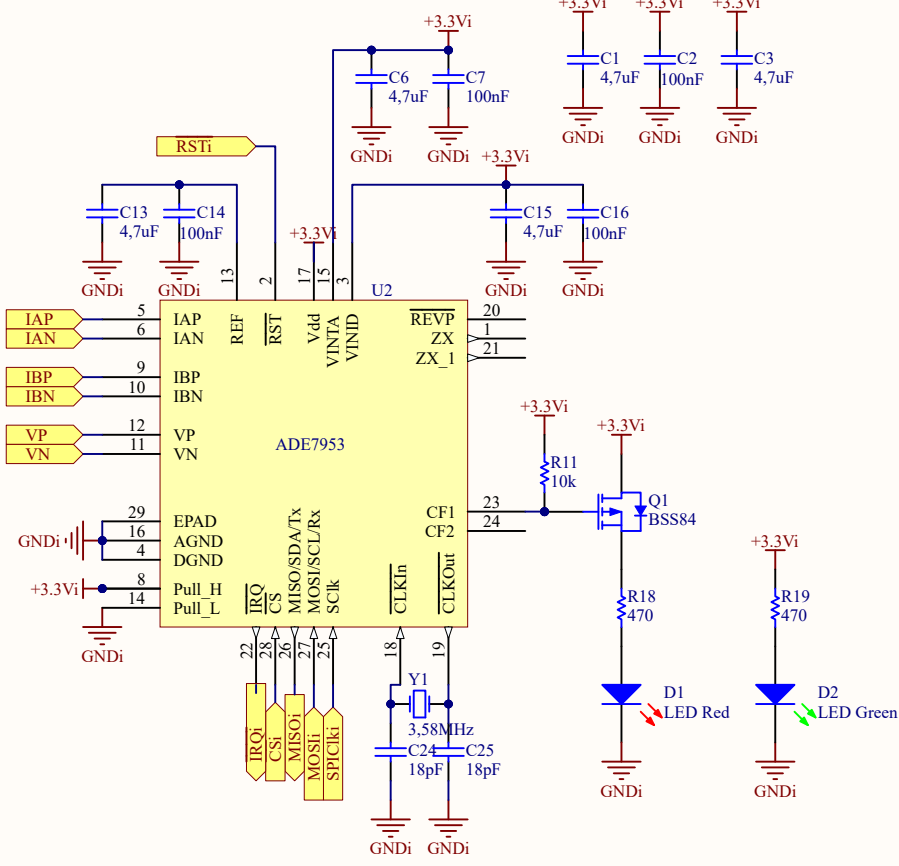
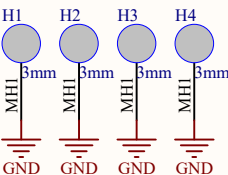
C

D



Voltage input channel  
 $V_p = V_{input} \cdot R_{19} / (R_{14} + R_{15} + R_{16} + R_{17} + R_{19})$   
 $V_p = 230 \cdot \sqrt{2} \cdot 1k / (330k + 330k + 330k + 9k + 1k)$   
 $V_p = 325.27mV$   
 $V_{as\%as\ full\ scale} = 325.27 / 500 \cdot 100 = 65\%$   
R14-R16 SMD size 1206

Current input channel  
CT 1:2500 Rload 2x13 Ohm, I=16A  
 $I_{sec} = 16 / 2500 = 6.4mA$   
 $U = R \cdot I = 2 \cdot 13 \cdot 0.0064 = 0.1664V$   
Use PGA gain 2  
 $I_{as\%as\ full\ scale} = 2 \cdot 0.1664 / 0.5 \cdot 100 = 66.56\%$



Title		
Size	Number	Revision
A4		
Date:	3.29.2023	Sheet of
File:	G:\Works\...\ADE7953.SchDoc	Drawn By:

1

2

3

4