

Qube Solutions UG (haftungsbeschränkt)
Luitgardweg 18, DE-71083 Herrenberg

TITLE: PiXtend mit CC

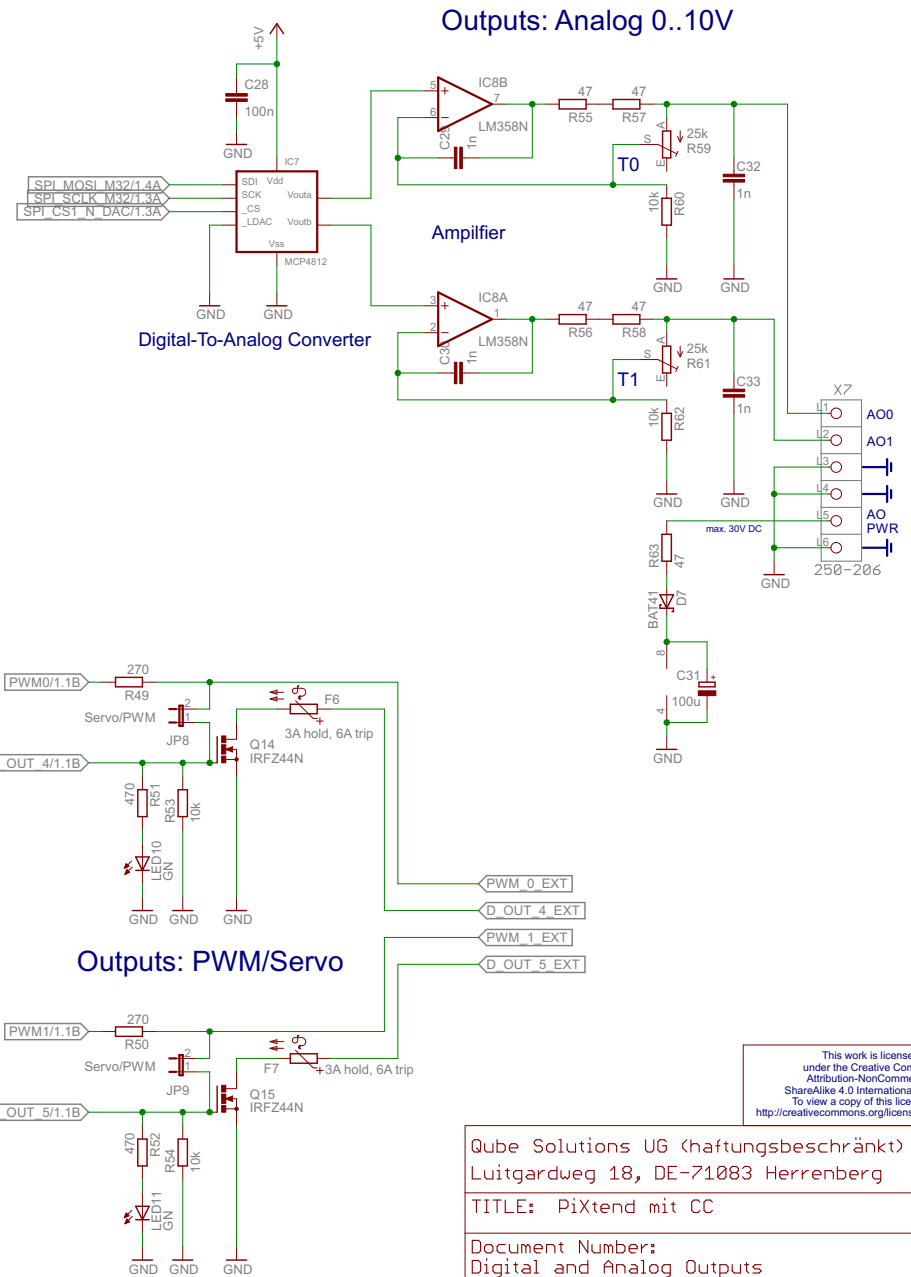
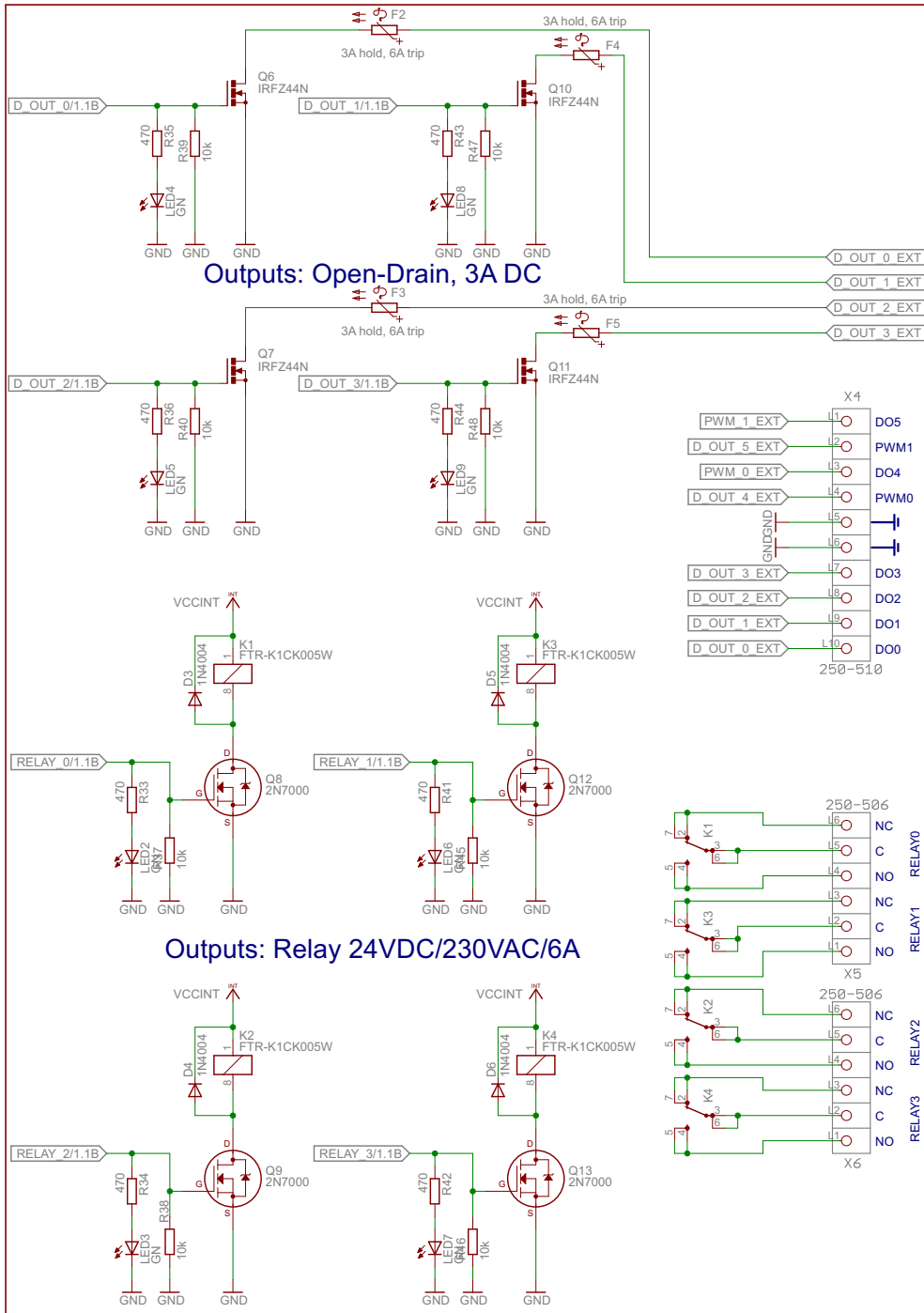
Document Number: PiXtend Controller
Communication, RTC, Level Conversion

REV:
v1.2

Date: 26.10.2014 20:10:20

Sheet: 1/3

This work is licensed
under the Creative Commons
Attribution-NonCommercial-
ShareAlike 4.0 International License.
To view a copy of this license, visit
<http://creativecommons.org/licenses/by-nc-sa/4.0/>



This work is licensed under the Creative Commons Attribution-NonCommercial-ShareAlike 4.0 International License. To view a copy of this license, visit <http://creativecommons.org/licenses/by-nc-sa/4.0/>

Qube Solutions UG (haftungsbeschränkt)
Luitgardweg 18, DE-71083 Herrenberg

TITLE: PiXtend mit CC

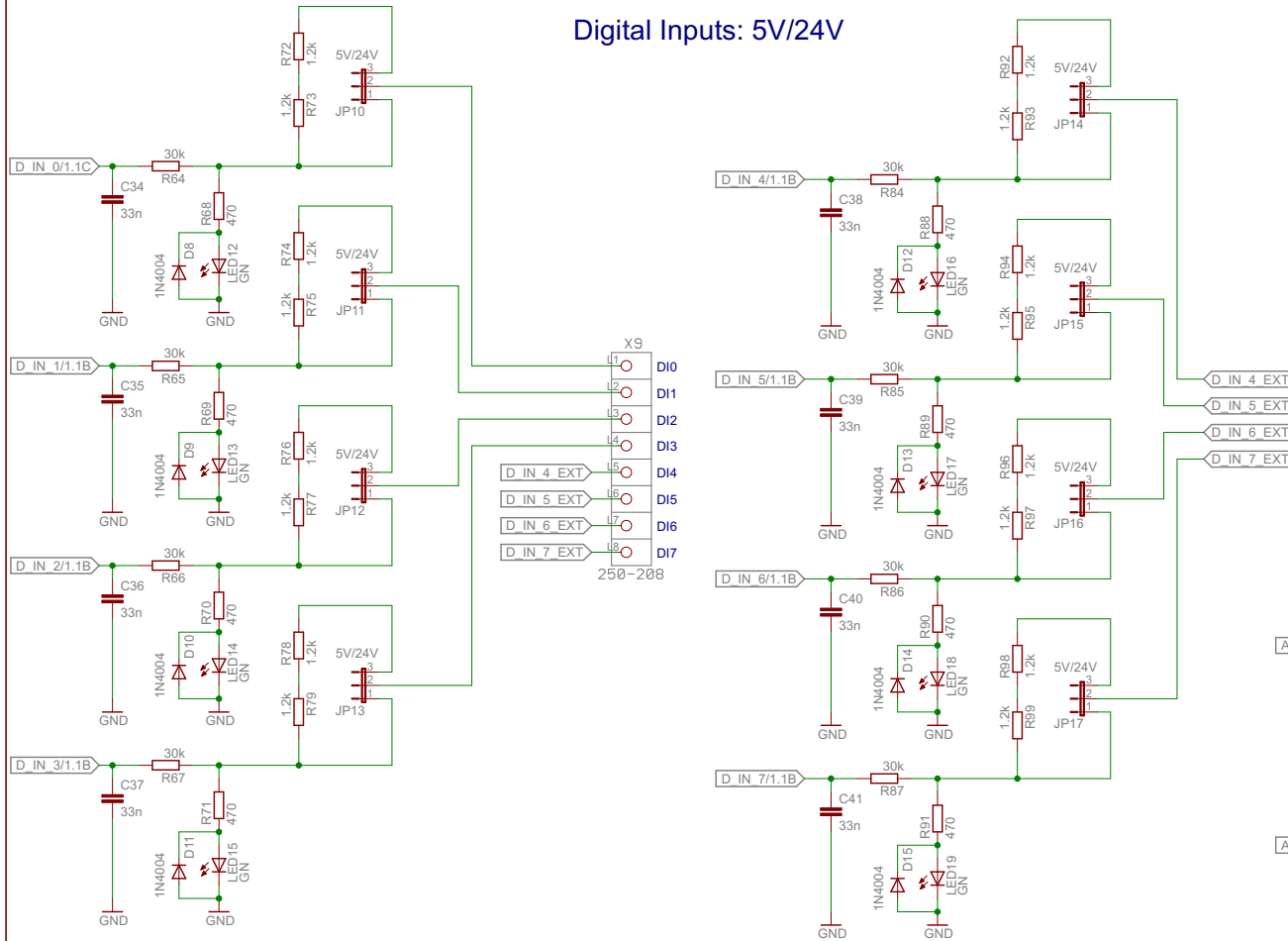
Document Number:
Digital and Analog Outputs

REV:
v1.2

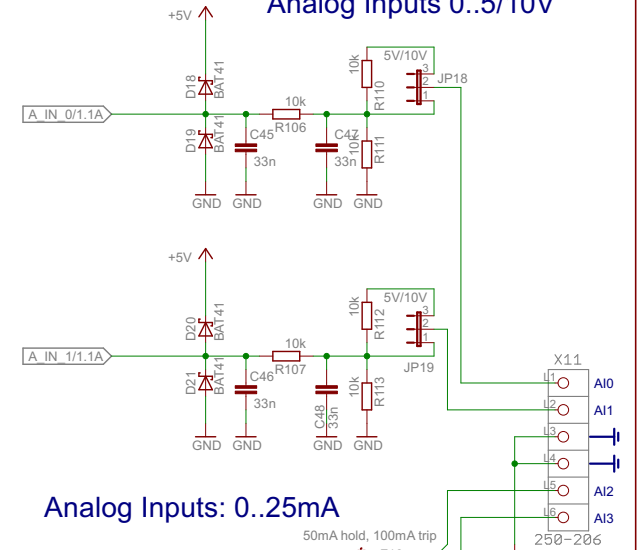
Date: 26.10.2014 20:10:20

Sheet: 2/3

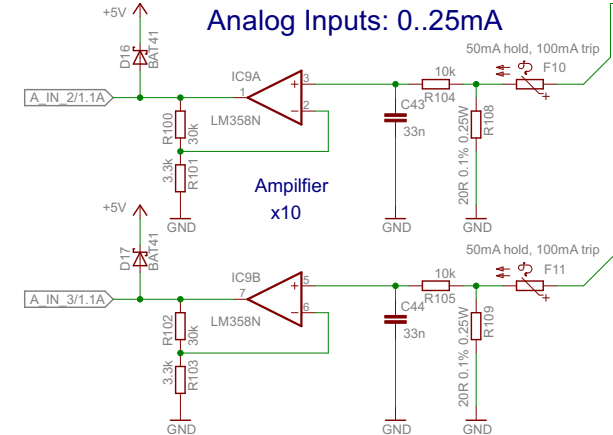
Digital Inputs: 5V/24V



Analog Inputs 0.5/10V



Analog Inputs: 0..25mA



7 - 9V
rectified VCC

Amplifier
Powerbox

This work is licensed
under the Creative Commons
Attribution-NonCommercial-
ShareAlike 4.0 International License.
To view a copy of this license, visit
<http://creativecommons.org/licenses/by-nc-sa/4.0/>

Qube Solutions UG (haftungsbeschränkt)
Luitgardweg 18, DE-71083 Herrenberg

TITLE: PiXtend mit CC

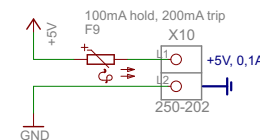
Document Number:
Digital and Analog Inputs, GPIOs

REV:
v1.2

Date: 26.10.2014 20:10:20

Sheet: 3/3

+5V Supply Output for
digital and analog Sensors / Switches



DHT11/22 Temperature & Humidity Sensors / 5V-GPIO 0-3

