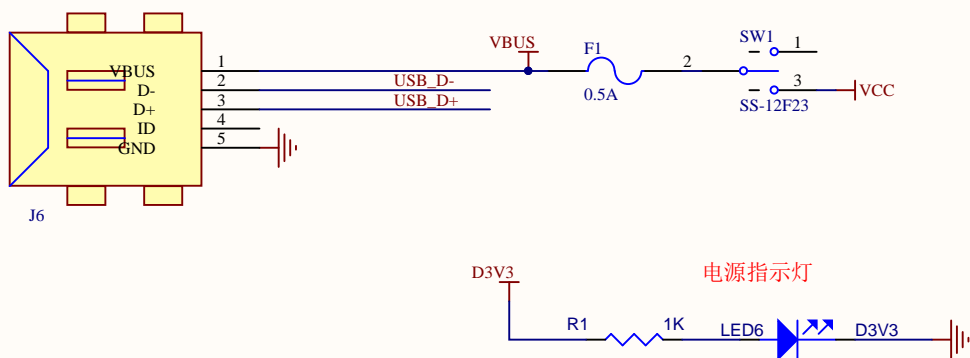
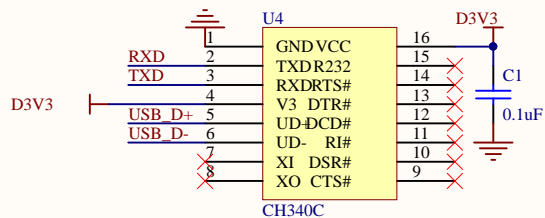


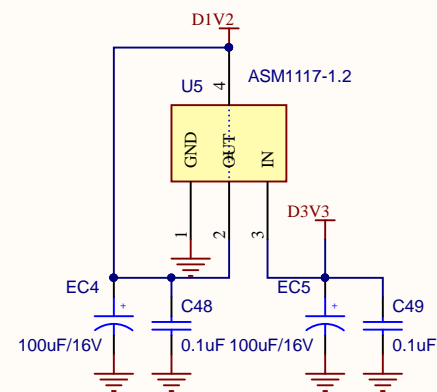
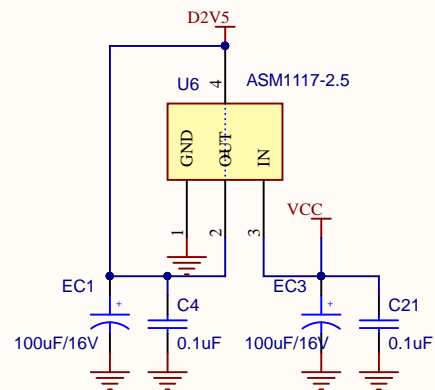
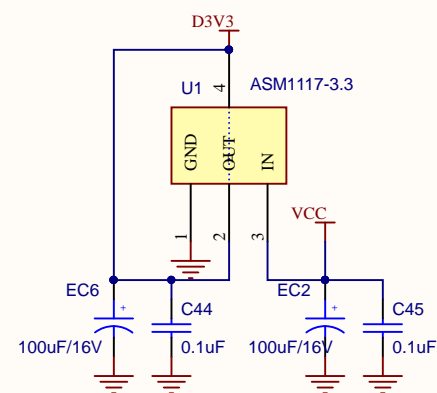
## USB接口



## USB转串口

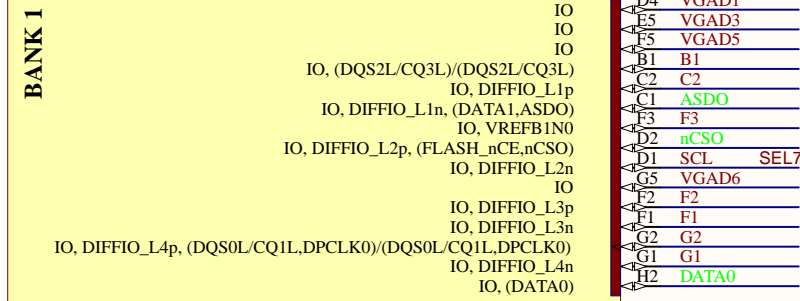


## 三路电源



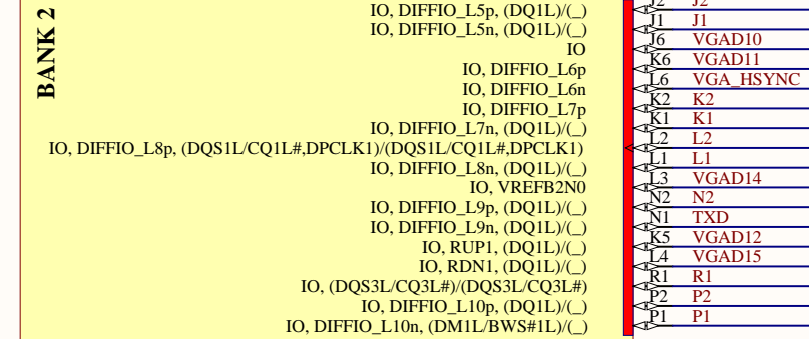


U3A



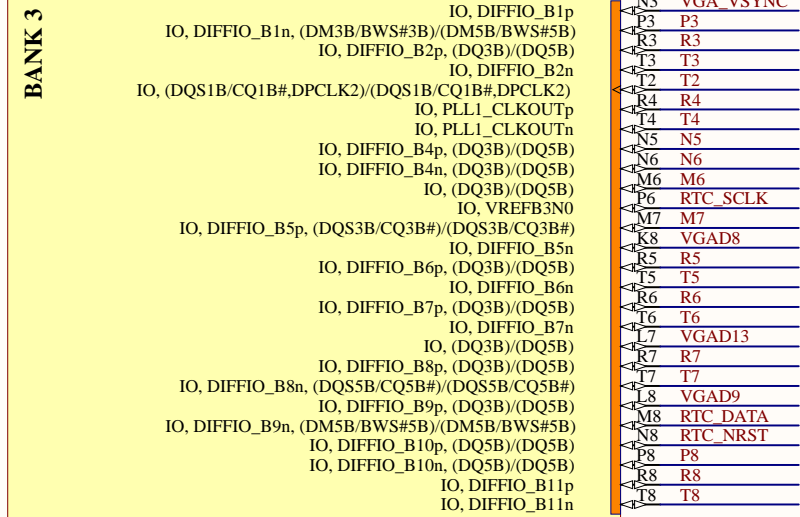
EP4CE6F17C8

U3B



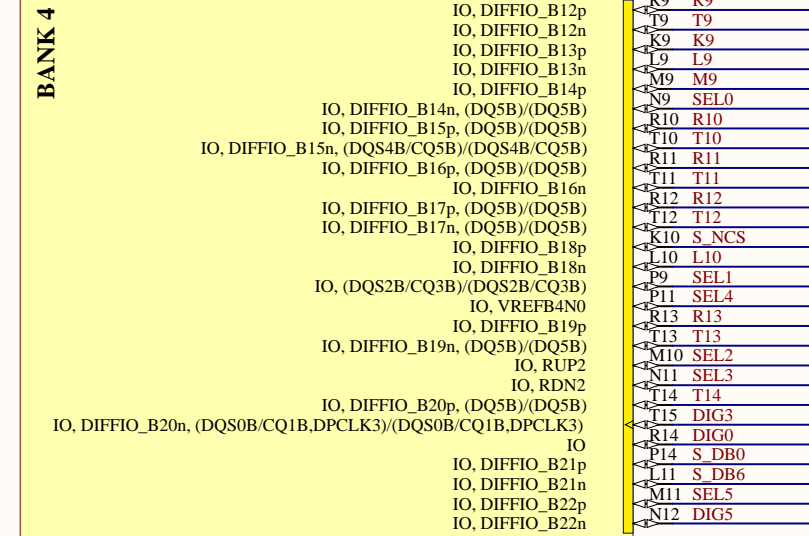
EP4CE6F17C8

U3C



EP4CE6F17C8

U3D



EP4CE6F17C8



U3E

BANK 5

IO	N13	RESET
IO	M12	S_DB1
IO	L12	S_DB3
IO	K12	S_DB7
IO, RUP3, (DM1R/BWS#1R)/(	N14	S_DB2
IO, RDN3, (DQ1R)/(	P15	DIG4
IO, DIFFIO_R11n, (DQS3R/CQ3R#)/(DQS3R/CQ3R#)	P16	DIG2
IO, DIFFIO_R11p, (DQ1R)/(	R16	DIG7
IO	K11	S_NRAS
IO, DIFFIO_R10n, (DQ1R)/(	N16	DIG1
IO, DIFFIO_R10p, (DQ1R)/(	N15	DIG6
IO, VREFB5N0	L14	S_DB5
IO, (DQ1R)/(	L13	S_DB4
IO, DIFFIO_R9n, (DQ1R)/(	L16	S_DB14
IO, DIFFIO_R9p	L15	S_DB15
IO	J11	S_DB9
IO, DIFFIO_R8n, (DQ1R)/(	K16	S_DB12
IO, DIFFIO_R8p, (DQS1R/CQ1R#,DPCLK4)/(DQS1R/CQ1R#,DPCLK4)	K15	S_DB13
IO, DIFFIO_R7n, (DEV_OE)	J16	S_DB10
IO, DIFFIO_R7p, (DEV_CLRn)	J15	S_DB11
IO, DIFFIO_R6n, (DQ1R)/(	J14	S_DQM0
IO, DIFFIO_R6p	J12	S_NCAS
IO, (DQ1R)/(	J13	S_NWE

EP4CE6F17C8

U3F

BANK 6

IO, DIFFIO_R4n, (INIT_DONE)	G16	S_DB8
IO, DIFFIO_R4p, (CRC_ERROR)	G15	S_DQM1
IO	F13	S_BA1
IO, DIFFIO_R3n, (nCEO)	F16	S_CKE
IO, DIFFIO_R3p, (CLKUSR)	F15	S_A12
IO, (DQS0R/CQ1R,DPCLK5)/(DQS0R/CQ1R,DPCLK5)	B16	S_A6
IO, VREFB6N0	F14	S_A10
IO, DIFFIO_R2n	D16	S_A11
IO, DIFFIO_R2p	D15	S_A9
IO	G11	S_BA0
IO, DIFFIO_R1n, (DQS2R/CQ3R)/(DQS2R/CQ3R)	C16	S_A8
IO, DIFFIO_R1p	C15	S_A7

EP4CE6F17C8

U3G

BANK 7

IO, DIFFIO_T21n	C14	S_A3
IO, DIFFIO_T21p, (DQ5T)/(DQ5T)	D14	S_A2
IO, DIFFIO_T20n	D11	SD_NCS
IO, DIFFIO_T20p, (DQS0T/CQ1T,DPCLK6)/(DQS0T/CQ1T,DPCLK6)	D12	SD_CLK
IO, DIFFIO_T19n	A13	A13
IO, DIFFIO_T19p, (DQ5T)/(DQ5T)	B13	B13
IO, PLL2_CLKOUTn	A14	S_A4
IO, PLL2_CLKOUTp	B14	S_CLK
IO, RUP4	E11	S_A1
IO, RDN4	E10	LED0
IO, DIFFIO_T18n, (DQ5T)/(DQ5T)	A12	A12
IO, DIFFIO_T18p, (DQ5T)/(DQ5T)	B12	B12
IO, DIFFIO_T17n, (DQ5T)/(DQ5T)	A11	A11
IO, DIFFIO_T17p, (DQ5T)/(DQ5T)	B11	B11
IO, VREFB7N0	C11	BUZZER
IO, DIFFIO_T16n	F10	SD_DIN
IO, DIFFIO_T16p, (DQS2T/CQ3T)/(DQS2T/CQ3T)	F9	LED1
IO, DIFFIO_T15n	F11	S_A0
IO, DIFFIO_T15p	A15	S_A5
IO, DIFFIO_T14n, (DQ5T)/(DQ5T)	A10	A10
IO, DIFFIO_T14p, (DQ5T)/(DQ5T)	B10	B10
IO, DIFFIO_T13n, (DQ5T)/(DQ5T)	C9	LED2
IO, DIFFIO_T13p, (DM5T/BWS#5T)/(DM5T/BWS#5T)	D9	LED3
IO, (DQS4T/CQ5T)/(DQS4T/CQ5T)	E9	E9
IO, DIFFIO_T12n	A9	A9
IO, DIFFIO_T12p	B9	B9

EP4CE6F17C8

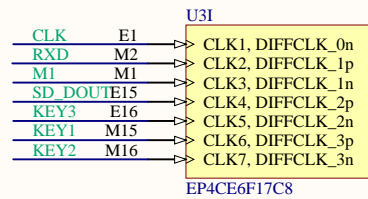
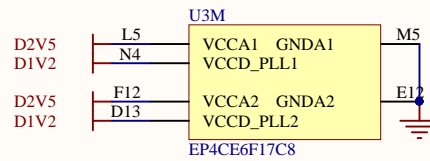
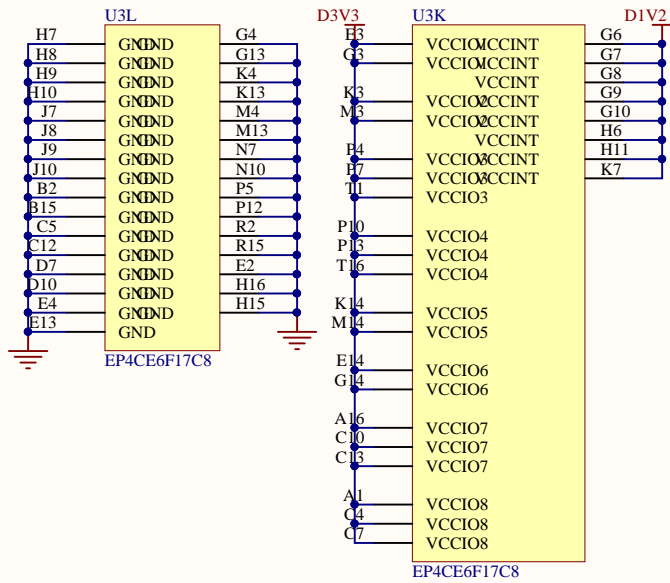
U3H

BANK 8

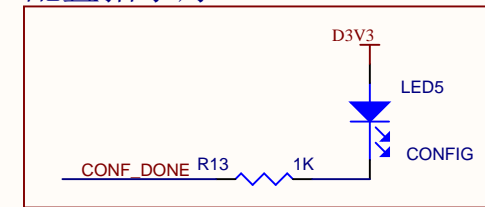
IO, DIFFIO_T11n	A8	A8
IO, DIFFIO_T11p	B8	B8
IO, (DQS5T/CQ5T#)/(DQS5T/CQ5T#)	C8	C8
IO, (DQ3T)/(DQ5T)	D8	D8
IO, DIFFIO_T10n, (DATA2), (DQ3T)/(DQ5T)	E8	E8
IO, DIFFIO_T10p, (DATA3)	F8	F8
IO, DIFFIO_T9n, (DQ3T)/(DQ5T)	A7	A7
IO, DIFFIO_T9p, (DATA4), (DQ3T)/(DQ5T)	B7	B7
IO, DIFFIO_T8n	F6	VGAD4
IO, DIFFIO_T8p	F7	VGAD7
IO, VREFB8N0	C6	C6
IO, (DQS3T/CQ3T#)/(DQS3T/CQ3T#)	A6	A6
IO, DIFFIO_T7p, (DQ3T)/(DQ5T)	B6	B6
IO, (DATA5), (DQ3T)/(DQ5T)	E7	E7
IO, (DATA6), (DQ3T)/(DQ5T)	E6	SDA_SEL6
IO, DIFFIO_T6n, (DATA7), (DQ3T)/(DQ5T)	A5	A5
IO, DIFFIO_T5n	A2	A2
IO, DIFFIO_T5p, (DQ3T)/(DQ5T)	B5	B5
IO, DIFFIO_T4n, (DM3T/BWS#3T)/(DM5T/BWS#5T)	A4	A4
IO, DIFFIO_T4p	B4	B4
IO, DIFFIO_T3n	D5	D5
IO, DIFFIO_T3p	D6	D6
IO, DIFFIO_T2n	A3	A3
IO, DIFFIO_T1n	B3	B3
IO, DIFFIO_T1p	C3	VGAD0
	D3	VGAD2

EP4CE6F17C8

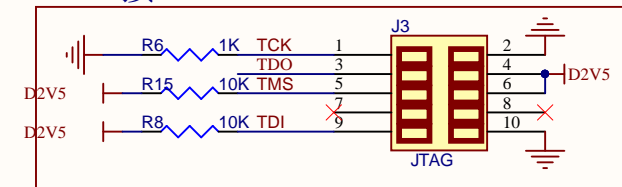




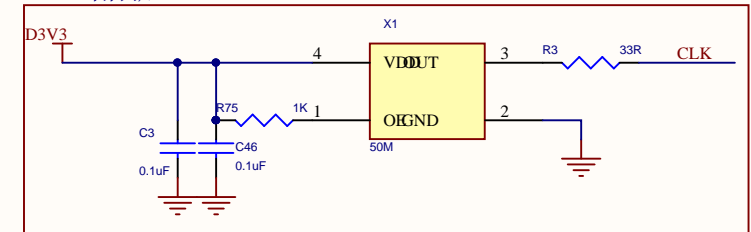
## 配置指示灯



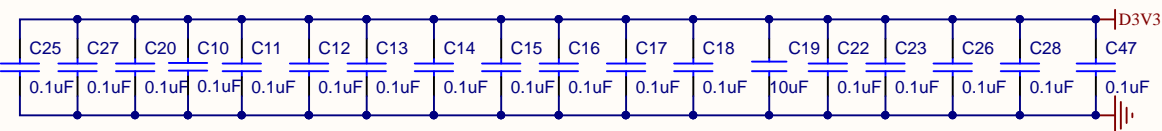
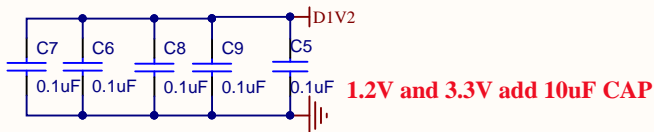
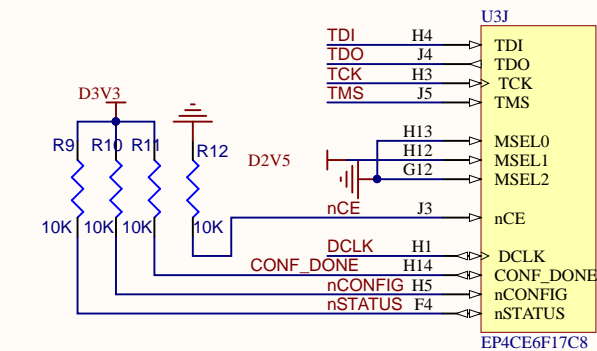
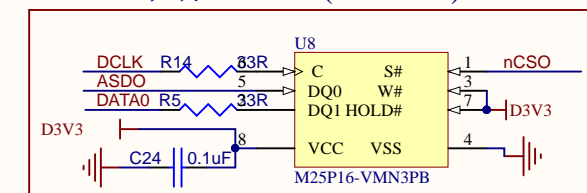
## JTAG接口



## 50M晶振

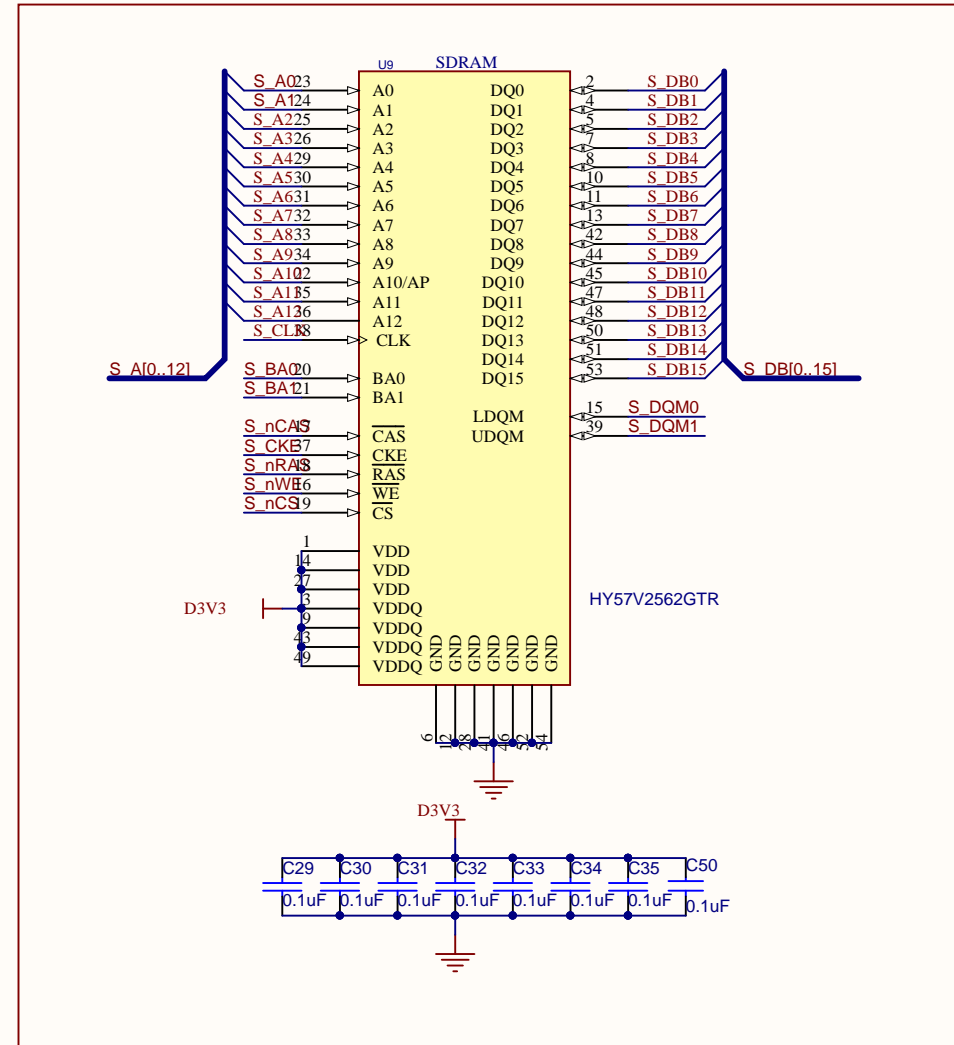


## 16Mbit串行FLASH(EPCS16)

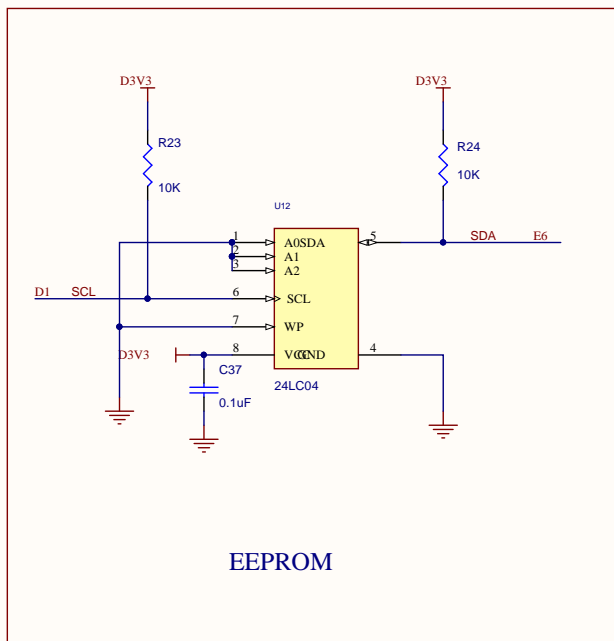




## 256Mbit SDRAM

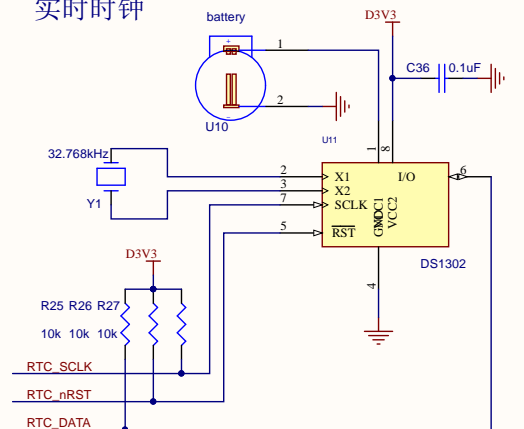




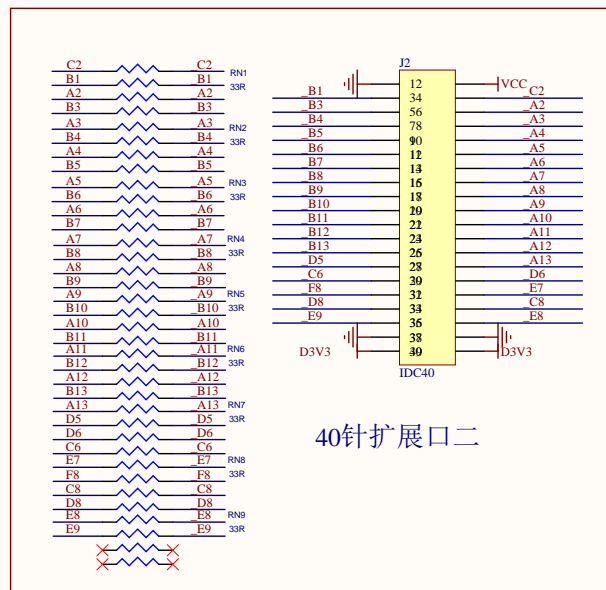
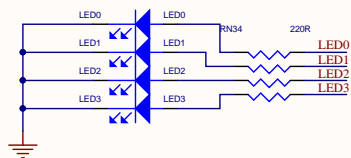


EEPROM

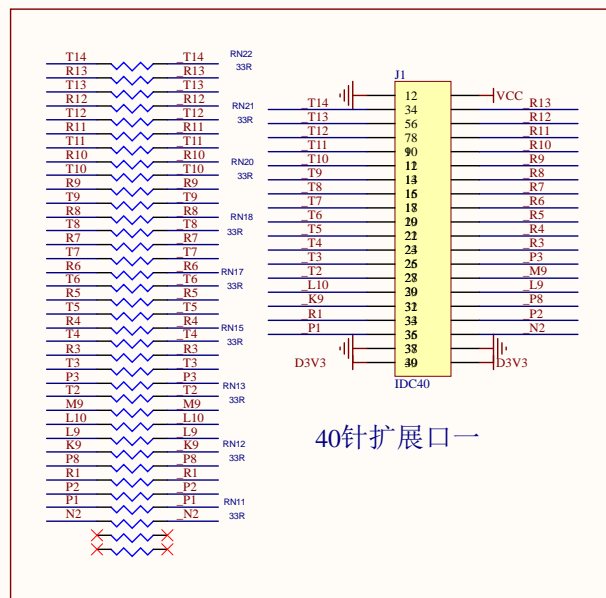
## 实时时钟



## 四个LED

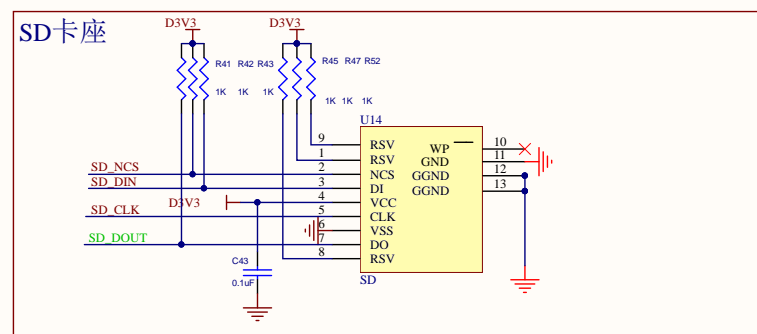
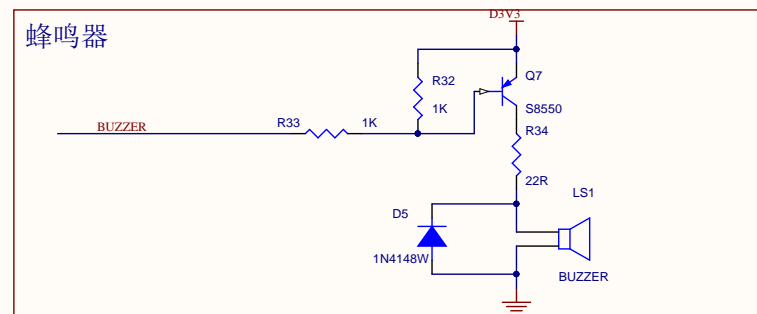
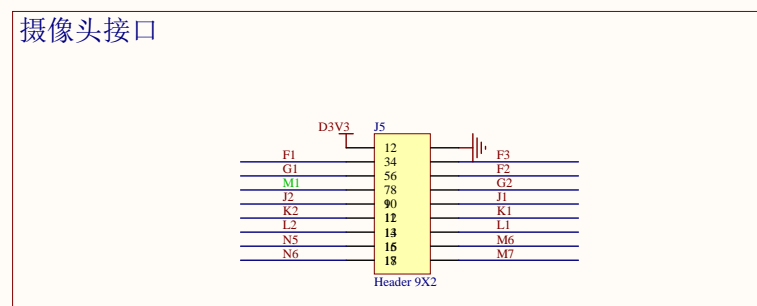
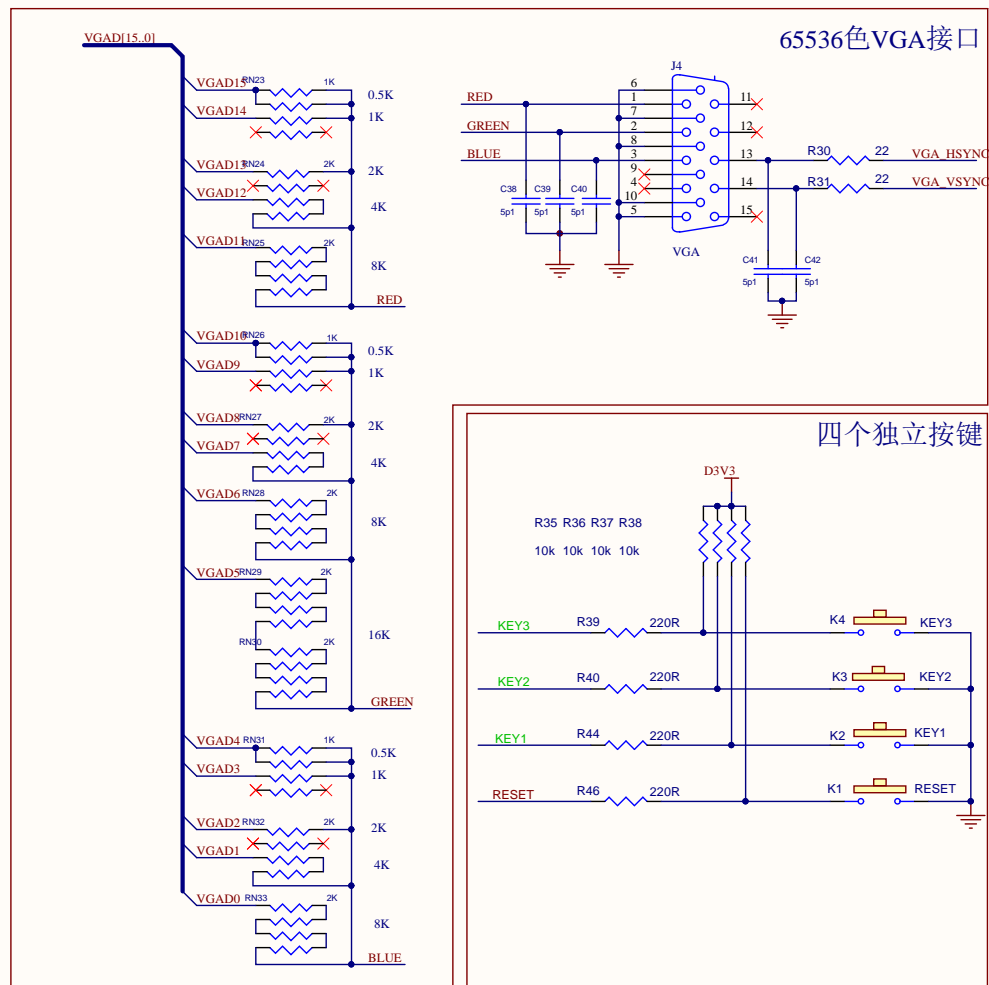


40针扩展口二



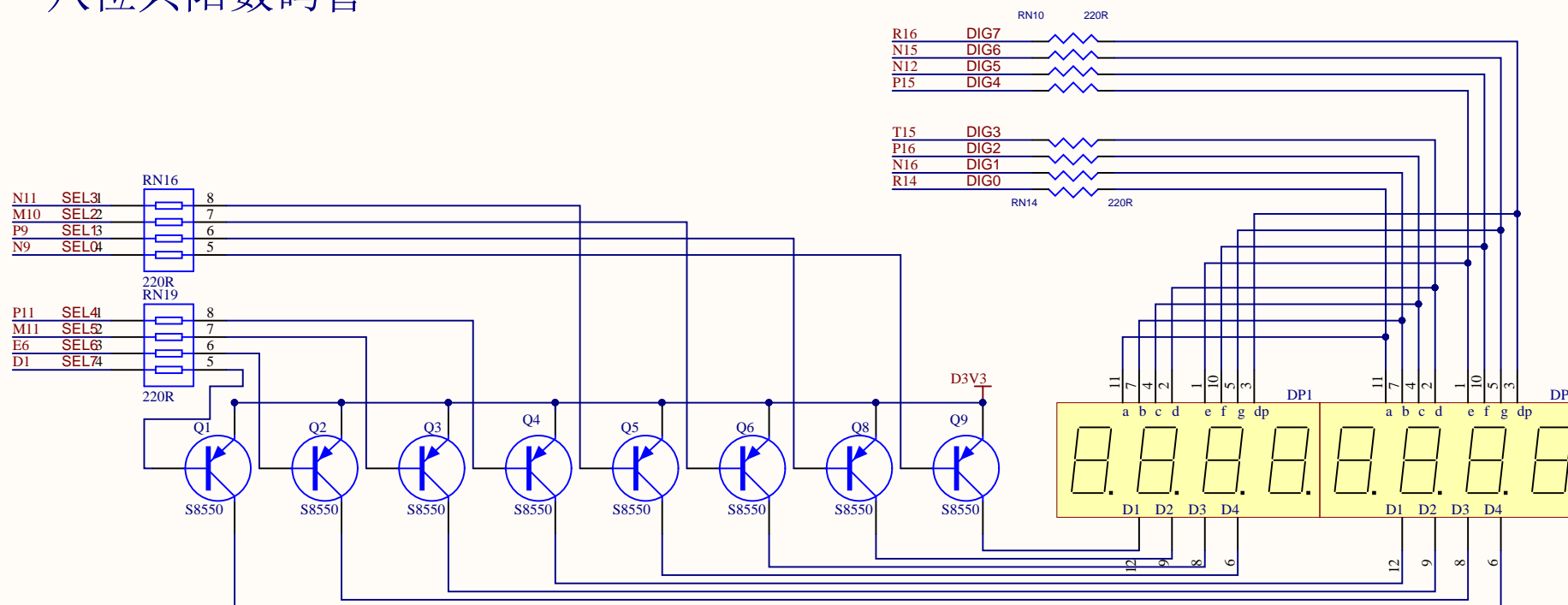
40针扩展口一



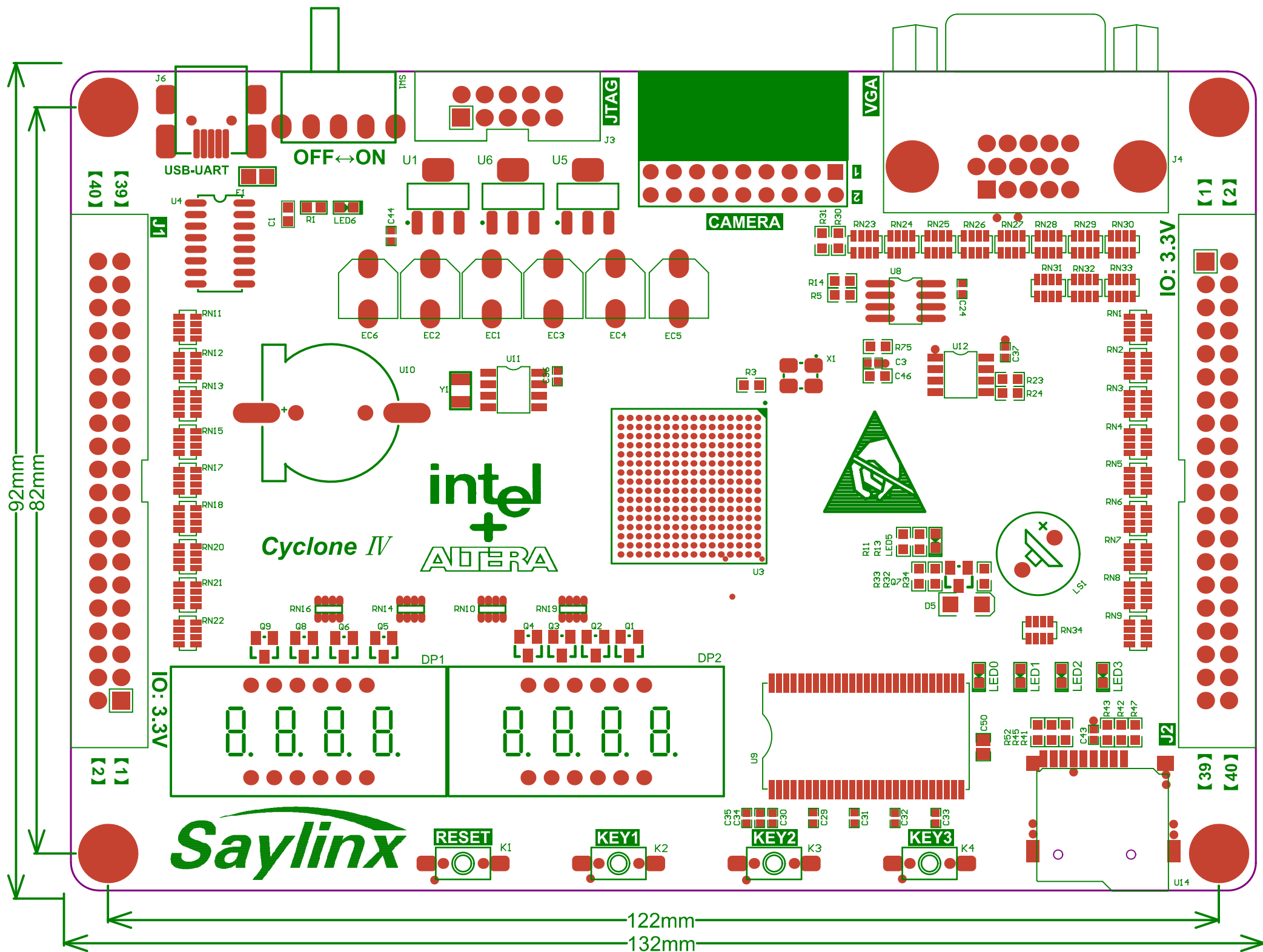




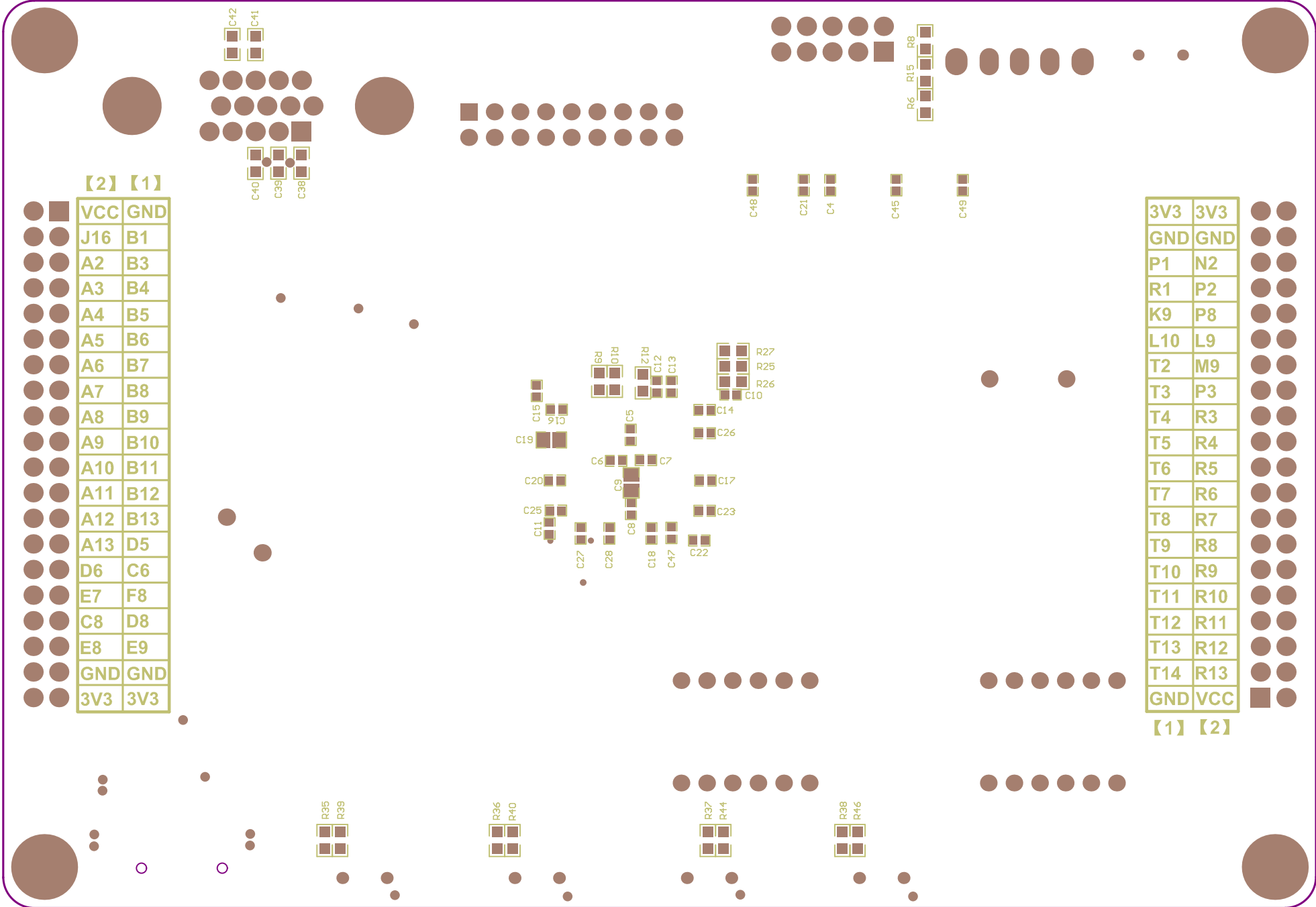
# 八位共阳数码管











【2】 【1】

VCC	GND
J16	B1
A2	B3
A3	B4
A4	B5
A5	B6
A6	B7
A7	B8
A8	B9
A9	B10
A10	B11
A11	B12
A12	B13
A13	D5
D6	C6
E7	F8
C8	D8
E8	E9
GND	GND
3V3	3V3

3V3	3V3
GND	GND
P1	N2
R1	P2
K9	P8
L10	L9
T2	M9
T3	P3
T4	R3
T5	R4
T6	R5
T7	R6
T8	R7
T9	R8
T10	R9
T11	R10
T12	R11
T13	R12
T14	R13
GND	VCC

【1】 【2】