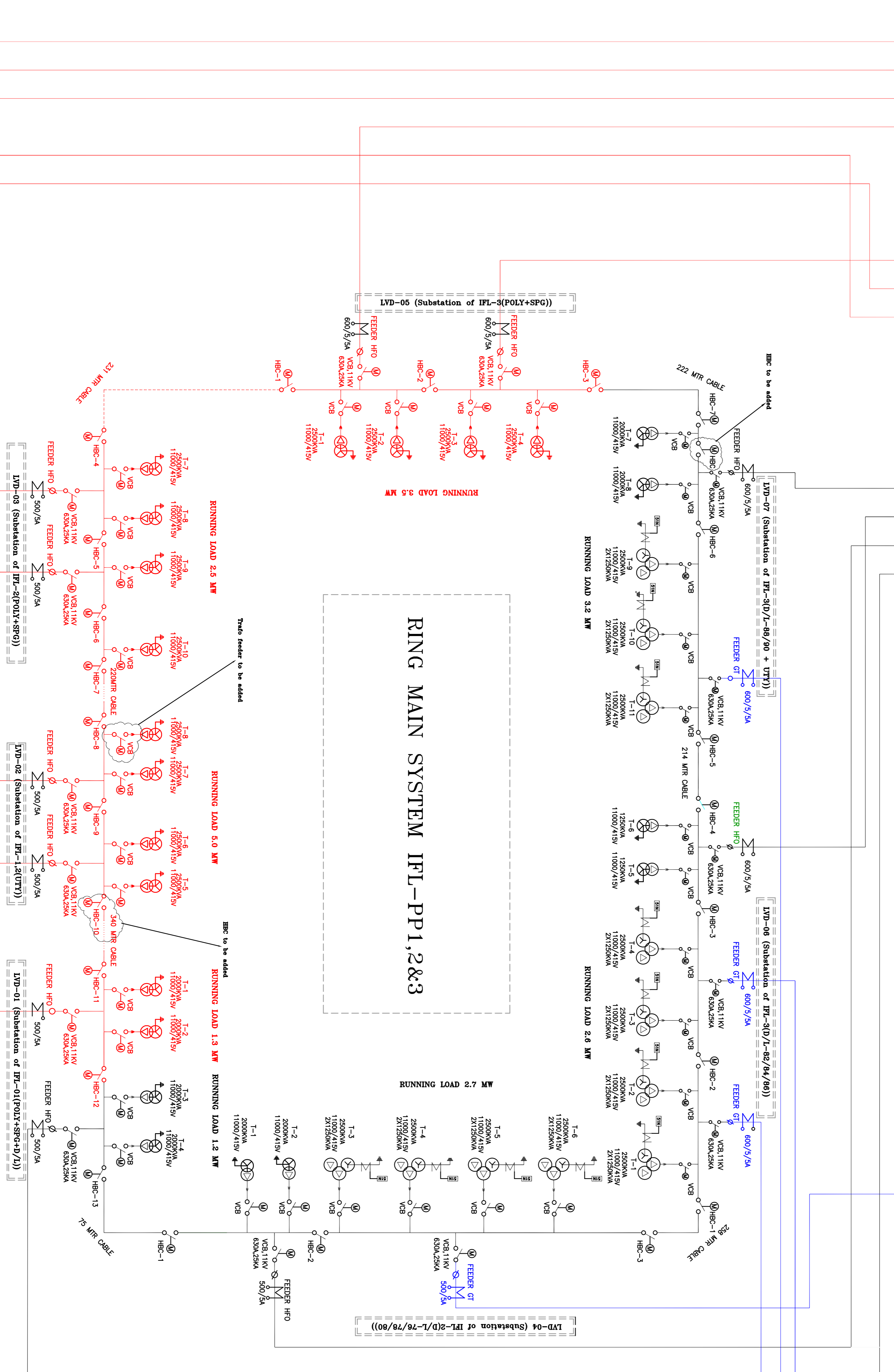
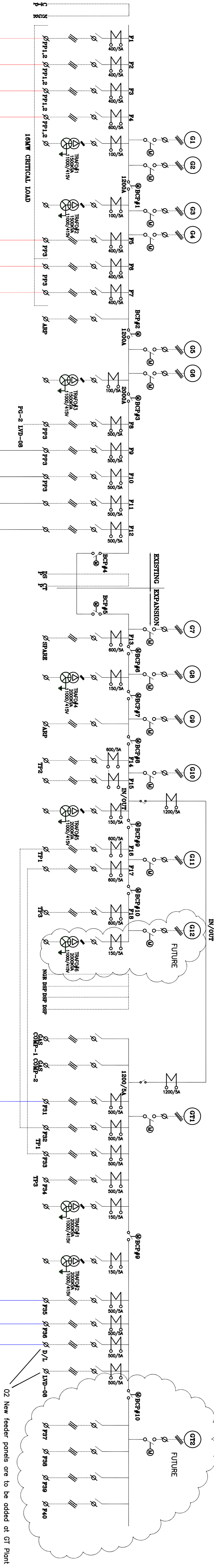


PG Phase 1 & 2

PG Phase 3

Gas Turbine



GENERATION CAPACITY		
HFO PLANT (11 Generets) GT/G PLANT (01 Generets)	46.2 MW (80% of total installed capacity) 11 MW (average available capacity)	
TOTAL	57.2 MW	

AREA	Operating Load (MW)	Critical Load (MW)	Less Critical Load (MW)
UTY IFL I/II	5.0	5	
IFL-I Poly & Sping	1.2	1.2	
IFL-I Draw Line	1.2		1.2
IFL-II Poly & Sping	3	3	
IFL-II Draw Line	2.7		2.7
IFL-III Draw Line & Sping	3.5	3.5	
IFL-III Draw Line & UTY (W. Treatment, St. Boiler, Abs.Chiller)	5.9		5.9
IFL-III Cooling Tower & PTA Big Bdg	2.5	2.5	
PG Aux. load	2.75	1.2	1.55
GT Aux. load	0.6		0.6
TOTAL	28.35	16.4	11.95

AREA	Operating Load (Less Critical)
Textile plant 1	6.5 MW
Textile plant 2	4.2 MW
Textile plant 3	3.4 MW

Total Critical Load (red color) of Polyester plant 1~3 16.4 MW
Total non critical Load (green color) of Polyester plant 1~3 11.95 MW
Total load TPs 14.1 MW
Total load of IFL-PP, TPs & Engine Auxiliaries 42.45 MW

NOTES

- XLPE cable feeders 07 No's to be connected from HFO Plant to IFL-PP critical load with 2.35MW load on each feeder.
- XLPE cable feeders 04 No's from GT Plant to be connected to IFL-PP non critical load with 3.0MW load on each feeder.
- XLPE cable feeder 04 No's to be connected to IFL-PP non critical load from HFO Plant. these feeders shall be used in case GT is out of operation.
- Total 04 overhead feeders shall be used for TP1 & TP2, 02 from PG phase3 and 02 from 5. XLPE cable feeders total 02 No's shall be used for TP3 Plant, 01 from PG phase 3 and 01 from GT Plant.
- 01 XLPE cable feeder shall be used for LV08 (in GT area) from HFO Plant PG phase 1&2.
- For the above mentioned configuration 02 new out going feeders are to be installed at GT Plant.

04/01-02-12	REVISION	PROJECT: IBRAHIM FIBRE LIMITED
REV DATE		Drawn by: Hassan Javed
TITLE: IFL 11KV DISTRIBUTION NETWORK	Checked by:	DATE: 01-01-12
	Approved by:	SHEET
		OWC. NO.: