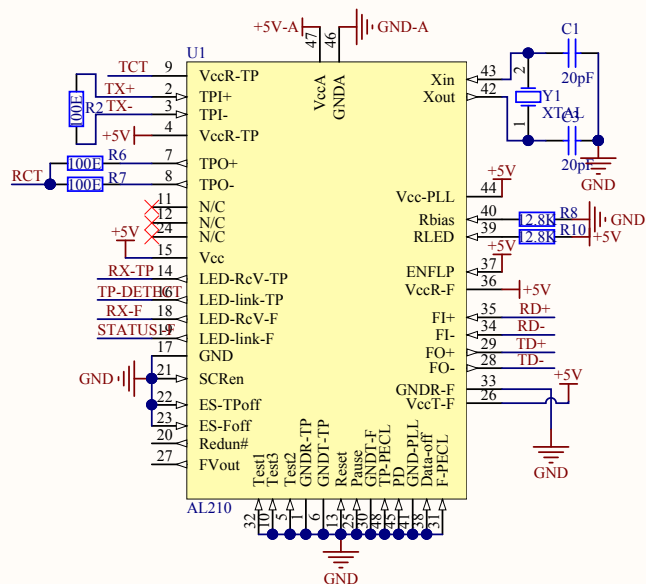
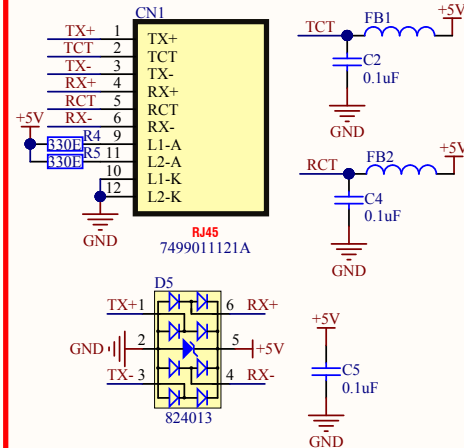


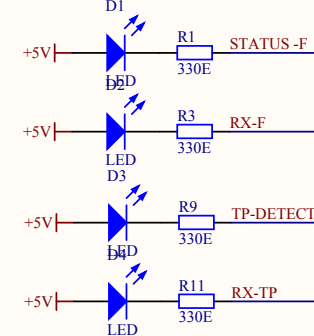
AL210



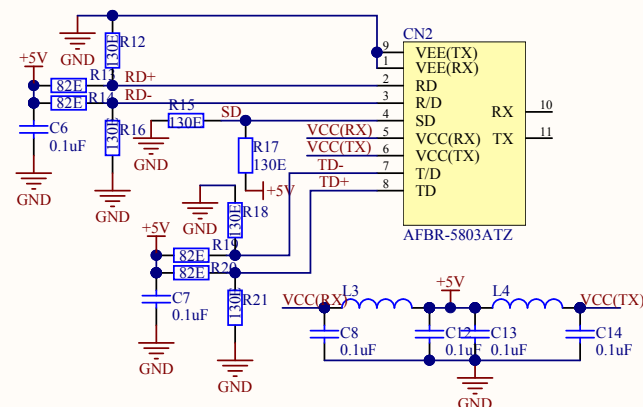
ETHERNET CONNECTOR



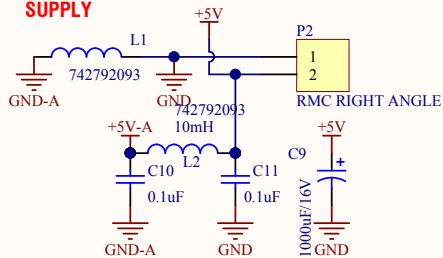
LED



ST FIBER OPTIC CONNECTOR



SUPPLY



Title		
Size	Number	Revision
A4		
Date:	9/8/2015	Sheet of
File:	D:\Projects\...\Ethernet to Fiber optic -SCH	By:

Comment	Description	Designator	Footprint	LibRef	Quantity
20pF	Capacitor	C1, C3	CAP-0805	Cap	2
0.1uF	Capacitor	C2, C4, C5, C6, C7, C8, C10, C11, C12, C13, C14	CAP-0805	Cap	11
1000uF/16V	Polarized Capacitor (Radial)	C9	100uF/63V	Cap Pol1	1
7499011121A	7499011121A-Ethernet connector	CN1	ethernet connector	RJ45 Connector	1
AFBR-5803ATZ		CN2	AFBR 5803ATZ	AFBR 5803ATZ	1
LED	Typical INFRARED GaAs LED	D1, D2, D3, D4	LED 5MM	LED0	4
824013	TVS Diode WE-TVS-HS, VRWM=5V	D5	SOT23_6L	WE-TVS-HS,SOT23- 6L,824001	1
	Inductor	FB1, FB2, L3, L4	L0805	Inductor	4
742792093	742792093	L1, L2	L0805	Inductor	2
RMC RIGHT ANGLE	Header, 2-Pin	P2	RMC2	Header 2	1
330E	Resistor	R1, R3, R4, R5, R9, R11	R-0805	Res2	6
100E	Resistor	R2, R6, R7	R-0805	Res2	3
12.8K	Resistor	R8, R10	R-0805	Res2	2
130E	Resistor	R12, R15, R16, R17, R18, R21	R-0805	Res2	6
82E	Resistor	R13, R14, R19, R20	R-0805	Res2	4
AL210	Fast Ethernet Fiber to TP Media Converter	U1	LQFP-48Pin (0.5mm &,0.22*2*1.4)	AL210(TQFP)	1
XTAL	Crystal Oscillator	Y1	R38	XTAL	1