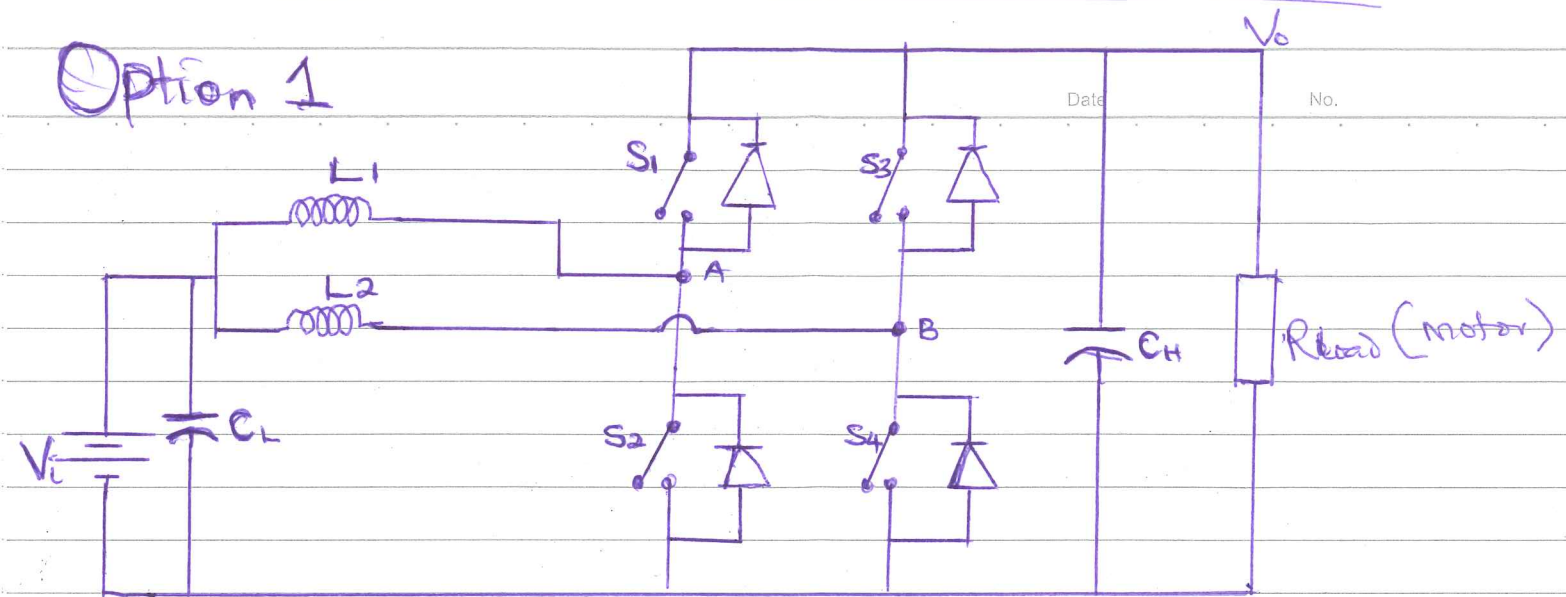


# Interleaved dc-dc Bidirectional Converter

## Option 1



### Key

$S_1 - S_4$  — MOSFET SWITCH

$L_1$  &  $L_2$  — Coupled Inductor, assume equal

$A$  &  $B$  — Phase A & B  
180° phase diff.

### Design Specifications

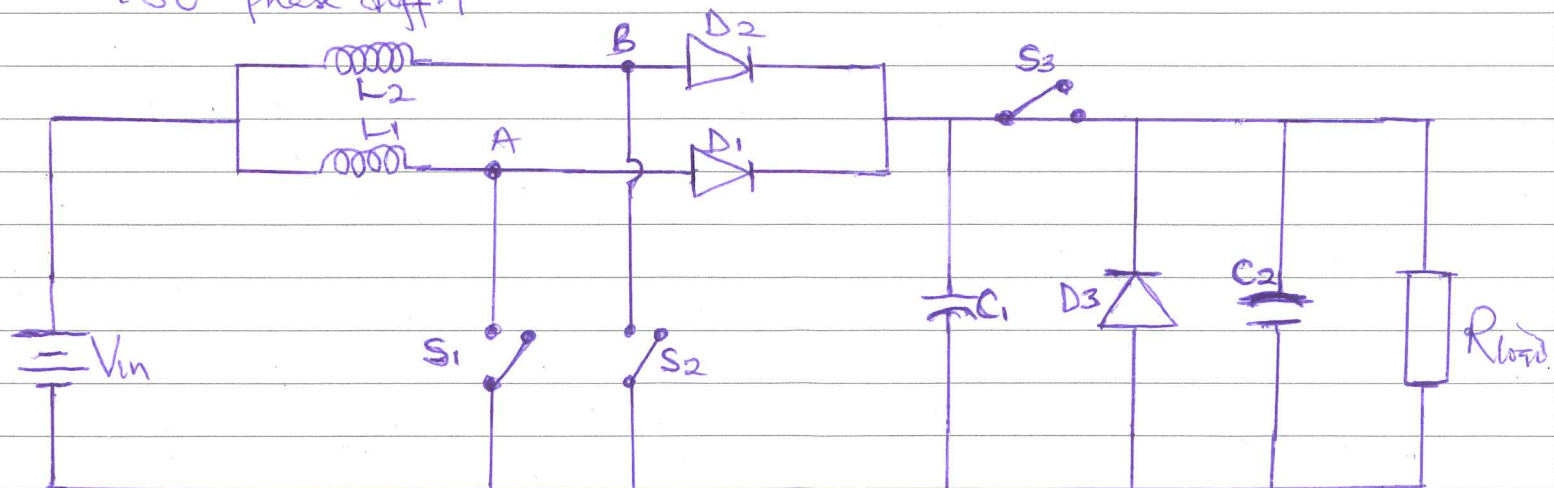
(1) Input Voltage — 48V

(2) Output Voltage — 96V

(3) Output current (Current sharing) — 100A

Propose Switch (MOSFET) — IRFB4710PBF

GATE DRIVER — IR2101(S)



## Interleaved buck-boost Converter

## Option 2