

4

3

2

1

PART NUMBER	FINISH
6-15090-8	
6-15090-8MM	
6-15090-8TT	
6-15090-8CC	

REV	REVISION RECORD	ECN	BY	APVD	DATE
A	PER ECN NO. 13035	13035	MAC	NC	02/24/95
B	REVISED & REDRAWN PER EWR 104595	504011	BILL	PB	07/27/05

NOTES: UNLESS OTHERWISE SPECIFIED

1. INTERPERT DRAWING IN ACCORDANCE WITH ASME Y-14.5M 1994.

PART TO BE SUPPLIED ON A CONTINUOUS REEL AS SHOWN IN WINDING INSTRUCTIONS.

3. MATERIAL: C26000 BRASS, 1/2 HARD.

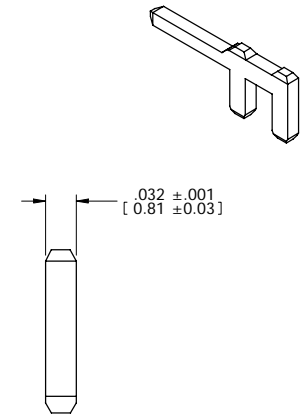
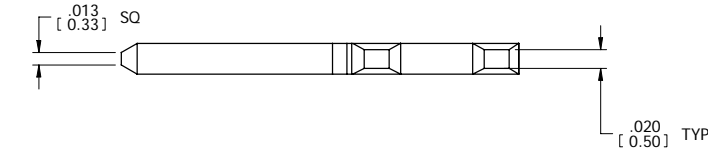
FINISH: POST-PLATED ".000100" [2.54] MICRONS MIN 90/10 TIN/LEAD OVER .0000500" [1.27] MICRONS NICKEL.

FINISH: POST-PLATED "TT" = ".000160" [4.06] MICRONS MIN MATTE TIN (LEAD FREE) OVER .000080"[2.03] MICRONS MIN NICKEL.

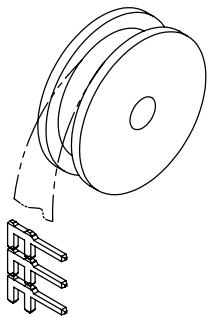
FINISH: POST-PLATED "MM" = ".000300" [7.62] MICRONS MIN MATTE TIN (LEAD FREE) OVER .000100"[2.54] MICRONS MIN NICKEL.

FINISH: POST-PLATED "CC" = ".000010" [0.254] MICRONS MIN Au OVER .000050" [1.27] MICRONS NICKEL.

8. QUANTITY OF PARTS PER REEL TO BE 15,000-50,000 PIECES.



WINDING INSTRUCTIONS



**CUSTOMER DRAWING**

TOLERANCES UNLESS OTHERWISE SPECIFIED DIMENSIONS IN INCHES		autosplice®		Autosplice, Inc. 10121 Barnes Canyon Rd. San Diego, CA 92121-2725 858.535.0077	
DECIMAL: .XX = ± .01 [X.X] = ± [0.3] XXX = ± .005 [X.XX] = ± [0.13]	THIRD ANGLE PROJECTION	DESIGNED BY	MAC M.	ENGINEERED BY	N.C.
ANGULAR: ± 5°		DATE	2-14-95	DATE	2-14-95
TITLE: F-CONNECTOR					
SIZE	ECN NO.	REVISION NUMBER	REVISION		
C	OAE89	C6-15090-8	B		
SCALE	ECO NO.	MODEL NO.	SHEET 1 OF 1		

The drawing and the information set forth hereon are the property of Autosplice, Inc. and are to be held in trust and confidence. Publication, disclosure, or use for any purpose not expressly authorizing in writing by Autosplice, Inc. is prohibited.