



Bestech Circuits (HK) Limited

Your best PCB supplier

TEL: +86-0755-2918 5755 FAX: +86-0755-8625 1678

Email: sales@bestechcircuits.com

About Bestech

- Founded in 2000, Bestech is committed to providing high quality products to our valued clients.
- Products: bestech's products are extensively used in communications, industrial control, telecommunication, consumptive electronics, power supply and research institution.
- Mission: supply best PCBs & services to our worldwide clients;
Minimize the cost and product cycle of customer
Become the largest and most reliable outsourcing company in Asia
- Advantage: Significant Cost Savings No Compromise on Quality
Quickly Response & Proactive Service Increased competitiveness



BESTECH
Your best PCBs supplier

Our organization



Factory Area (1)



Lamination Machine



Exposure Workshop



Work hall



Workshop hallway



Lamination



Solder Mask

Factory Area (2)



Orbotech AOI system



Electrical Tester (HV)



Chemistry analysis



Copper pull tester



Flying probe test



Soldermask thickness measure

Factory Area (3)



Electro-copper plating



NC drilling Machine



CNC V-CUT Machine



NC-Routing Machine



Lead-free HAL Workshop



Chemical-copper line

Why Choose Bestech (1)

- 1. Competitive price with high quality;
- 2. Delivery on time;
- 3. Super good service and after service. We can reply to you in 1-4 hours after we received your email;
- 4. We don't have MOQ, don't have MOV;
- 5. Professional engineer work with you ;

Why Choose Bestech (2)

- 6. Not only save your cost, but also your time .
- 7. Native-English communication;
- 8. Access to our ERP system to track all online orders ;
- 9. Provide useful suggestion to our valued clients;
- 10. It's very easy to do business with us.

Our capability (1)

- Layers: 1-20 layers
- Material: Standard FR1, FR4, CEM1.
High performance material (Teflon (PTFE), Rogers series)
Metal-backed PCBs (alum board, cu based board)
High Temperature .
- Surface finish: HSAL, Lead free HASL, Gold plating, Gold-fingers,
immersion silver, OSP, Immersion gold, Immersion Tin,
Peelable mask, Carbon ink.
- Via type: Through holes
Blind/buried via

Capability (2)

- COMPANY IDENTIFICATION : **BESTECH CIRCUITS (HK) Co.,LTD**

- TECHNOLOGY

SingleLayer ■

DoubleLayer PTH ■

Multilayer ■

Press Fit ☐

Layers number: up to 20 layer

- IPC CLASS

Class 2 ■

Class 3 ☐

- PP MATERIAL(NanYa, ShengYi, KB)

1080,2116,2116P,7628,3313

- BASE MATERIAL(NanYa, ShengYi, KB,Rogers)

ROHS ■

Low CTE Z ☐

TG 135 ■

TG 150 ■

TG 170/ 180 ■

Min and Max Core thickness: 0.075mm-4.0mm

Min and Max Copper thickness: 18μm-105μm

Capability (3)



- DRILLING

Blind vias ☒

Buried vias ☒

Laser drilling ☐

Minimum drilling diameter: 0.13mm.....

Minimum and Max pcb thickness: 0.4-6mm.....

Internal and external annular ring (radius value):5mil

- ETCHING

Etching Class:

Minimum etching track/gap: 4mil/4mil.....

Min track width: 4mil.....

Min gap width: 4mil

- HOLE CU THICKNESS

Hole Copper thickness : 18-35Um, Min. 18Um

Minimum diameter: 0.13mm.

aspect ratio: 1:12

- SOLDER MASK (SOLDER RESIST)

Photosensitive ☒

Solder mask thickness: 1-30um

Color and trade: Green, Matt Green, Black, Matt black, Red, Blue, Yellow/ NANYA, TAYIO , OTC (TRADE)

Min width solder printing: 4mil

Min solder mask clearance: 2.5mil

Via plugging ☒

Via recovering ☐

Capability (4)

- SCREEN PRINTING

Color: White, Blue, Black, Red
Min line width marking: Line width 5mil, High 28mil

Trade: Sun

- FINISHING

ENIG ■

Min-Max Thickness Ni-gold: Ni 3-6um, Gold 0.025-0.08um

Electrolytic gold-finger ■

Min-Max Thickness Ni-Gold: Ni 3-6um, Gold 0.762um Max.

OSP ■

Min-Max Thickness: 0.25~0.5um

Hot Air Levelling: Tin Lead ■
Lead Free ■

Min-Max Thickness: 1-40 um

Immersion tin ■

Min-Max Thickness: 0.4-1Um

- SCORING & ROUTING

Punching ■

Routing ■

Scoring ■

General tolerances:

- ELECTRICAL TEST

Flying probe test ■

Fixture Test ■

Leading time

Aim of delivery performance is 98%

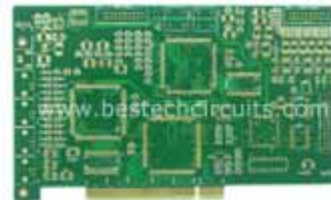
layers	Urgent DD for prototype	Standard DD for prototype	DD for volumes
1-2	2 days	5-8 days	10-16 days
4	5 days	7-12 days	12-20 days
6	6 days	10-15 days	13-23 days
8	9 days	16-23 days	16-28 days
10	12 days	15-24 days	20-35 days
12	15 days	18-26 days	19-35 days
14	16 days	24-30 days	31-40 days
16	18 days	24-32 days	32-45 days

Remark: 1. days means working days;
2. Can to be special discussed when needed.

Our products



Semiconductor board



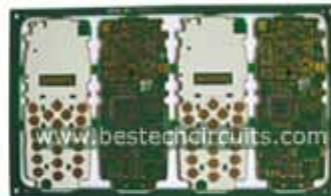
Gold Finger board



V-CUT board



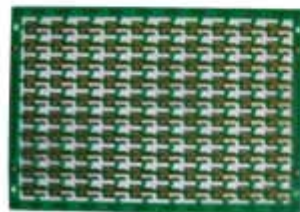
Optical communication board



Selected Surface



Heavy Copper board(4OZ)



Thin board



Filled VIAs with Epoxy



HDI(1+6+1)



Our customers (1)





Our customres (2)



ICAPE



**multi
circuits**

Quality Control (1)

- Consistent with UL and IPC requirement
- 100% Electrical Test
- 100% Visual Inspection (including warp & twist check)
- Dimensional Inspection (finished hole sizes, pcb profiles, etc)
- Microsection (Click for Sample)
- Solderability Test (245 ± 5 degrees, 3-5 seconds)
- Thermal Test (288 ± 5 degrees, 10 seconds)
- Tape Test (adhesion test)
- Peel Test (conductor peel strength)
- Impedance Test
- Ionic Contamination Test
- Others test required

Quality Control (2)



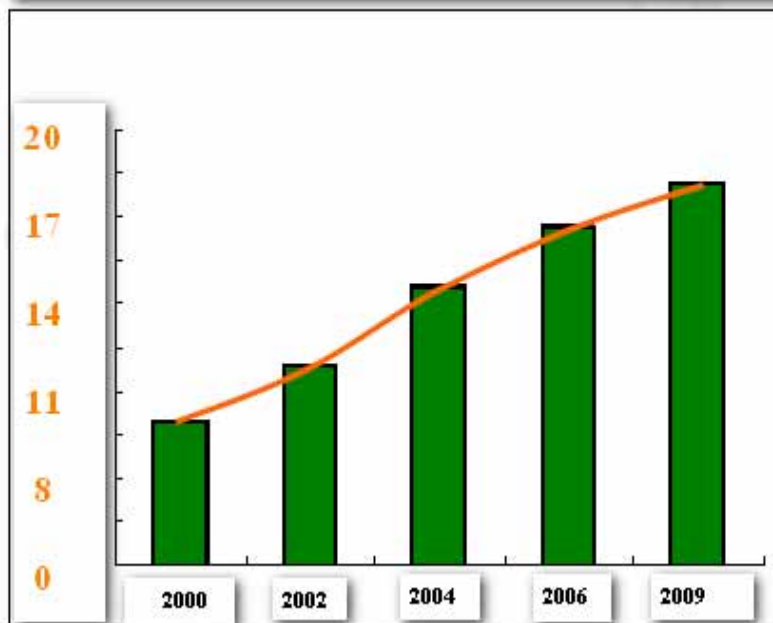
ISO9001:2000 Certificate



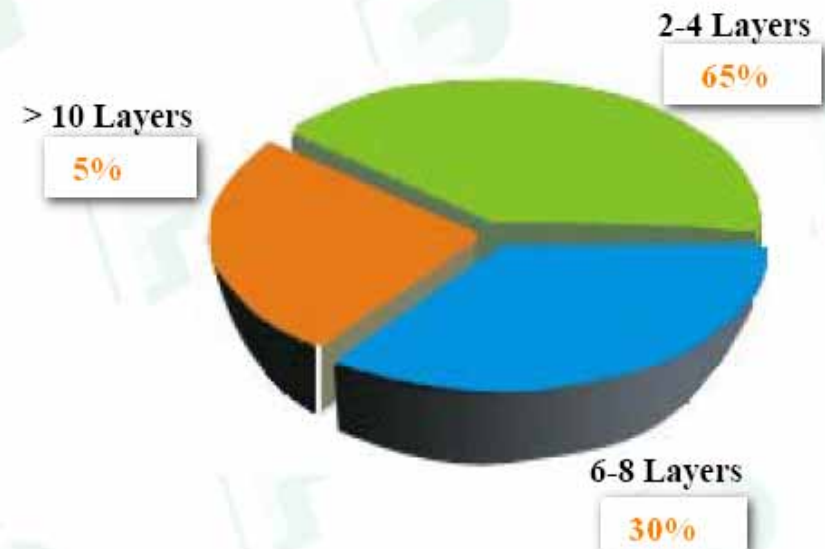
ISO14000 Registered

Sales Area

Tendency chart of sales Turn (Million USD)



Scale Map of Layers count (2009)



Sales area (2)

- **1. HongKong Office**

Tel:(852) 2187 3989

Fax:(852) 2187 3986

Add: Unit D, 16/F, Cheuk Nang Plaza 250 Hennessy Road, WanChai HongKong

- **2. ShenZhen Office**

Tel:(86755) 2918 5755

Fax:(86755) 8625 1678

Add: 1819,Building A1, Honglong Plaza, XiXiang BaoAn Dist.
Shenzhen,China.

- **3. JiangXi Office**

Tel:(86793) 5337 997

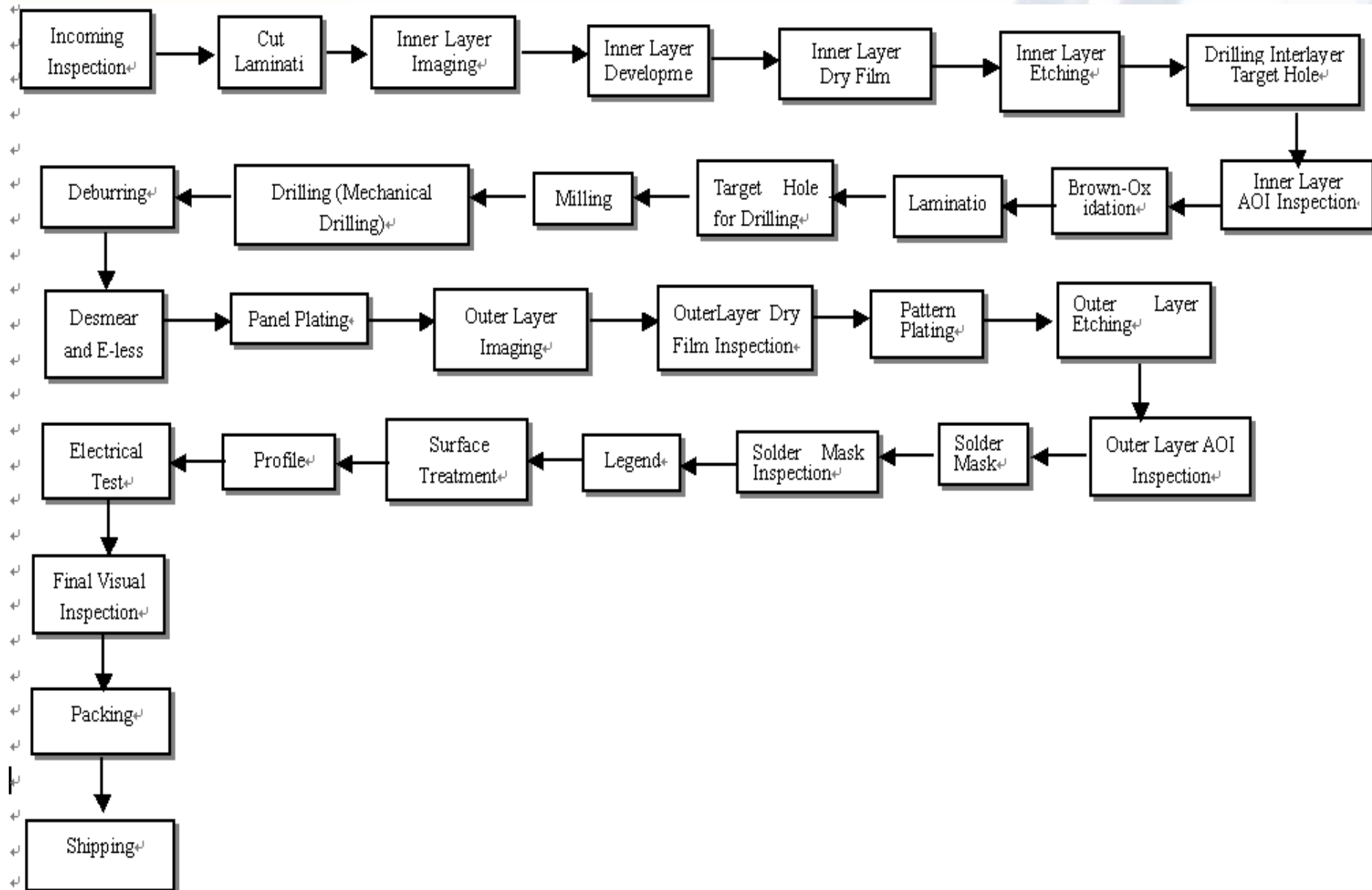
Fax:(86793) 5334 026

QUALITY Industrial Park, qianshan County, Jiangxi Provence, 343700, CHINA.



BESTECH
Your best PCBs supplier

Product Flow chart



Contact us

- Company Address:
Unit D, 16/F, Cheuk Nang Plaza 250 Hennessy Road, WanChai HongKong.
- Factory Address:
Building 4 jinfeng Industrial park, heping village , fuyong town, Baoan District, Shenzhen, P.R.China
- Mail: Sales@bestechcircuit.com
- Tel: +86-755-29185755
- Fax: +86-755-86251678
- Web site: www.bestechcircuits.com



BESTECH
Your best PCBs supplier

The End

Thank You!