

8



APEK DESIGN & DEVELOPMENTS LTD

MPE TRANSDUCER DIVISION

CALIBRATION REPORT

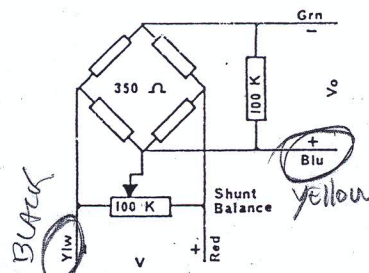
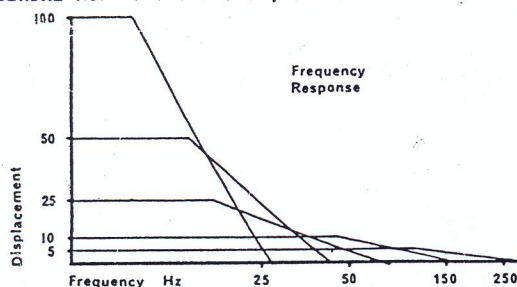
TRANSDUCER TYPE . *HLS.10.B* .

INPUT RED/YELLOW

DATE *2-4-97*

SERIAL NO. . *11642* .

OUTPUT BLUE/GREEN



ATENÇÃO!
ADAPTAÇÃO
YLW → BLACK.
BLUE → YLW

EXCITATION VOLTS: AC OR DC
1,5 - 10 CONSTANT
25 max: pulsed

BRIDGE 350 ohms NOMINAL
SHUNT 100k ohms NOMINAL

CALIBRATION DATA:

GAUGE FACTOR SET 2.0

TEST VOLTS 5.21 VDC

TEMPERATURE 20°C

FS SPINDLE DISPLACEMENT . *11.0* . MM.

NON LINEARITY . *0.05* . +/- % FS

STRAIN SENSITIVITY . *9.09* . $\times 10^{-6}$ /MM.

VOLTS SENSITIVITY . *5.0* . mV/V

OPERATING NOTES:

CLEAN OPERATING SPINDLE WITH RESIDUE-FREE SOLVENT/INHIBITOR TYPE CLEANER
111-TRICHLOROETHANE OR SIMILAR.

FOR REPETITIVE CYCLIC OPERATION LIGHTLY LUBRICATE ONLY WITH GENERAL PURPOSE SYNTHETIC
INSTRUMENT OIL WINDSOR L 245X (MIL-L-6985A) OR EQUIVALENT, DO NOT OVER LUBRICATE.

USE SOFT JAW CLAMPS TO GRIP SPINDLE WHEN CHANGING ANVIL.

(NOTE - When Anvil is removed over travel of spindle could cause damage to internal mechanism).

CLAMP TRANSDUCER ON BODY DIAMETER ONLY.

M.P.E. MOUNTING CLAMP MC-150 OR MC-200 STRONGLY RECOMMENDED.

6 Haviland Road, Ferndown Industrial Estate,
Wimborne, Dorset. BH21 7RF.
TEL: 0202 876149 FAX: 0202 861210
TELEX: 8950511 ONEONE Quote Mailbox 13864001